



Broughton Road, London, SW6 2LB

Cow & Co
LONDON



Guide price of £675,000 - £775,000. This two bedroom, two bathroom upper floor maisonette is accessed through its own front door of a handsome Victorian property. The property has a light filled, large and spacious eat in living room. There is a separate kitchen and plenty of storage space.

Broughton Road is situated in Sands End, it is well placed to take advantage of the local shops, restaurants, bars and cafes on the Wandsworth Bridge Road, as well as regular bus links. Imperial Wharf Overground Station is 0.6 miles away and Parsons Green is 0.8 miles from the property. It is also conveniently located 0.4 miles away from the Thames Riverside and the Harbour Club. Please note these distances are approximates. The area is also well served by Fulham Broadway tube station which is approximately 0.8 miles away.

The area has an excellent selection of schools including Kensington Prep, Thomas's Fulham Marie D'Orliac and Lady Margaret's.

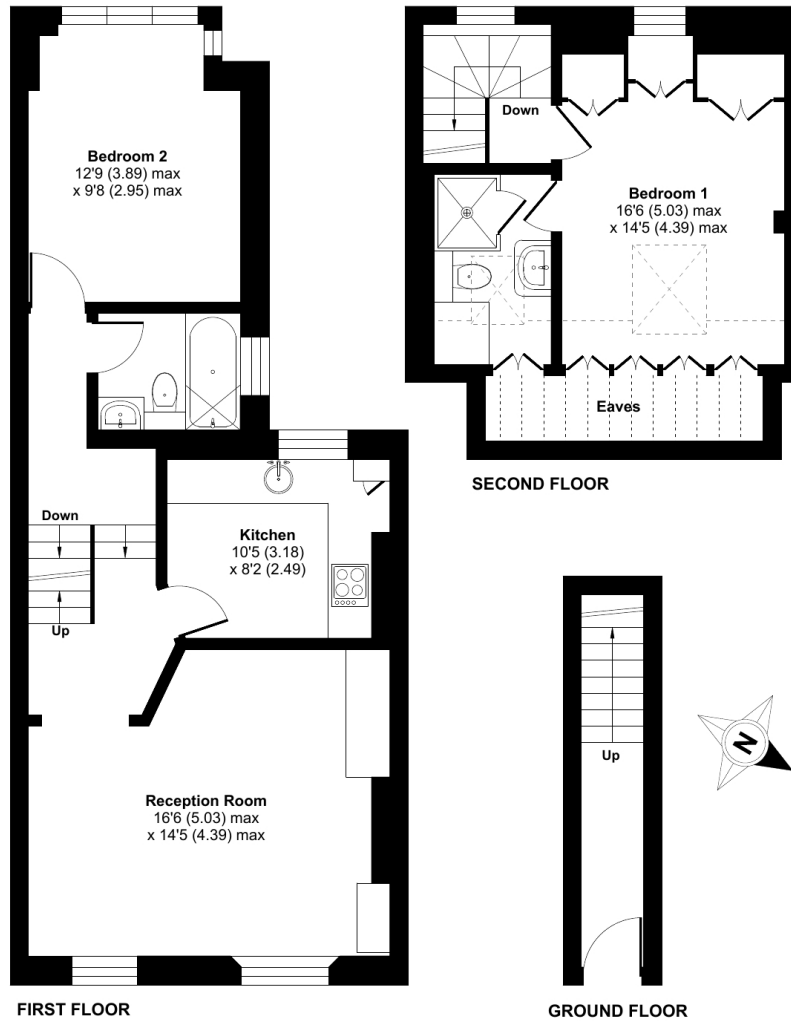


- Two bedrooms
- Two bathrooms (one en-suite)
- Private entrance
- Light and airy accommodation throughout
- Period conversion
- Superb location on a quiet tree lined street
- Excellent amenities and transport links nearby
- Share of Freehold

Broughton Road, London, SW6

Approximate Area = 825 sq ft / 76.6 sq m
Limited Use Area(s) = 76 sq ft / 7 sq m
Total = 901 sq ft / 83.7 sq m
For identification only - Not to scale

Denotes restricted head height



Floor plan produced in accordance with RICS Property Measurement Standards incorporating International Property Measurement Standards (IPMS2 Residential). © nchecon 2024. Produced for Cow & Co Properties Ltd. REF: 1106101

Tel: 0208 065 0010
Email: thehub@cowandco-london.com
Web: cowandco-london.com

Agents note: All measurements are approximate and whilst every attempt has been made to ensure accuracy they are for general guidance only and must not be relied on. The fixture and fittings referred to have not been tested and therefore no guarantee can be given that they are in working order. Internal photographs are reproduced for general information and it must not be inferred that any item shown is included with the property.

Cow & Co
LONDON