



11 Hillbrow, Letchworth Garden City, Hertfordshire. SG6 3RA





4 Bedroom Semi-Detached House

£475,000 Leasehold

This charming four-bedroom, semi-detached property within easy reach of Letchworth town centre and mainline station offers a fantastic living space with modern features throughout. The property is complemented by a driveway providing off-street parking for two cars and a beautifully landscaped, enclosed rear garden, perfect for outdoor relaxation and entertainment.

- FOUR bedrooms
- Semi-detached
- Driveway
- Landscaped rear garden
- Close to town, mainline station and schools
- Separate cloakroom
- Two reception rooms
- Modern and spacious
- Loft extension
- EPC rating D. Council tax band C

Ground Floor:**Entrance Hall:**

Laminate flooring. Stairs to first floor. Internal doors to living room and dining room.

Living Room:

Abt. 15' 8" x 11' 1" max (4.78m x 3.38m max) Laminate flooring. Radiator. Double glazed window to front aspect with wooden shutter blinds. Double glazed French doors to garden/patio area. Fire place with mantle and surround with electric fire.

Dining Room:

Abt. 10' 8" x 9' 9" (3.25m x 2.97m) Laminate flooring. Radiator. Double glazed windows to front and side aspect with wooden shutter blinds. Archway leading through to kitchen.

Kitchen:

Abt. 9' 1" x 9' 9" (2.77m x 2.97m) Lino flooring. Spot lights. Double glazed window to garden aspect. Worktops with a range of wall and base mounted units and integrated gas hob, oven, extractor, sink & drainer and boiler. Tiled splashback. Space for plumbed appliances and fridge/freezer.

Internal Hall:

Lino flooring. Under stairs storage. Upvc door to rear garden.

Cloakroom:

Lino flooring. Radiator. Double glazed privacy window to rear aspect. WC. Wash basin.

First Floor:**Bedroom One:**

Abt. 14' 5" x 9' 9" (4.39m x 2.97m) Carpet. Radiator. Double glazed window to front aspect.

Bedroom Three:

Abt. 7' 5" x 8' 4" (2.26m x 2.54m) Carpet. Double glazed window to rear aspect. Radiator

Bedroom Four:

Abt. 8' 4" x 8' 2" (2.54m x 2.49m) Carpet. Double glazed window to front aspect. Radiator.

Bathroom:

Laminate flooring. Two double glazed privacy windows to front aspect. Radiator. Bath with mixer taps and wall mounted shower and tiled walls. Wash basin with tiled splashback. WC.

Second Floor:**Bedroom Two:**

Abt. 7' 7" x 18' 6" (2.31m x 5.64m) Carpet. Radiator. Spotlights. Split staircase to sleeping area and dressing area. 2x Velux windows. Eaves storage across both sides.

Outside:**Front Garden:**

Block paved driveway for two cars. Picket fence with gate and pathway leading to front door. Planted, established flower beds. Path leading to back garden gate.

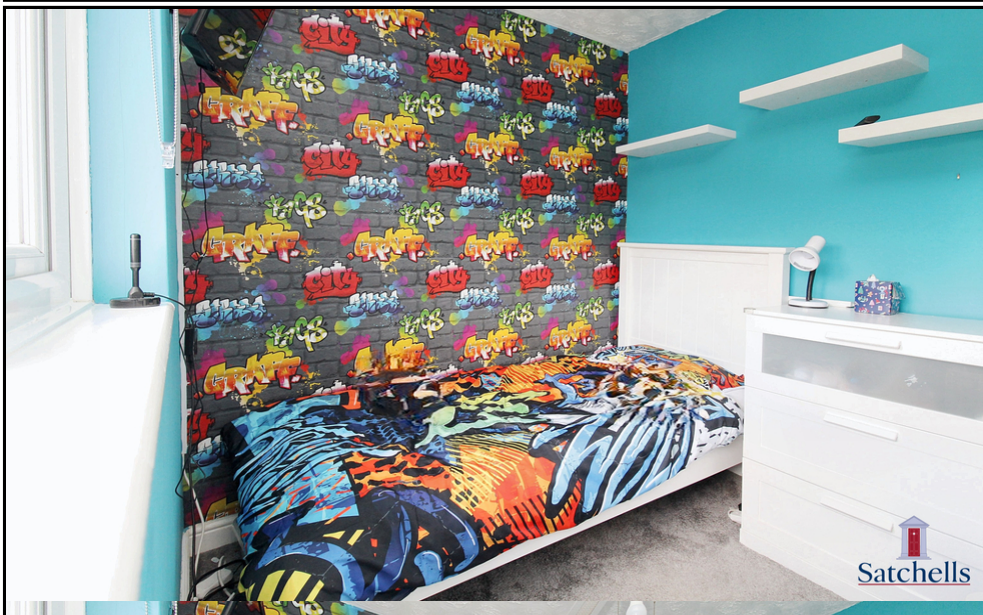
Rear Garden:

Enjoys a sunny aspect and non-overlooked to the rear. Mostly laid to lawn with patio area directly to rear of property. Block paved pathway leading down the side of the garden to another patio/seating space with picket fence, gate and summer house. Enclosed with fencing and planted borders and slate border for pot plants. Two garden sheds.

Additional Information:**Agents Note:**

Draft details yet to be approved by the vendor and may be subject to change.

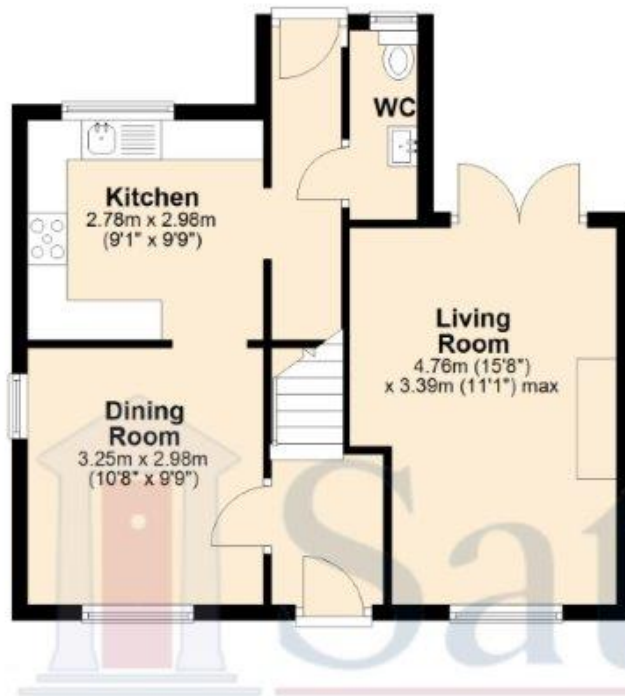




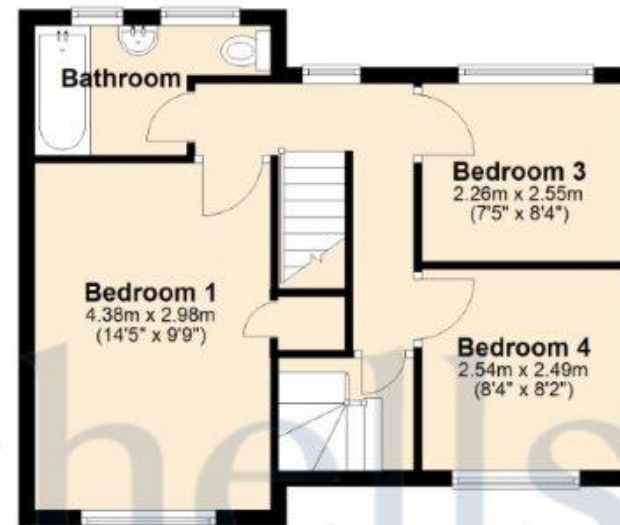
These particulars are a guide only and do not constitute an offer or a contract. The floor plan is for identification purposes only and not to scale. All measurements are approximate and should not be relied upon if ordering furniture, white goods and flooring etc. We have presented the property as we feel fairly describes it but before arranging a viewing or deciding to buy, should there be anything specific you would like to know about the property please enquire. Satchells have not tested any of the appliances or carried out any form of survey and advise you to carry out your own investigations on the state, condition, structure, services, title, tenure, and council tax band of the property. Some images may have been enhanced and the contents shown may not be included in the sale. Satchells routinely refer to 3rd party services for which we receive an income from their fee. If you would like us to refer you to one of these services please ask one of our staff who will pass your details on. We advise you check the availability of the property on the day of your viewing.



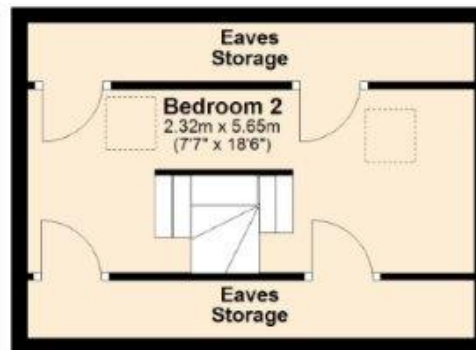
Ground Floor



First Floor



Second Floor



For illustrative purposes only - NOT TO SCALE - Measurements shown are approximate. The size and position of doors, windows, appliances and other features are approximate.
Plan produced using PlanUp.