

FOR SALE

Whitehall Gardens,
Grove Park, W4

Flat
Grove Park

£600,000 lh

2  1  1 

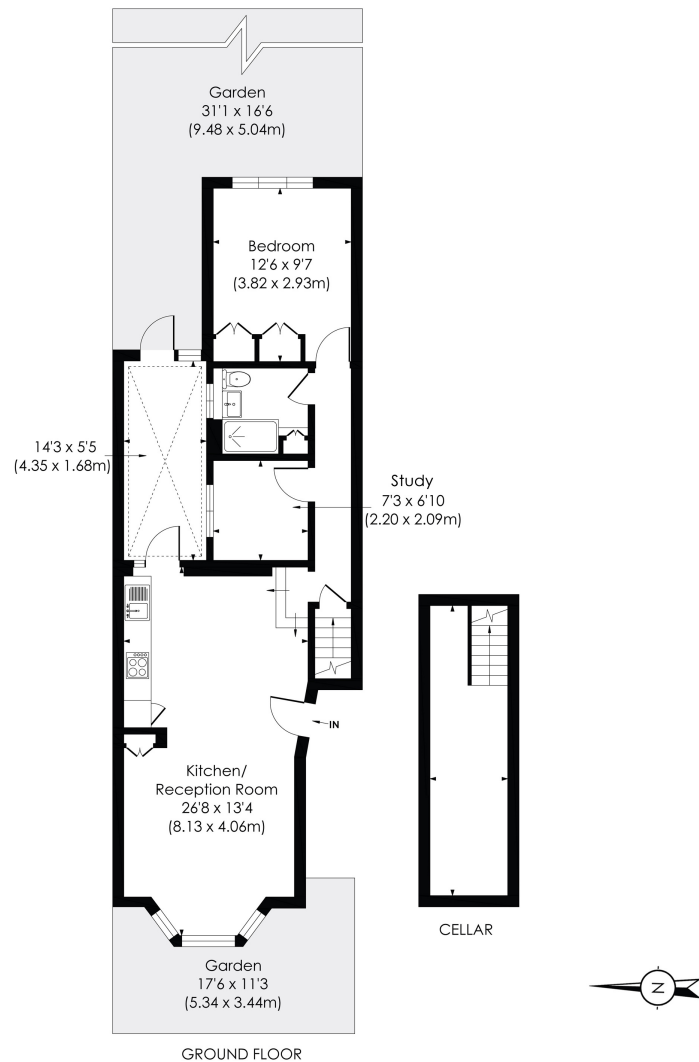


**horton
andgarton**

SALES / LETTINGS / PROPERTY MANAGEMENT

hortonandgarton.co.uk | Sales 020 3989 6464 | Lettings 020 3989 5454
161 Chiswick High Road, London, W4 2DT





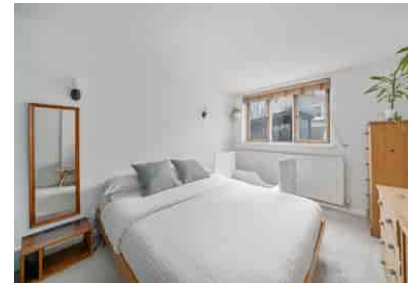
WHITEHALL GARDENS, W4

Approx. Gross Internal Floor Area
836 Sq' / 77.65 SqM (Including Cellar)
717 Sq' / 66.59 SqM (Excluding Cellar)

© Pixangle Property Marketing Ltd. info@pixangle.com Tel: 0208 870 2118

**horton
andgarton**

This floor plan has been prepared for the purpose of illustration only in accordance with the latest RICS code of measuring practice and is not to scale. All measurements and areas are approximate and whilst every effort has been made to ensure the accuracy of the plan contained here, no responsibility is taken for any error, omission or misstatement.



Victorian garden flat | One bedroom - One study - One bathroom | 717 Sq' - 66.59 SqM | Superbly presented | EPC rating D | Grove Park



hortonandgarton.co.uk
 Sales 020 3989 6464
 Lettings 020 3989 5454

161 Chiswick High Road, London, W4 2DT