







A detached bungalow which has been superbly extended and refurbished to provide high quality stylish accommodation that is ideal for any one looking for a comfortable home with a contemporary yet timeless feel set in a sought after cul de sac. Accommodation comprises: Entrance hall, impressive open plan kitchen/dining/ living room boasting a high quality chic kitchen with island and integral appliances, dining area with window over looking the pretty garden and living space with glazed sliding patio doors leading to the rear sun terrace. Utility, side lobby, office, bedroom one, bedroom two, bedroom three, luxury bathroom and separate cloakroom/WC. Outside: To the front of the property there is a neat lawn with well stocked border beds and detached garage approached over a driveway providing plenty of off road parking for several vehicles. Side access leads to the rear of the property where the attractive garden is well enclosed and offers a good of seclusion. There is a raised sun terrace, lawn and border beds being well socked with a variety of plants and shrubs. EPC Rating: C

Guide Price £485,000

Tenure Freehold

Property Type Detached Bungalow

Receptions 2

Bedrooms 3

Bathrooms 1

Parking Driveway & garage

Heating Gas

EPC Rating C

Council Tax Band D

Folkestone And Hythe District Council



Situation

The property is located in a sought after cul de sac in the heart of the village of Lyminge, nestled in the spectacular North downs it has a wonderful semi-rural feel, with an abundance of beautiful walks nearby and benefiting from the amenities the village has to offer. There is a Post Office & convenience Shop, hairdressers, two Doctors surgeries, Chemist and Primary School. The village offers various clubs and societies and there are good bus links to both Canterbury and Folkestone. Lyminge is a thriving community with lots of activities for all ages. In the nearby town of Folkestone there are mainline railway stations with High Speed services to London.

The accommodation comprises

Ground floor

Entrance hall

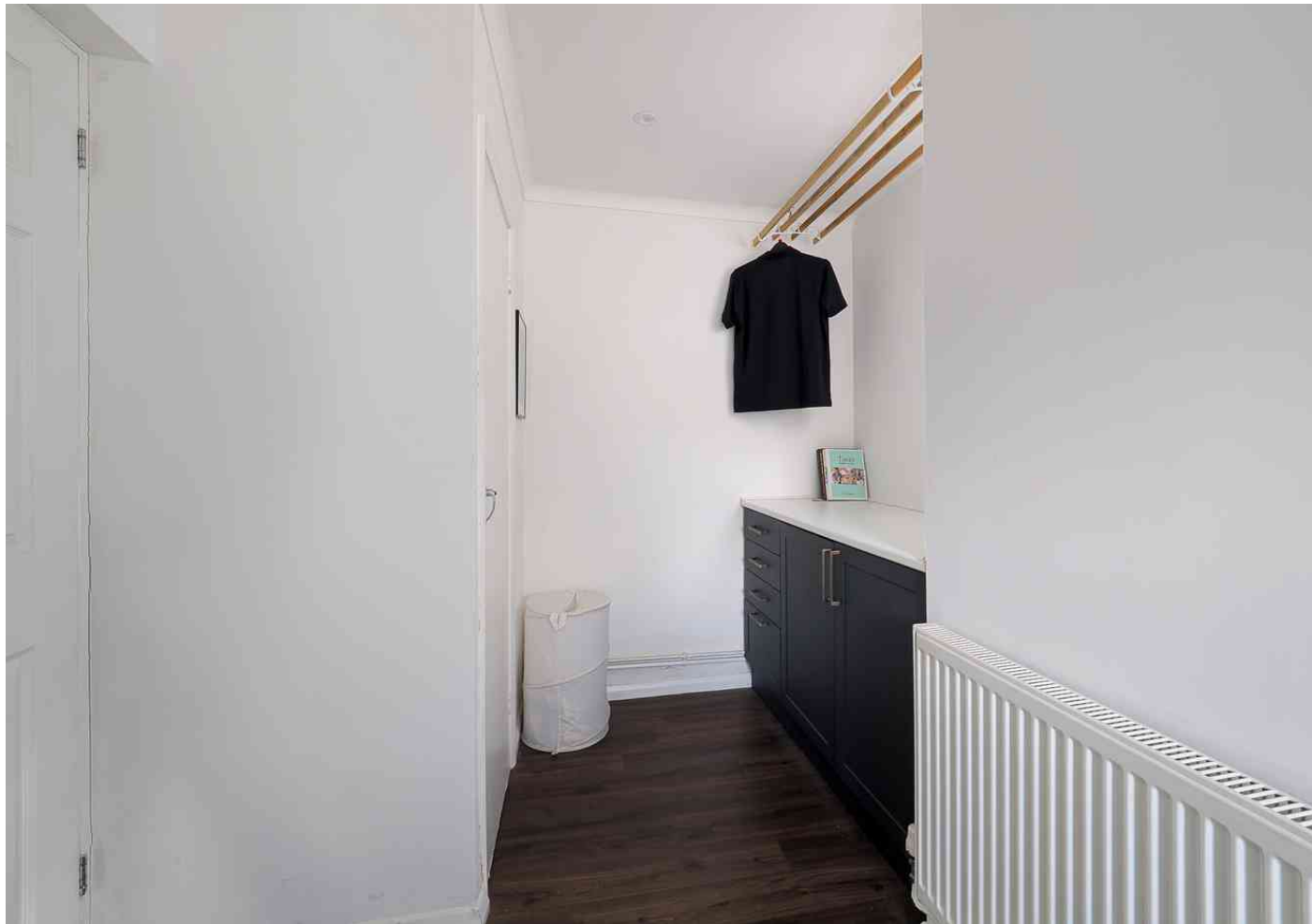
Impressive kitchen/living/dining room
24' 0" x 22' 10" (7.32m x 6.96m)

Utility
12' 0" x 7' 7" (3.66m x 2.31m)

Side porch

Office
12' 0" x 5' 9" (3.66m x 1.75m)





Bedroom one

13' 11" x 10' 0" (4.24m x 3.05m)

Bedroom two

12' 10" x 10' 0" (3.91m x 3.05m)

Bedroom three

9' 3" x 6' 11" (2.82m x 2.11m)

Cloakroom/WC

Bathroom

Outside

Garage

17' 5" x 8' 9" (5.31m x 2.67m) Garage approached over a driveway providing plenty of off road parking.

Gardens

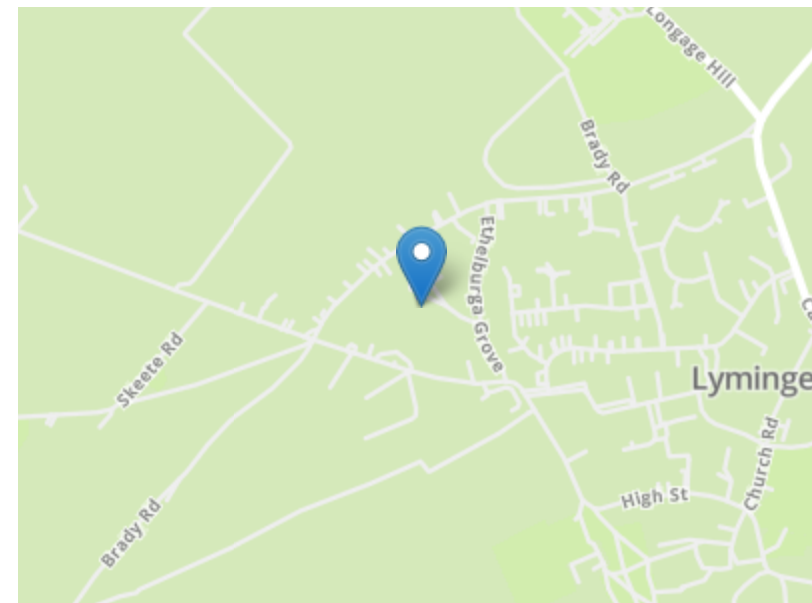
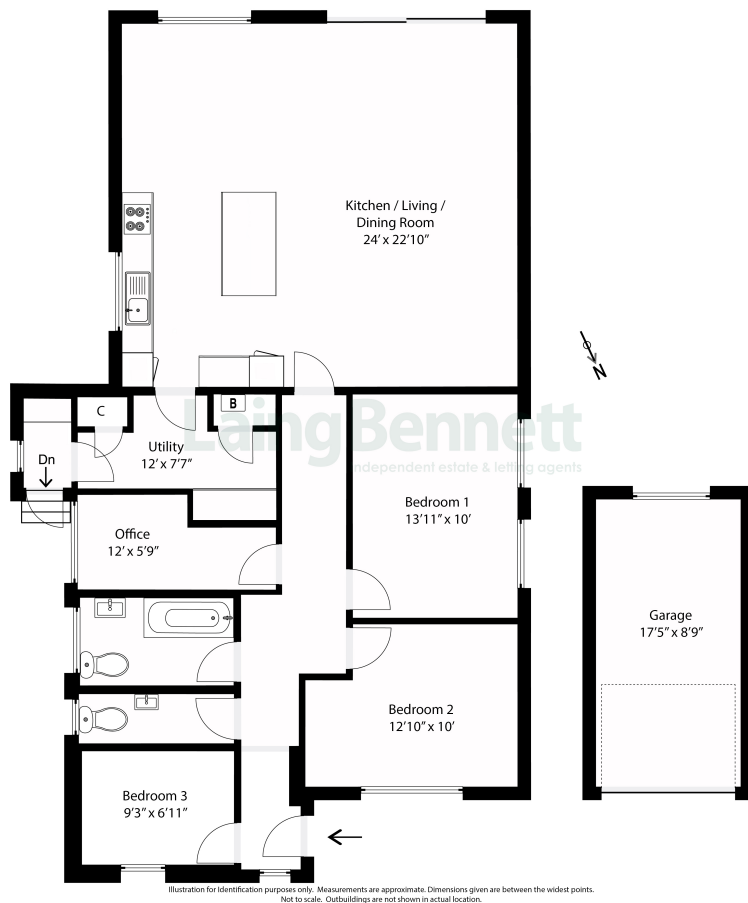
To the front of the property there is a neat lawn with well stocked border beds . Gated side access leads to the rear of the property where the attractive garden is well enclosed and offers a good degree of seclusion. There is a raised sun terrace, lawn and border beds being well stocked with a variety of plants and shrubs. EPC Rating: C







Approximate Gross Internal Area (Including Low Ceiling) = 116 sq m / 1252 sq ft
Garage = 14 sq m / 153 sq ft



Need to book a viewing?

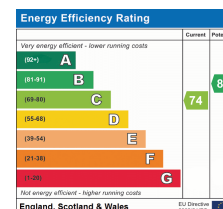
If you would like to book a viewing please contact our office on **01303 863393** or email **sales@laingbennett.co.uk**

See all our properties at



www.laingbennett.co.uk

The Estate Office
8 Station Road
Lyminge
Folkestone
Kent
CT18 8HP



These property details are intended to give a fair description and give guidance to prospective Purchaser/Tenant. They do not constitute an offer or contract of Sale/Tenancy and all measurements are approximate. While every care has been taken in the preparation of these details neither Laing Bennett Ltd nor the Vendor/ Landlord accept any liability for any statement contained herein. Laing Bennett Ltd has not tested any services, appliances, equipment or facilities, and nothing in these details should be deemed to be a statement that they are in good working order or that the property is in good structural condition or otherwise. We advise all applicants to commission the appropriate investigations before Exchange of Contracts/entering into a Tenancy Agreement. It should not be assumed that any contents/furnishing, furniture etc. photographed are included in the Sale/Tenancy, nor that the property remains as displayed in the photographs. No person in the employment of Laing Bennett Ltd has authority to make or give any representation or warranty whatever in relation to this property.