

46 Cathcart Drive, Orpington, Kent, BR6 8BX

**Property Images**

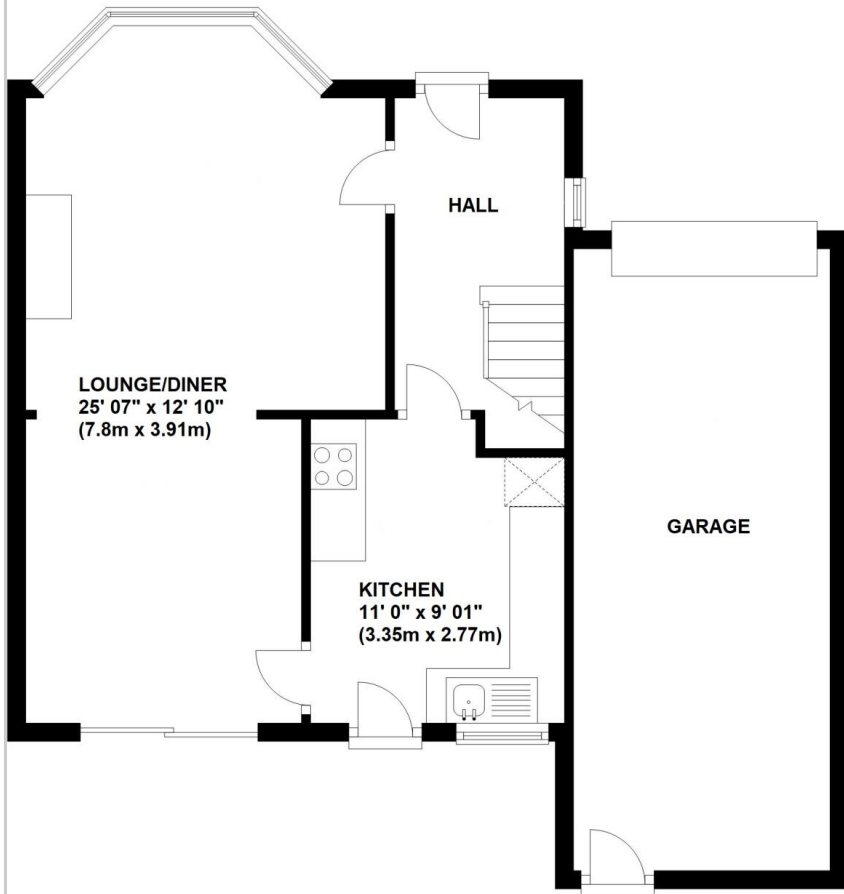






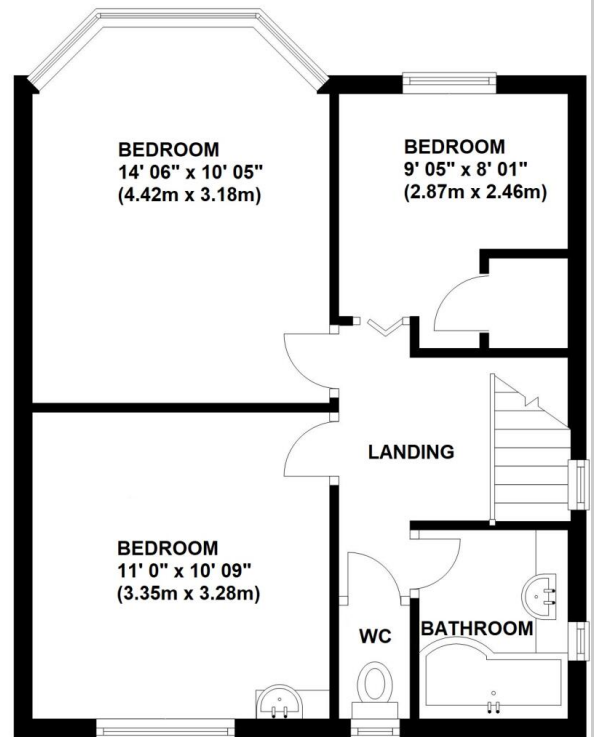
### Ground Floor

Approx. 60.7 sq. metres (653.2 sq. feet)



### First Floor

Approx. 40.8 sq. metres (439.0 sq. feet)



Total area: approx. 101.5 sq. metres (1092.1 sq. feet)