



Hunter Avenue, Shenfield, Brentwood, Essex, CM15 8PE
£1,200,000

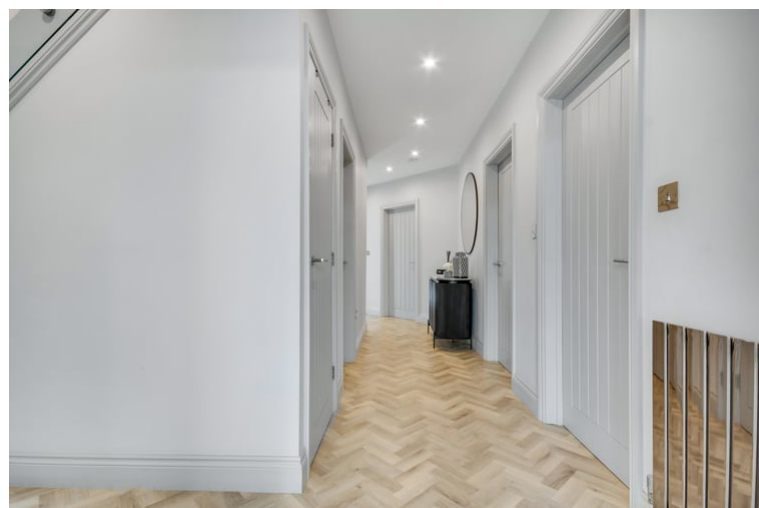


A charming and extremely well presented detached four bedroom modern family home, situated just a short walk from Shenfield High Street, Main and Elizabeth Line Station and also falling within the St Mary's School Catchment area. The property has been appointed to a very high standard throughout and extended at the rear to create a bright open plan Kitchen/Breakfast Living space, with direct access to the beautifully and well maintained rear garden. There is a recently added bespoke garden room which could be used as a home office/gymnasium or for entertaining. The master Bedroom has a dressing room and En-Suite. Three further bedrooms. A family Bathroom and a ground floor WC. An ideal arrangement of rooms for any family.

- FOUR DOUBLE BEDROOMS
- UTILITY ROOM
- WALKING DISTANCE OF SHENFIELD BROADWAY AND STATION
- GARDEN ROOM / GYMNASIUM
- HIGH SPECIFICATION THROUGHOUT
- OPEN PLAN KITCHEN / LOUNGE / DINER
- MASTER BED WITH DRESSING ROOM AND EN-SUITE
- SEPARATE LOUNGE
- OFF STREET PARKING FOR SEVERAL CARS
- ST MARY'S SCHOOL CATCHMENT

Ground Floor

Entrance Hall



Lounge



StudyArea



WC



Bedroom Two



En - Suite



Bedroom four



Master Bedroom

Kitchen/Dining/Family Room



Alternative View

Alternative View



Utility Room

First Floor

En -Suite



Bedroom Two



Family Bathroom



External

Front Driveway



Rear Garden



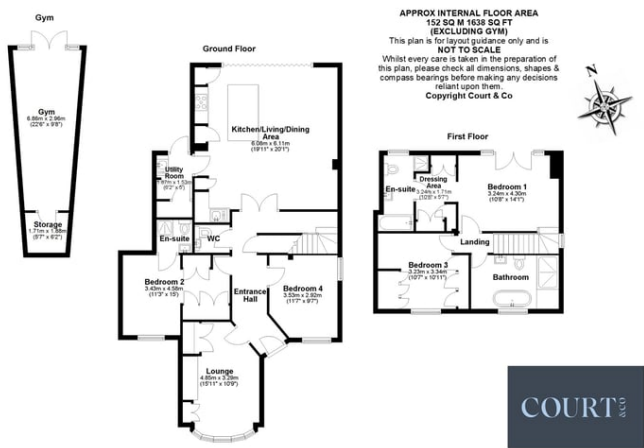
Alternative View



Garden Room/Gymnasium



Floor Plan



PROPERTY MISDESCRIPTIONS ACT 1991

The Agents not tested any apparatus, fixtures and fittings, or services, so cannot verify that they are in working order or fit for the purpose. The buyer is advised to obtain verification from his or her Professional Adviser. References to the Tenure of the property are based on information supplied by the Vendor. The agent has not had sight of the title documents. The buyer is advised to obtain verification from their Solicitor. You are advised to check the availability of any property before travelling any distance to view.