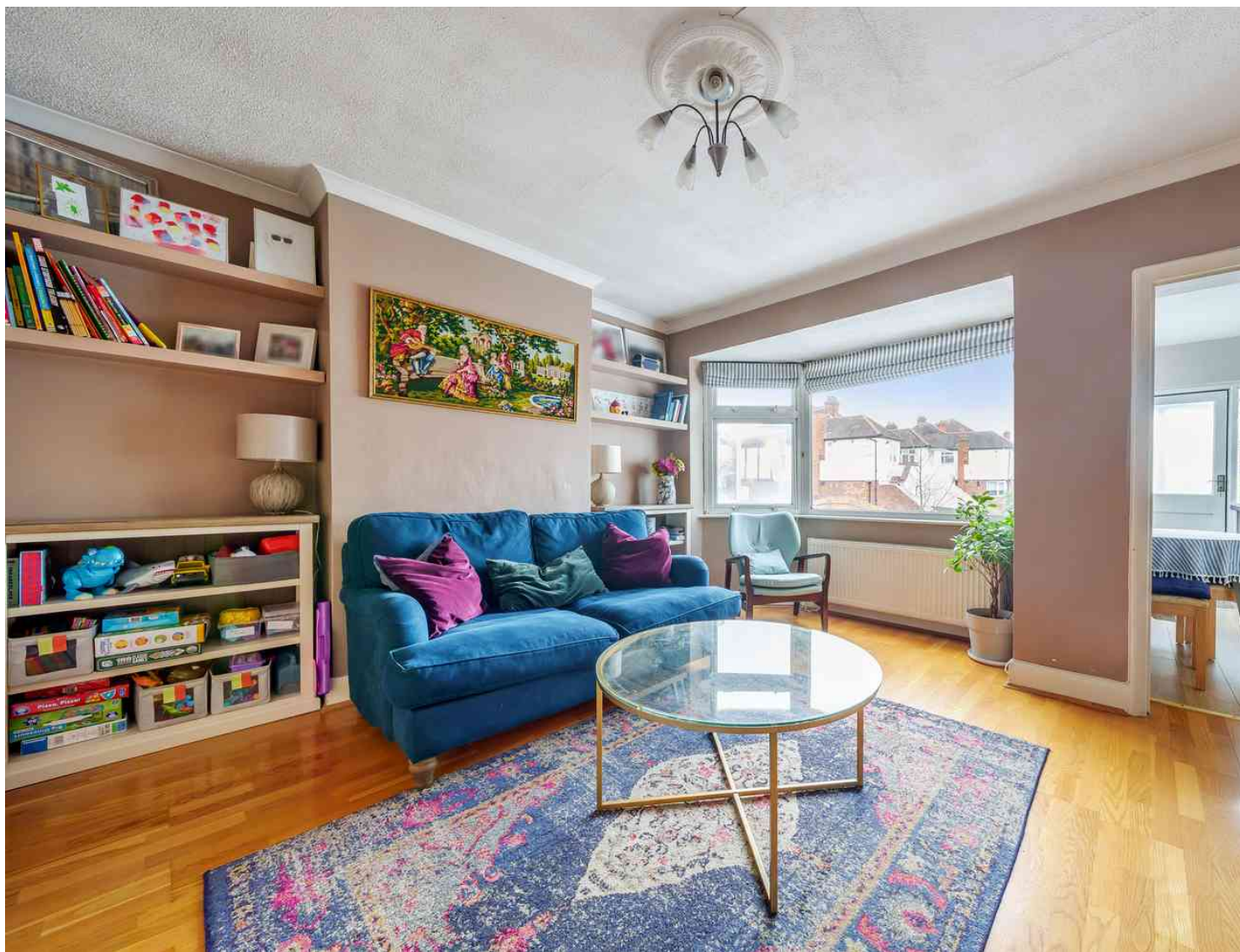




Leith Close, London, NW9 8DE

**Cow & Co**  
LONDON



A beautifully presented two bedroom first floor purpose built maisonette with a delightful garden. With an excellent eat in kitchen with direct access on to the garden and a great family bathroom this property is ideal for first time buyers or buy to let investors.

Superbly located in a sought after cul-de-sac, within a conservation area close to the stunning Welsh Harp Reservoir and Fryent Country Park. The property boasts bright and spacious accommodation.

The property is conveniently located within easy reach of Kingsbury, Wembley Park Underground Station (Jubilee Line) and Hendon stations as well as numerous regular bus routes, all providing excellent cross London links. There are a variety of local shops and amenities within a short distance as well as a selection of excellent local school including Kingsbury High & The French Lycee

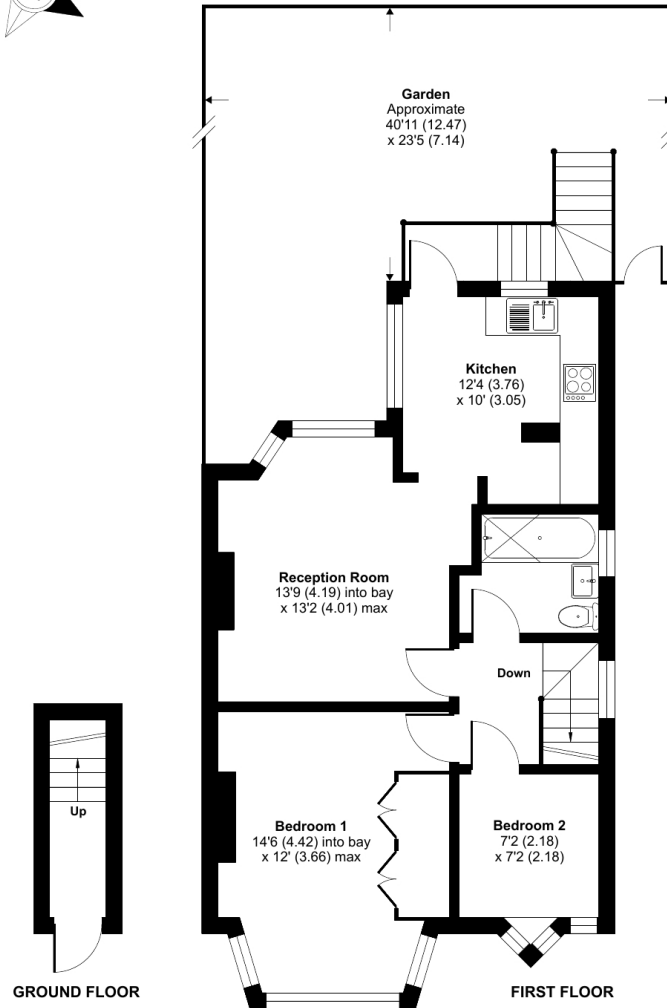


- First floor maisonette
- Two good sized bedrooms
- Large garden
- Excellent modern kitchen
- Long lease
- Conservation area
- Large bright reception room
- Quiet location

# Leith Close, London, NW9

Approximate Area = 683 sq ft / 59 sq m

For identification only - Not to scale



Floor plan produced in accordance with RICS Property Measurement Standards incorporating International Property Measurement Standards (IPMS2 Residential). © nchecon 2023. Produced for Cow & Co Properties Ltd. REF: 936655

Tel: 0208 065 0010  
Email: [thehub@cowandco-london.com](mailto:thehub@cowandco-london.com)  
Web: [cowandco-london.com](http://cowandco-london.com)

Agents note: All measurements are approximate and whilst every attempt has been made to ensure accuracy they are for general guidance only and must not be relied on. The fixture and fittings referred to have not been tested and therefore no guarantee can be given that they are in working order. Internal photographs are reproduced for general information and it must not be inferred that any item shown is included with the property.

**Cow & Co**  
LONDON