

Bessemer Place, Greenwich, London, SE10 0NB

£550,000

Fantastic opportunity to purchase one of the exclusive Platinum Riverside apartments. This rarely available 7th floor apartment offers generous accommodation, comprising of a spacious reception area, open plan to a sleek modern kitchen with integrated appliances, two double bedrooms, two bathrooms and a private balcony, the apartment is offered chain free. Further benefits include an allocated parking space, concierge services, communal roof terrace and residents only gym. The development is located minutes from North Greenwich tube station (Jubilee Line), the Emirates Cable Cars and the O2 with the many attractions within, including bars and restaurants. Other notable amenities within walking distance include, schools, the river bus, local retail park and supermarkets.

Viewing by appointment with 1st avenue.

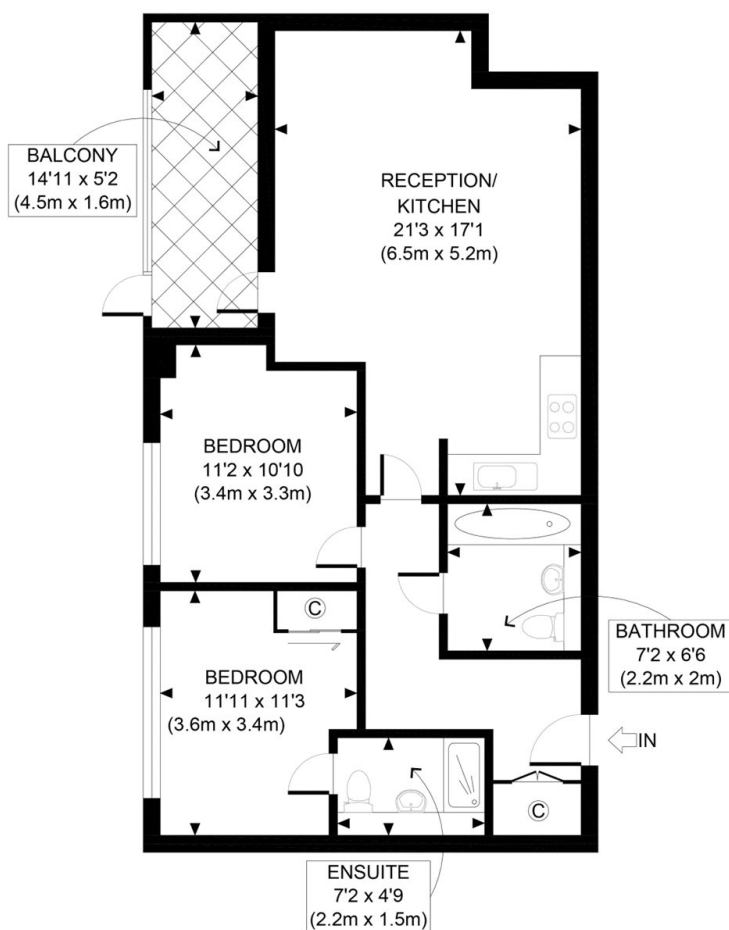
Call: 020 8293 8600

1st avenue, 128 Metcalfe Court, West Parkside, London SE10 0EL
email: info@1stavenue.co.uk

Bessemer Place, Greenwich, London, SE10 0NB

£550,000

1stavenue
Real Estate Services



FIRST FLOOR
GROSS INTERNAL
FLOOR AREA 704 SQ FT

APPROX. GROSS INTERNAL FLOOR AREA 704 SQ FT / 65 SQM

Ref:

Copyright **photoplan** 

Disclaimer: Floor plan measurements are approximate and are for illustrative purposes only. While we do not doubt the floor plan accuracy and completeness, you or your advisors should conduct a careful, independent investigation of the property in respect of monetary valuation

Viewing by appointment with 1st avenue.

Call: 020 8293 8600

1st avenue, 128 Metcalfe Court, West Parkside, London SE10 0EL
email: info@1stavenue.co.uk

1stavenue
Real Estate Services