

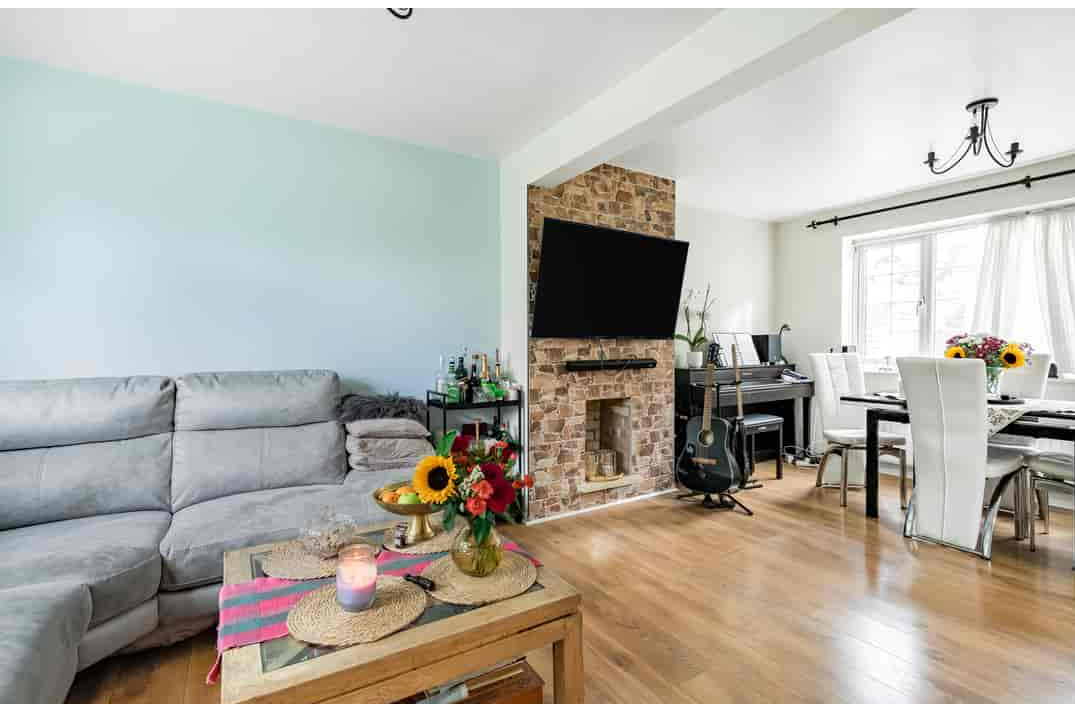


BarrettMove





**21 Stewarts Way, Marlow, Buckinghamshire SL7 3QL**  
Offers in the region of £600,000 - Freehold





## PROPERTY SUMMARY

Barrett Move is delighted to offer a three bedroom link detached home in a quiet cul de sac in Marlow Bottom with off street parking and garage. The house has lots of potential for extensions STPP

## POINTS OF INTEREST

- Potential to extend/convert the loft STPP
- West facing garden
- Lounge/diner
- Kitchen overlooking the garden
- Off street parking and garage
- Close to woodland walks
- In catchment for Burford primary, Great Marlow and excellent grammar schools

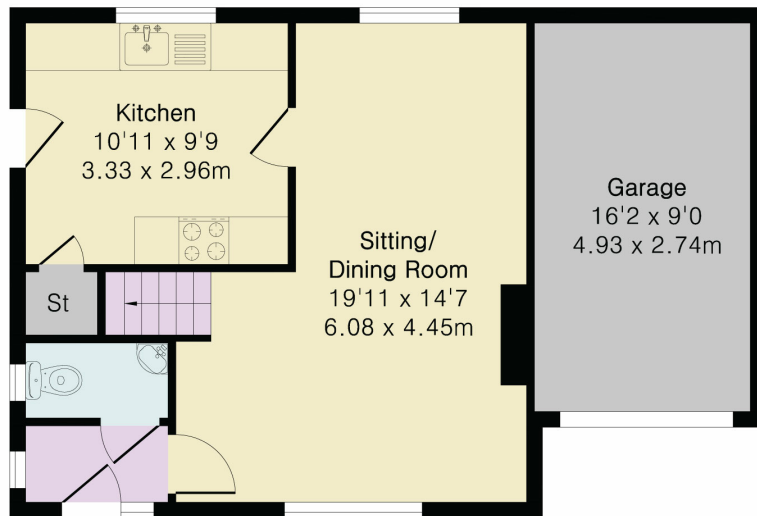


**Approximate Gross Internal Area 832 sq ft - 78 sq m  
(Excluding Garage )**

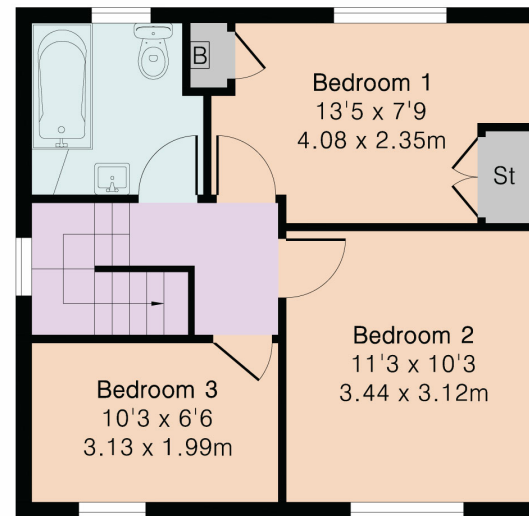
Ground Floor Area 416 sq ft – 39 sq m

First Floor Area 416 sq ft – 39 sq m

Garage Area 145 sq ft – 14 sq m



Ground Floor



First Floor



Floor plan produced in accordance with RICS Property Measurement 2nd Edition. Although Pink Plan Ltd ensures the highest level of accuracy, measurements of doors, windows and rooms are approximate and no responsibility is taken for error, omission or misstatement. These plans are for representation purposes only and no guarantee is given on the total square footage of the property within this plan. The figure icon is for initial guidance only and should not be relied on as a basis of valuation.

Energy Efficiency Rating		Current	Potential
Very energy efficient - lower running costs			
(92+)	<b>A</b>		
(81-91)	<b>B</b>		
(69-80)	<b>C</b>		
(55-68)	<b>D</b>		
(39-54)	<b>E</b>		
(21-38)	<b>F</b>		
(1-20)	<b>G</b>		
Not energy efficient - higher running costs			
England, Scotland & Wales		64	78