

FOR SALE

Standish Road,
Hammersmith, W6

Terraced House
St Peter's Conservation Area

£900,000 fh

3  2  1 



**horton
andgarton**

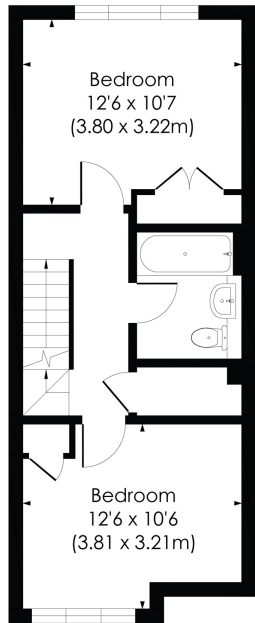
SALES / LETTINGS / PROPERTY MANAGEMENT

hortonandgarton.co.uk | Sales 020 8819 0510 | Lettings 020 8819 0511
172 King Street, Hammersmith, W6 0QU

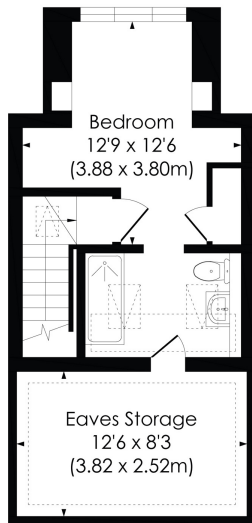




GROUND FLOOR



FIRST FLOOR



SECOND FLOOR



STANDISH ROAD, W6

Approx. Gross Internal Floor Area
1122 Sq'/104.27 SqM (Including Reduced Height)
989 Sq'/91.90 SqM (Excluding Reduced Height)

© Pixangle Property Marketing Ltd. info@pixangle.com Tel: 0208 870 2118



This floor plan has been prepared for the purpose of illustration only in accordance with the latest RICS code of measuring practice and is not to scale. All measurements and areas are approximate and whilst every effort has been made to ensure the accuracy of the plan contained here, no responsibility is taken for any error, omission or misstatement.



Family house with parking | Three bedrooms - Two bathrooms | 989 Sq' - 91.9 SqM | Modern interior | EPC rating C | St Peter's Conservation Area



hortonandgarton.co.uk
 Sales 020 8819 0510
 Lettings 020 8819 0511

172 King Street, Hammersmith, W6 0QU