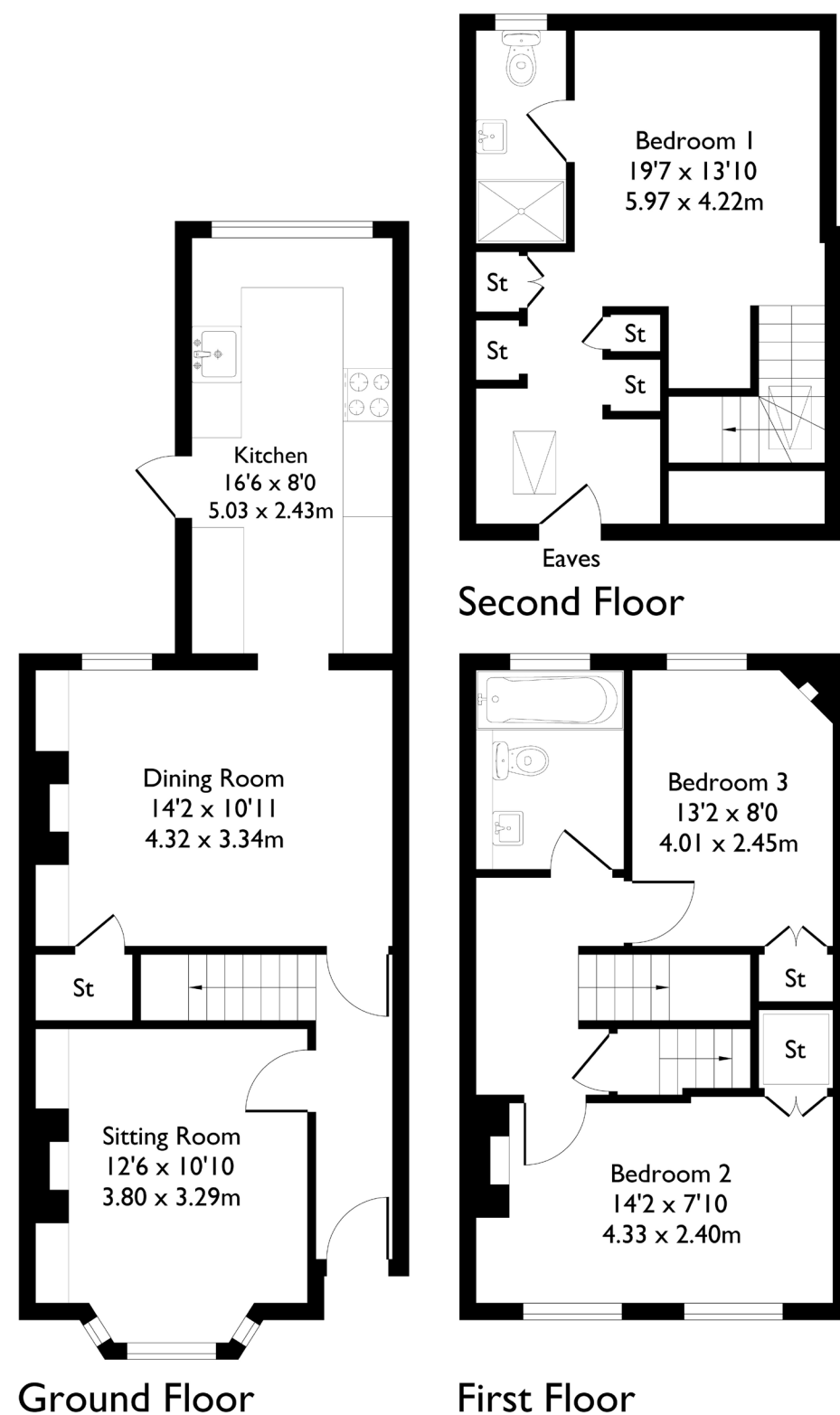


## Westfield Road, London, W13

Approximate Floor Area = 104.1 sq m / 1122 sq ft



### 3 BEDROOM HOUSE

## Westfield Road, W13

£850,000

Welcome to this Edwardian three-bedroom, two-bathroom home in the heart of Northfields.

As you step inside, you're greeted by a bright reception room to your left, with the staircase running through the centre of the home. To the rear, a separate dining area flows seamlessly into the kitchen, creating a sociable and practical layout.

### FEATURES

- Three Bedrooms
- Two Bathrooms
- Reception Room
- Separate Kitchen/Diner
- Northfields Station (Piccadilly Line)/ West Ealing Station (Elizabeth Line) 10 Minute Walk
- Northfields Amenities
- EPC Rating TBC





### 3 BEDROOM HOUSE

## Westfield Road, W13

On the first floor, you'll find two generous double bedrooms and a well-appointed family bathroom.

The top floor is dedicated to a spacious en-suite bedroom, complemented by a separate walk-in wardrobe.

The property enjoys an abundance of natural light and thoughtful storage throughout, making it both stylish and functional. Ideally located just five minutes from Northfield Avenue's array of shops and amenities, and only ten minutes from both Northfields Station and West Ealing's Elizabeth Line, this home is perfectly positioned for convenience and connectivity.

EPC Rating TBC.

