

## **KILBY COURT, SOUTHERN WAY, LONDON SE10 OPR**

**£325,000**

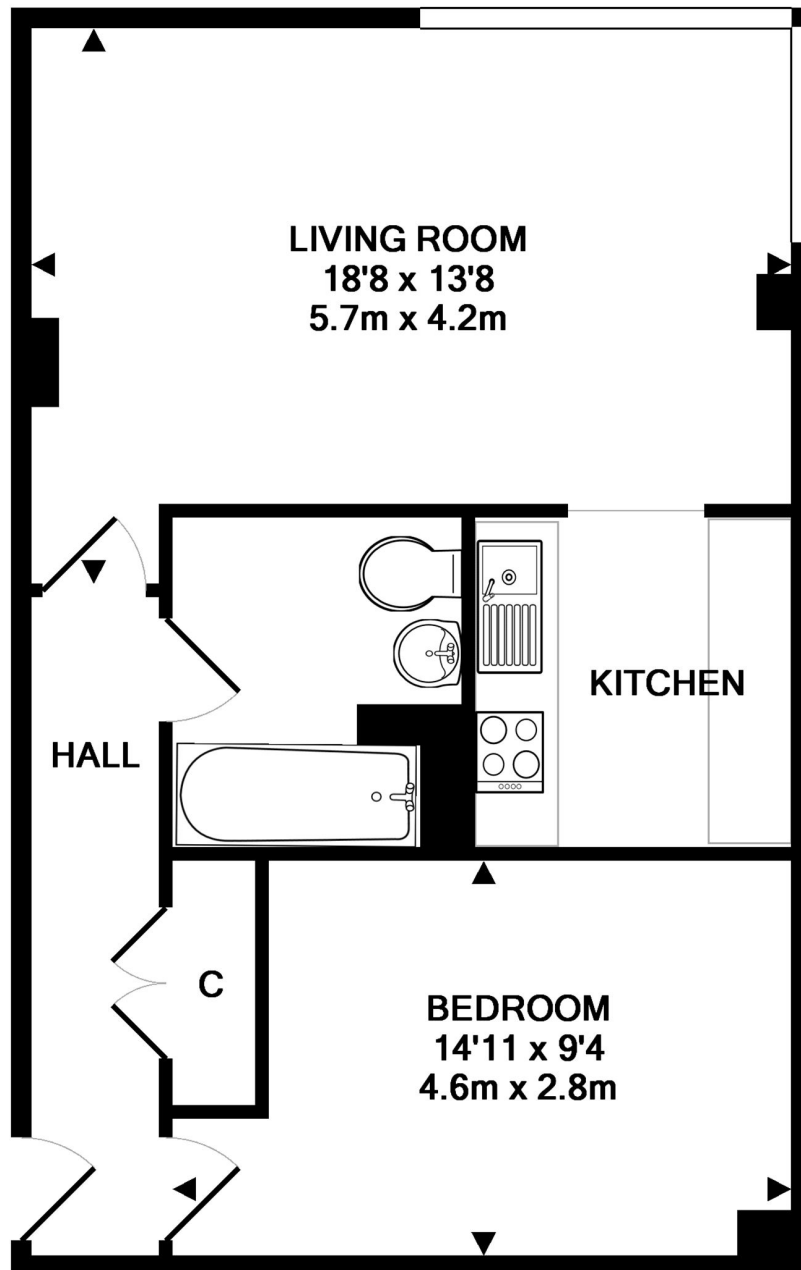
A beautifully presented, bright and spacious one bedroom second floor apartment, offering a contemporary interior.

The property is situated on the popular Greenwich Millennium Village development which is located a short walk from North Greenwich tube station (Jubilee Line), the Emirates Cable Cars and the O2 with the many attractions within, including bars and restaurants. It is also within walking distance to Sainsburys, Aldi, Asda and Ikea. The development is also home to an excellent primary school, nursery and Eco park. Further benefits include a 24 hour concierge, excellent transport links and located moments from the O2 Arena.

**VIEWING BY APPOINTMENT WITH 1ST AVENUE. CALL: 020 8293 8600**

**60 KILBY COURT,  
SOUTHERN WAY, LONDON  
SE10 OPR**

**£325,000**



TOTAL APPROX. FLOOR AREA 50.6 SQ.M. (544 SQ.FT.)

Whilst every attempt has been made to ensure the accuracy of the floor plan contained here, measurements of doors, windows, rooms and any other items are approximate and no responsibility is taken for any error, omission, or mis-statement. This plan is for illustrative purposes only and should be used as such by any prospective purchaser. The services, systems and appliances shown have not been tested and no guarantee as to their operability or efficiency can be given

Made with Metropix ©2010

**VIEWING BY APPOINTMENT  
WITH 1ST AVENUE.**

**CALL: 020 8293 8600**

**1stavenue**  
Real Estate Services