



3 Stanhope Court

Morecambe





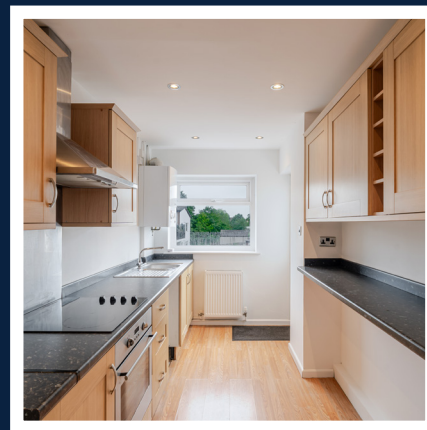
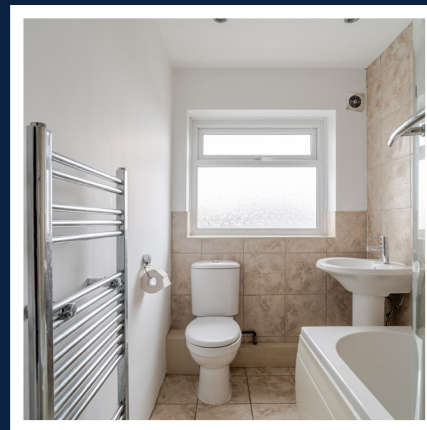
3 Stanhope Court



Looking for your first home or thinking of downsizing? This charming and generously sized first-floor apartment in Morecambe could be just what you've been waiting for.

Excellent located and well-presented throughout, it offers the perfect blend of comfort, convenience, and a little bit of sunshine thanks to not one, but two private balconies.

Tucked away in a well-maintained block with secure entry, this lovely apartment is light, bright, and ready to move into — perfect whether you're after a peaceful retreat or a fresh space to show off a bit.



2 BEDS



1 BATHS

- Brilliantly accessible location.
- Externally, the property has 2 spacious private balcony's at the front and the rear of the property to create a relaxing, super sunny, outdoor space.
- Allocated parking and a private garage.
- Sold with no chain delay.



Take a closer look...

Property Type:

Flat

Square Footage:

8613 sqft

Council Tax Band:

A

EPC Rating:

C

Tenure:

Leasehold

Why Morecambe?



You're brilliantly placed here, just minutes from the Bay Gateway link road for easy travel to the Lake District, Kendal, the Yorkshire Dales and beyond. Torrisholme village is nearby too, offering handy shops, cafes and everyday essentials.

Morecambe itself is a charming seaside town looking out over the sweeping sands of Morecambe Bay. It's the kind of place that feels like a slice of old-school British holiday nostalgia — with fish and chips by the prom, amusement arcades, and that fresh sea breeze that always wakes you up a bit.

In recent years, Morecambe's had a bit of a cultural revival. There's the beautifully restored Midland Hotel, a gleaming white Art Deco landmark right on the seafront. And with the exciting Eden Project North proposal in the pipeline, the area's future is looking very bright indeed.



The Bedrooms



The first bedroom is calm, cosy, and effortlessly elegant, with a lovely view out to the rear. There's even direct access to its own sunny balcony – perfect for relaxing after a long day.

The second bedroom offers loads of natural light and plenty of space to stretch out. Whether you're working from home or just having a lie-in, this is a room you'll want to spend time in.



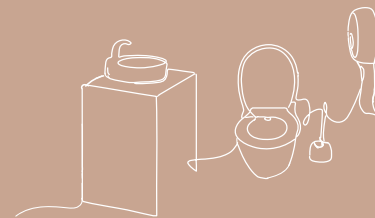
The Kitchen



The generously sized kitchen opens directly onto the first balcony — perfect for that much-needed cuppa in the morning.



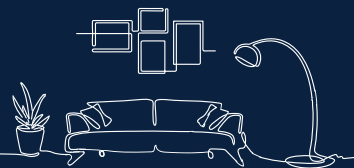
The Bathroom



A well-maintained, modern three-piece bathroom completes the layout.

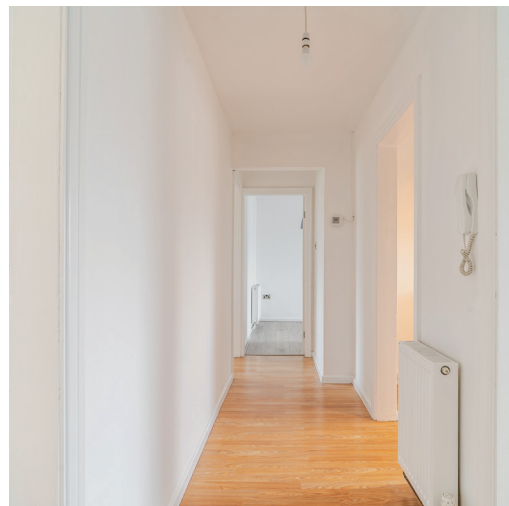


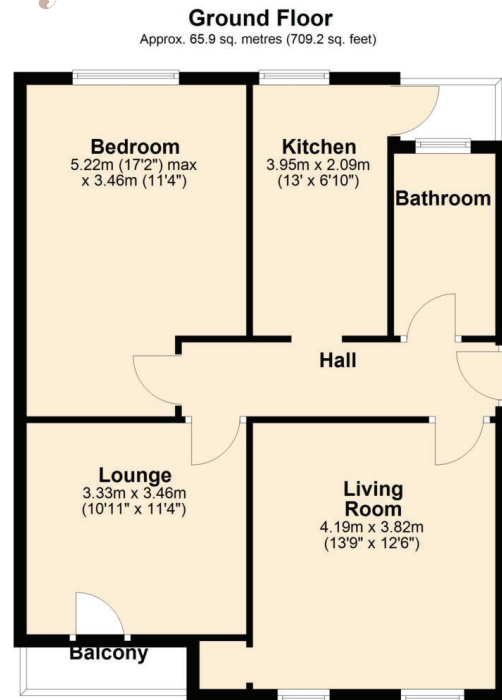
Lounge Diner



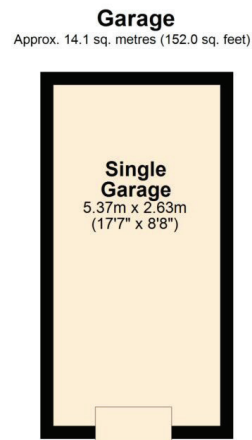
The private hallway leads to a spacious lounge and dining area – ideal for cosy nights in or catching up with friends.

Add in the smart wood flooring, modern light fittings, and fresh white walls, and you've got yourself a place that's move-in ready.





Total area: approx. 80.0 sq. metres (861.3 sq. feet)



Total Area: 80 sq. metres (861.3 sq. feet)



About Lune Valley Estates

Nestled in the heart of the breath-taking Lune Valley we are a professional independent agency specialising in luxury property. We understand the significance of moving home and that both selling your existing home and finding the next one is as much financial as it is emotional. We combine local expertise, a strong network of partners and a proactive approach to ensure you have the best possible experience and can begin the next chapter with excitement.



“Honesty, integrity, and client care are fundamental values stitched into the fabric that makes Lune Valley Estates and we make them a part of everything we do.”





3 Stanhope Court

Morecambe

/// [///moment.link.powers](https://moment.link/powers)



015242 56625 | team@lunevalleyestates.com | www.lunevalleyestates.com