

9 Tudor Way, Petts Wood, Orpington, Kent, BR5 1DZ

Property Images



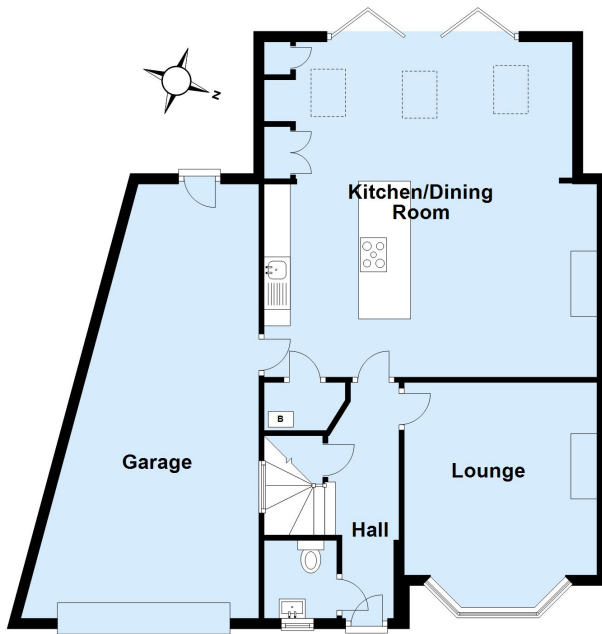






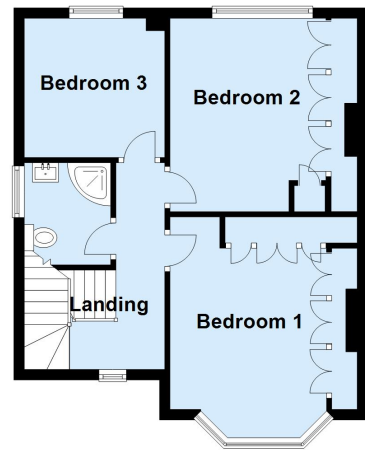
Ground Floor

Approx. 95.5 sq. metres (1028.3 sq. feet)



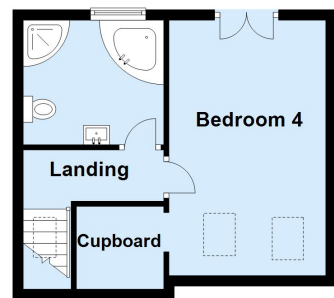
First Floor

Approx. 45.9 sq. metres (493.6 sq. feet)



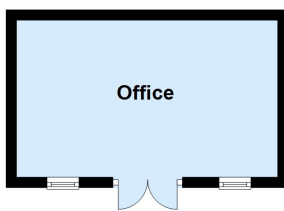
Second Floor

Approx. 29.0 sq. metres (311.7 sq. feet)



Outbuilding

Approx. 15.0 sq. metres (161.3 sq. feet)



Total area: approx. 185.3 sq. metres (1995.0 sq. feet)