



306 Princes Road, Dartford, Kent, , DA1 2PZ
Freehold



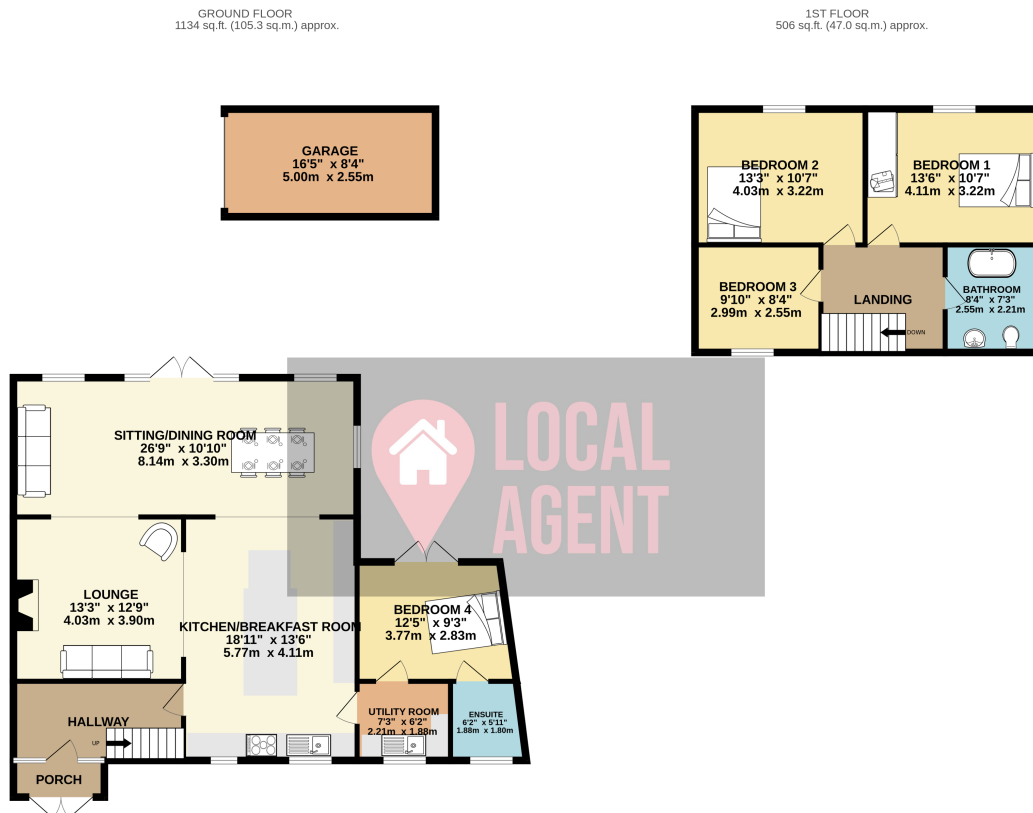
Description

Guide Price £700,000 - £725,000

Well presented Four Bedroom Semi Detached House has been extended to the side, rear and still offers potential to extend if more space is required (subject to planning permission). All the bedrooms are good sized rooms with a ground floor bedroom benefiting from a en-suite shower room and double door leading to the garden. The kitchen breakfast is at the front of the house with the utility room set off the kitchen. The lounge off the kitchen and additional reception room across the back of the home used as additional sitting room/diner. The garden has large patio area and mainly laid to lawn with large private drive (approx 100ft) to the rear leading to garage.

Use our online diary to request your viewing.

Located in West Dartford and within walking distance to both Dartford and Crayford High Street. Crayford Retail Park and Crayford Station approximately 1.1 miles away with direct links to London and within the Oyster zone 6 has become popular for the London commuter and with easy access to the A2 and M25. Perfectly located for easy access to Dartford Grammar Schools and both Wentworth and West Hill Primary Schools. Dartford town centre is a short walk away with many shops, cafes, pubs and restaurants. Other local benefits include the recently refurbished Fairfield Pool & Leisure Centre, David Lloyd Club and Dartford Football Stadium. For Dog walkers and outdoor enthusiast Dartford Heath is just a couple of minutes walk to enjoy the heathlands and wooded areas.



TOTAL FLOOR AREA: 1639 sq.ft. (152.3 sq.m.) approx.

Whilst every attempt has been made to ensure the accuracy of the floorplan contained here, measurements of doors, windows, rooms and any other items are approximate and no responsibility is taken for any error.