



Latchmore Close

Hitchin | Hertfordshire | SG4 9DE

www.stonegate-estates.co.uk



LATCHMORE CLOSE

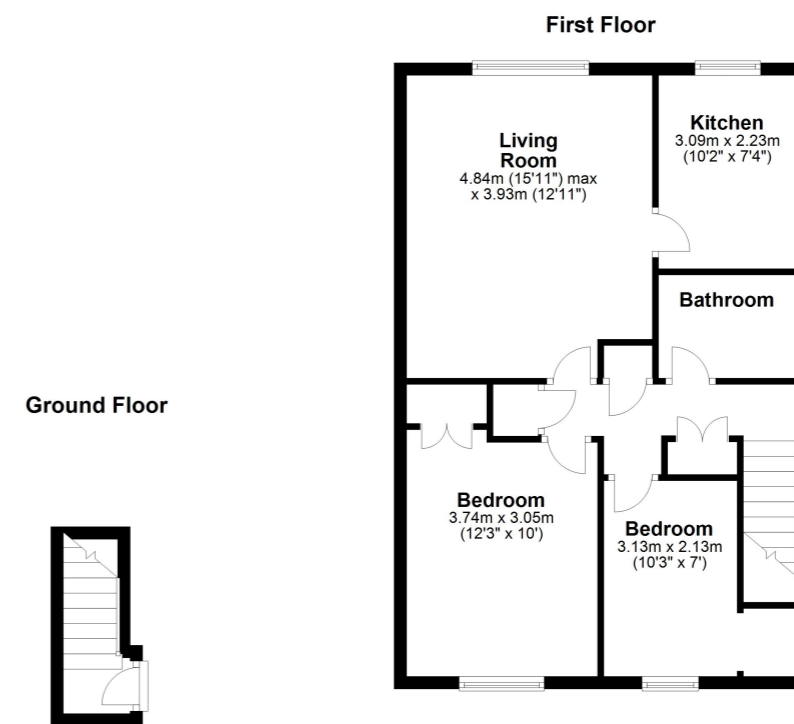
Property Description

A two bedroom first floor maisonette situated in a highly convenient location within the SG4 9.. postcode. The property offers well proportioned accommodation with it's own entrance and has been updated to include a refitted kitchen and a refitted bathroom. There is plenty of storage space with a number of cupboards in the hall, together with a roomy lounge, separate kitchen, bathroom and two bedrooms. Offered in excellent decorative condition throughout, the property is located just off St. Johns Road with a pleasant aspect from the lounge and kitchen over the adjacent playing field. There is a single garage in a nearby block.

Hitchin town centre provides a broad range of shops and regular traditional market; together with a good selection of restaurants, bars and pubs within it's historic centre. The town also provides a swimming centre, theatres and library; whilst the commuter is served by a mainline railway station (Kings Cross - 40 minutes) and direct road links to the A1(M).

£250,000 Leasehold





All measurements shown are approximate and for guidance only. Garages and workshops are not included in any gross floor areas unless integral to the main building where they will be included.
 Plan produced using PlanUp.



- SG4 9.. Postcode
- Excellent Decorative Order
- Garage (in block)
- Gas Radiator Central Heating
- Loft Space
- No Service Charge
- Ideal Investment/First Time Buy
- Double Glazed

EPC Rating:

Stonegate Estate Agents

01462 438979

sales@stonegate-estates.co.uk | www.stonegate-estates.co.uk

