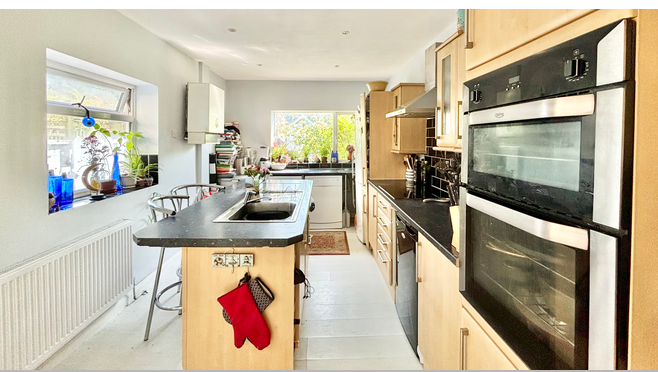
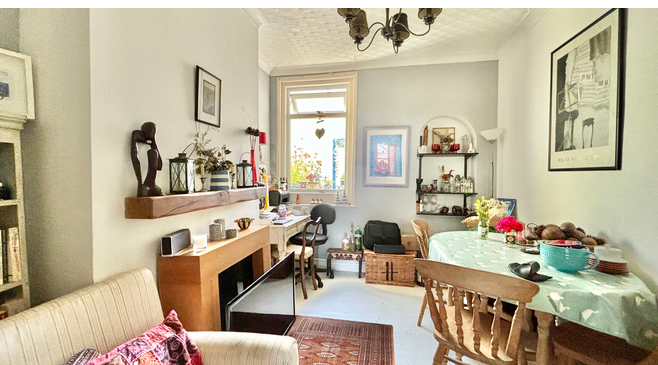




38 Wrestwood Road, Bexhill-on-Sea, East
Sussex, TN40 2LL

£299,950

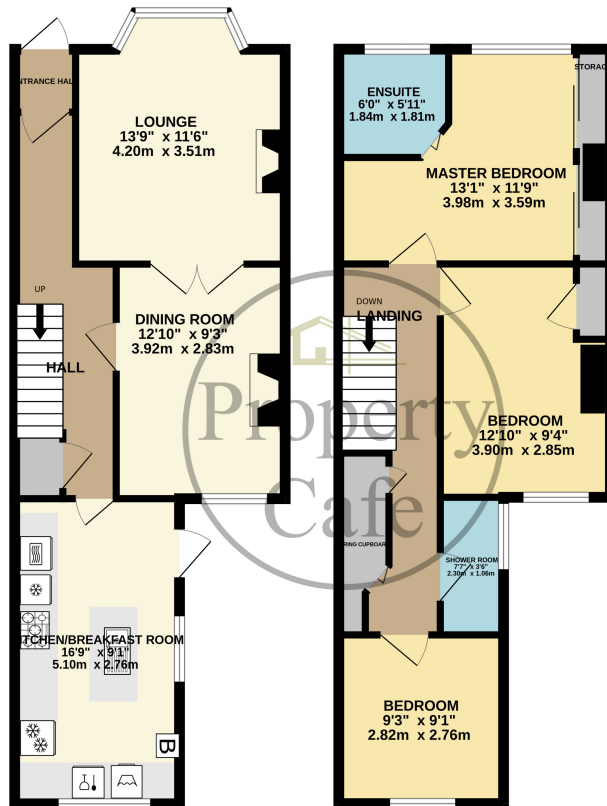


- Three Bedroom Victorian Cottage
- Master Bedroom With En-Suite
- Lovely Character Original Features
- Additional Converted Attic Room
- Lounge With Bay & Log Burner
- Separate Dining Room
- Good Size Fitted Kitchen/Breakfast Room
- Central Heating & D.Glazed
- South Facing Cottage Garden
- Enjoys A Quiet Elevated Position
- Close To Local Amenities & Bus Routes
- Walking Distance To Combe Valley Country Park
- Close To Bexhill & Sidley Towns



GROUND FLOOR
519 sq.ft. (48.2 sq.m.) approx.

1ST FLOOR
510 sq.ft. (47.4 sq.m.) approx.



TOTAL FLOOR AREA : 1029 sq.ft. (95.6 sq.m.) approx.

Whilst every attempt has been made to ensure the accuracy of the floorplan contained here, measurements of doors, windows, rooms and any other items are approximate and no responsibility is taken for any error, omission or mis-statement. This plan is for illustrative purposes only and should be used as such by any prospective purchaser. The services, systems and appliances shown have not been tested and no guarantee as to their operability or efficiency can be given.
Made with Metropix i2024

