

Regulated by:



RICS



Since 1989

Individual substantial country property with enchanting grounds. Near Newcastle Emlyn, West Wales



Valingdon, Cwmpengraig, Velindre, Llandysul, Carmarthenshire. SA44 5HT.

REF: R/2719/LD

£360,000

*** No onward chain *** Individually designed, unique character and substantial proportions *** Family home with generous living accommodation *** 3/4 double bedrooms, 3 bathrooms and a fantastic large kitchen *** Split level - Built into the surrounding Valley

*** Nestled within the picturesque wooded Valley *** Mature woodland garden with terraced lawned garden areas *** Bordered by a shallow stream surrounded by mature trees and shrubbery *** Utterly private yet within the centre of a rural Hamlet *** Integral garage and greenhouse *** Ample parking with a gated entrance

*** 1 mile from the local and popular Village of Velindre with everyday amenities *** Short drive to Newcastle Emlyn and Llandysul - 20 minute drive to Carmarthen *** Take in the country life but also enjoy the convenience of semi rural living

LOCATION

An attractive positioned country property in a pretty Hamlet setting within the popular Community of Cwmpengraig, being a Hamlet within the Teifi Valley, nestling in a sheltered woodland setting. The property is approximately 1 mile distant from the Village of Velindre providing a Primary School, Shops, Post Office and Public Houses, some 4 miles distant from the popular Teifi Valley Market Town of Newcastle Emlyn and some 13 miles North from the County Town and Administrative Centre of Carmarthen with National M4 Motorway and Rail Network connections.

GENERAL DESCRIPTION

An unique opportunity awaits. A substantial and deceptive 3/4 bedroomed property offering fantastic Family living accommodation with 3 double bedrooms and 3 bathrooms. The property sits on an extensive plot, being terraced and bordering a shallow stream, in all being mature, sheltered and not overlooked. The property in particular currently consists of the following:-

GROUND FLOOR

KITCHEN/DINER

23' 0" x 21' 0" (7.01m x 6.40m). A fantastic fitted farmhouse Shaker style kitchen with wall and floor units with work surfaces over, stainless steel sink and drainer unit, eye level double oven, 5 ring LPG hob, fitted dishwasher, space for a free standing fridge.



KITCHEN (SECOND ANGLE)



DINING AREA

Within the Dining Area lies a bay window enjoying views over the garden with French doors to the side and a stable door to the front, T.V. point.



DINING AREA (SECOND ANGLE)



LIVING ROOM

20' 6" x 15' 0" (6.25m x 4.57m). With an oil fired wood burner effect fire, radiator, bay window enjoying views over the front garden, two side windows, two radiators, T.V. point, pine flooring.



LIVING ROOM (SECOND ANGLE)



UTILITY ROOM

20' 7" x 7' 5" (6.27m x 2.26m). With fitted wall and floor units with work surfaces over, single sink and drainer unit, tiled flooring, radiator, side entrance door.



REAR HALLWAY

With staircase to the first floor accommodation, radiator.

GROUND FLOOR W.C.

With low level flush w.c., pedestal wash hand basin, extractor fan, pine flooring.



STUDY

11' 11" x 10' 5" (3.63m x 3.17m). With pine flooring, radiator.



TV. ROOM/POTENTIAL GROUND FLOOR BEDROOM 4

11' 6" x 10' 5" (3.51m x 3.17m). With pine flooring, radiator, TV. point.



FIRST FLOOR

GALLERIED LANDING AREA

With the main entrance door to the property from street level, linen cupboard.



FAMILY BATHROOM

16' 8" x 8' 4" (5.08m x 2.54m). With panelled bath, low level flush w.c., pedestal wash hand basin with shaver light and point, radiator, airing cupboard with hot water cylinder and immersion, extractor fan, pine flooring.



BEDROOM 3

15' 6" x 11' 4" (4.72m x 3.45m). With built-in cupboards, radiator, access to the 'Jack and Jill' Bathroom



BEDROOM 2

15' 8" x 11' 4" (4.78m x 3.45m). With built-in wardrobes and fitted cupboard with book shelves over, radiator, access to the 'Jack and Jill' Bathroom.



'JACK AND JILL' BATHROOM

With shower cubicle, low level flush w.c., pedestal wash hand basin, radiator, extractor fan.



PRINCIPAL BEDROOM 1

24' 0" x 14' 0" (7.32m x 4.27m). A large principal suite with its own cast iron feature fireplace, two windows enjoying views over the wooded Valley, two radiators, French doors opening onto a Juliet balcony.



EN-SUITE TO PRINCIPAL BEDROOM 1

With panelled bath, low level flush w.c., pedestal wash hand basin, enclosed shower cubicle, radiator, extractor fan.



INTEGRAL GARAGE

24' 0" x 10' 0" (7.32m x 3.05m). With an up and over door, solar panel control system, Worcester oil fired central heating boiler that runs all domestic systems.

N.B. The Garage has direct access via the upper level parking area.



EXTERNALLY

GARDEN

A terraced landscaped mature woodland garden with an enchanting walkway leading down from the driveway and also having direct access from the Kitchen/Diner.

Here lies the true beauty of the property, being totally private and not overlooked, and being nestled within this beautiful wooded Valley. The garden boasts a range of mature trees, shrubbery and flower borders whilst being bordered by a shallow stream. Truly picturesque and catches the imagination of country living.



GARDEN (SECOND ANGLE)



GARDEN (THIRD ANGLE)



LEAN-TO GREENHOUSE

10' 0" x 8' 0" (3.05m x 2.44m).

BORDERING A STREAM



SPECIAL NOTE

There are signs of Japanese Knotweed on the land, and an eradication programme has been put in place. Further details available from the sole Agents.

PARKING AND DRIVEWAY

A gated part tarmacadamed and part hard standing driveway leading to a large parking area with direct access onto the Integral Garage.



FRONT OF PROPERTY



AGENT'S COMMENTS

Deceptive and substantial individually designed property.

TENURE AND POSSESSION

We are informed the property is of Freehold Tenure and will be vacant on completion. No onward chain.

COUNCIL TAX

The property is listed under the Local Authority of Carmarthenshire County Council. Council Tax Band - 'F'.

Services

We are informed by the current Vendors that the property benefits from mains water, mains electricity, mains drainage, oil fired central heating, privately owned solar panels, UPVC double glazing, telephone subject to B.T. transfer regulations, Broadband available.

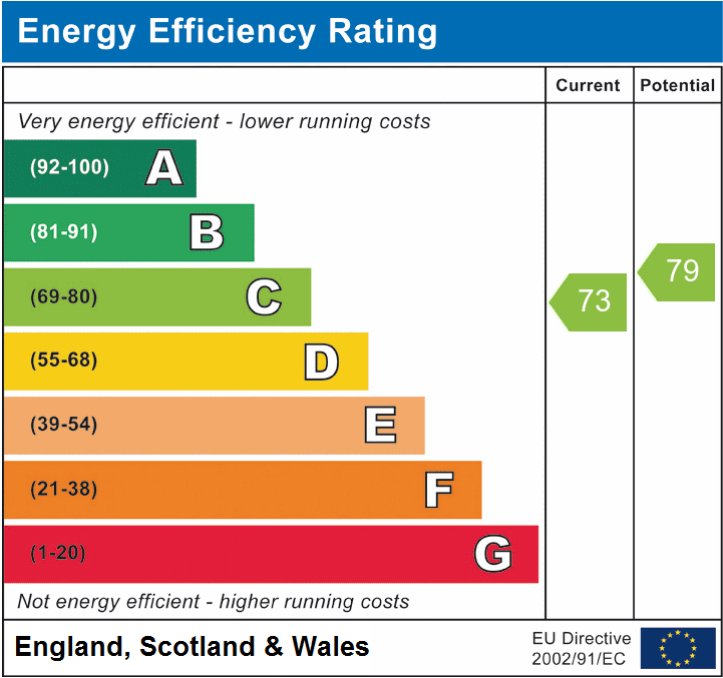
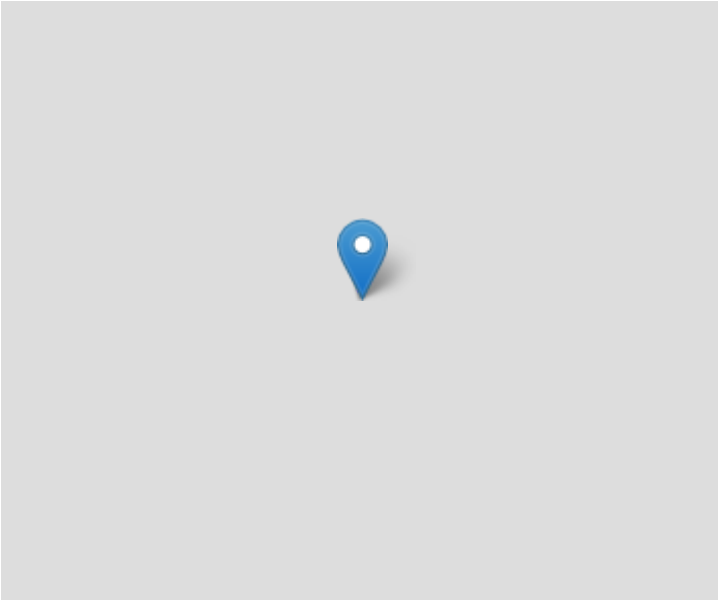
Directions

From Newcastle Emlyn take the A484 roadway to Pentrecagal. Turn right signposted Drefach Velindre. Continue through Waungilwen and subsequently Velindre. Proceed up the Valley to Cwmpengraig. On entering the Hamlet of Cwmpengraig the property will be located on your right hand side, as identified by the Agents 'For Sale' board.

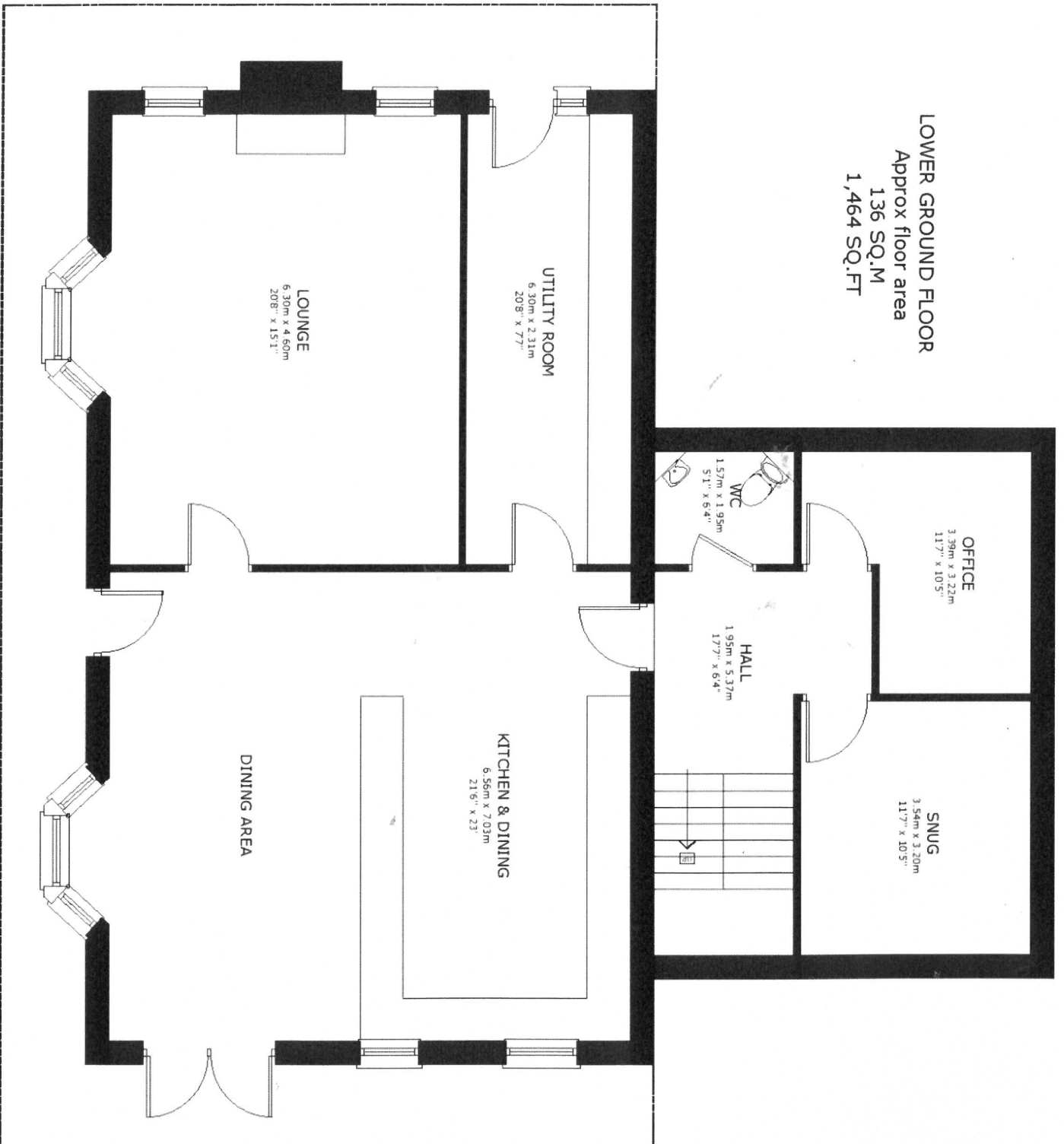
VIEWING: Strictly by prior appointment only. Please contact our Lampeter Office on 01570 423 623 or lampeter@morgananddavies.co.uk

All our properties are also available to view on our FACEBOOK Page - www.facebook.com/morgananddavies. Please 'LIKE' our FACEBOOK Page for new listings, updates, property news and 'Chat to Us'.

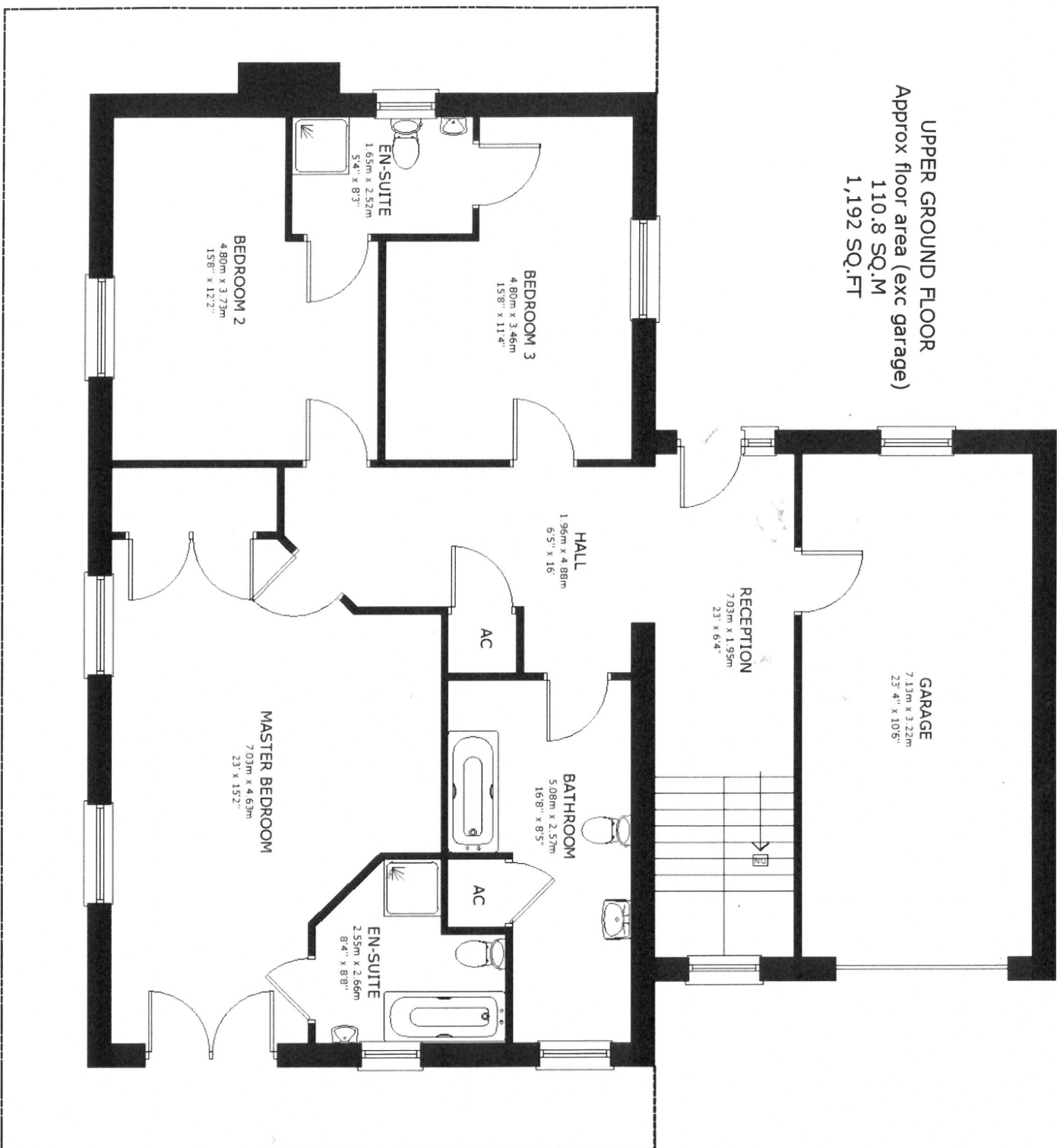
To keep up to date please visit our Facebook and Instagram Pages



Approx floor area
136 SQ.M
1,464 SQ.FT



UPPER GROUND FLOOR
Approx floor area (exc garage)
110.8 SQ.M
1,192 SQ.FT





HM Land Registry

BETA

MapSearch Snapshot

Page 1



0 5 10 15 20 25 30 35 40 50m

Map scale 1:1250

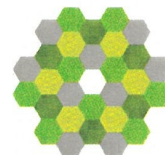
© Crown copyright and database rights 2021 Ordnance Survey 100026316

This map is for reference purposes only. You are not permitted to copy, sub-license, distribute or sell any of this data to third parties in any form.

Data last updated 10:00pm 21 OCTOBER, 2021

HM Land Registry
Official copy of
title plan

Title number **CYM12665**
Ordnance Survey map reference **SN3537SW**
Scale **1:2500 reduced from 1:1250**
Administrative area **Carmarthenshire / Sir
Gaerfyrddin**



©Crown Copyright. Produced by HM Land Registry. Reproduction in whole or in part is prohibited without the prior written permission of Ordnance Survey. Licence Number 100026316

