



FELLS GULLIVER  
ESTATE AGENTS

023 8028 4411  
[www.fellsgulliver.com](http://www.fellsgulliver.com)

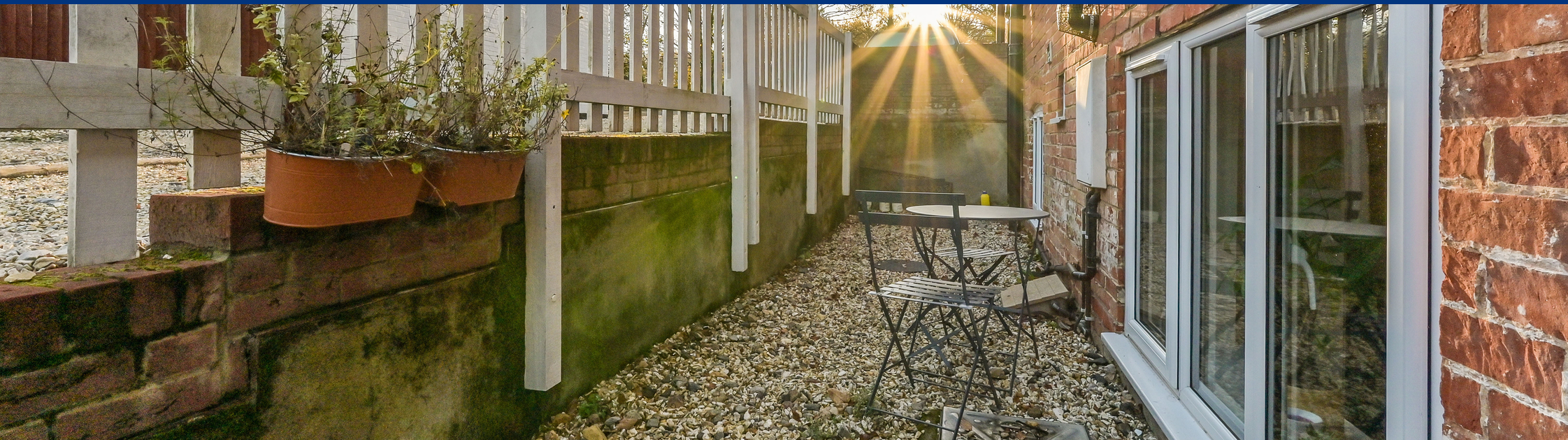


# 6 Knightwood Lodge, Southampton Road, Lyndhurst SO43 7BU

---

£140,000

- One bedroom maisonette
- Integrated appliances
- Private garden/outside area
- Offered with no chain
- Opposite Open Forest
- Gas central heating and double glazing
- Allocated parking space
- Great investment opportunity
- Vendor suited
- Central location







1



1



1

A charming ground floor one-bedroom maisonette featuring its own private garden and allocated parking space. The perfect opportunity for first-time buyers to step onto the property ladder. Ideally positioned just moments from Lyndhurst village centre and directly opposite the open Forest, this home offers both convenience and natural beauty.





This beautifully presented ground floor maisonette is located within the sought-after Knightwood Lodge, tucked away at the rear of the block for added privacy. It benefits from its own private entrance and a charming courtyard garden, making it an ideal choice for first-time buyers, downsizers, or investors. The property is offered in excellent decorative order and enjoys a prime position just a short walk from Lyndhurst village centre, while also being directly opposite the open Forest perfect for those who appreciate both convenience and natural surroundings.











Inside, the accommodation is well-proportioned and thoughtfully laid out. The open-plan kitchen, complete with integrated appliances, flows seamlessly into the living area, creating a bright and sociable space.

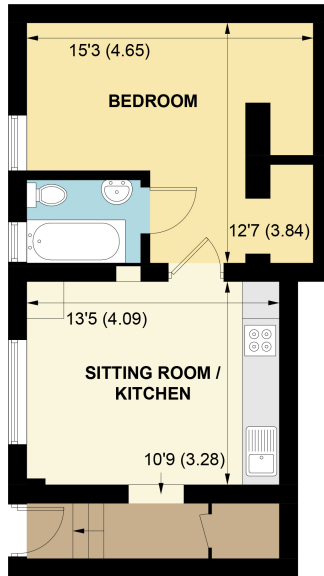
Off the lounge, you'll find a generously sized double bedroom with built-in storage and a modern bathroom. Outside, the private garden is perfectly suited for a small patio set, and the property also includes an allocated parking space.



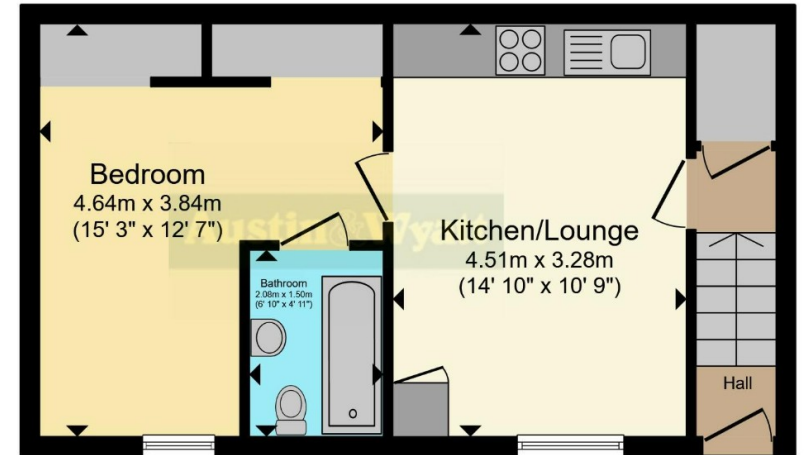
This is a rare opportunity to secure a stylish and practical home in a highly desirable location.

Early viewing is strongly recommended.





**GROUND FLOOR**



Total floor area 37.8 sq.m. (407 sq.ft.) approx

This floorplan is for illustrative purposes only and is not drawn to scale. Measurements, floor-areas, openings and orientations are approximate. They should not be relied upon for any purpose and do not form any part of an agreement. No liability is taken for any error or mis-statement. All parties must rely on their own inspections.

APPROXIMATE GROSS INTERNAL AREA = 408 SQ FT / 37.9 SQ M  
NOT TO SCALE (For illustrative purposes only as defined by RICS Code of Measuring Practice) 2023 ©  
Produced by Emzo Marketing





FELLS GULLIVER  
ESTATE AGENTS

023 8028 4411  
[www.fellsgulliver.com](http://www.fellsgulliver.com)