





An immaculately presented and extended family home in popular locality.

- Extended Family Home
- High Specification Throughout
- Three Reception Rooms
- Luxury Living Kitchen
- Utility Room & Shower Room
- Four Bedrooms & Bathroom
- Luxury Four Piece Bathroom
- Gardens & Driveway

Description

An immaculately presented and extended family home with high specification throughout. A composite door opens to an entrance hall with oak and glass balustrade, the fourth bedroom/home office sits to the left, whilst to the right there is a cosy lounge with bay window. Further doors lead off the hall to the dining room and kitchen. There is a large single story extension to the rear, which houses a luxury living kitchen with bi-folding doors leading to the garden. A useful utility room and shower room, housed in a side extension complete the ground floor. Upstairs there is a landing, three double bedrooms and a luxury bathroom. Externally there is a resin, triple width driveway to the front and to the rear there is a good size garden with porcelain tiled patios, a grassed area and there is a large timber shed for external storage. The property is not overlooked from the rear.



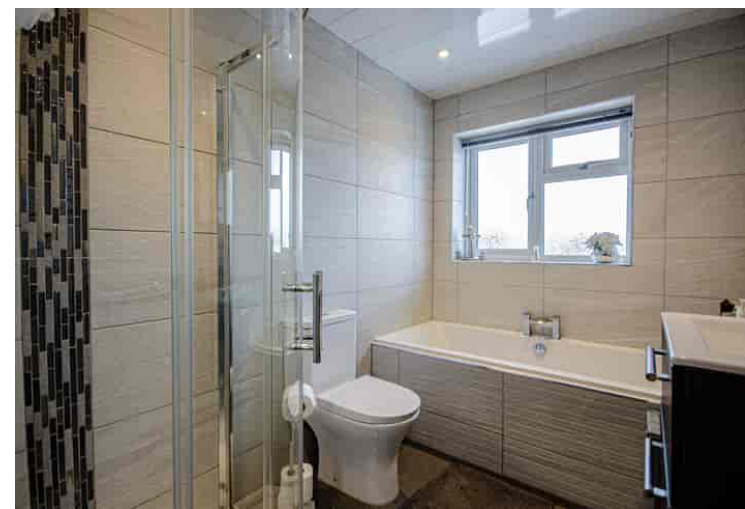
Location

The property is located in a popular residential area with local shops and other facilities available on either Chester Road, Castle or Winnington Lane. Winnington Park Community Primary School (Ofsted Good) serves the area and there are two local high schools located in Hartford and Weaverham. Two railway stations serve the area with the West Coast Main Line service running through Hartford, enabling access to London within two hours. Trains to Manchester and Chester run from Greenbank and Northwich stations. The A556 and A49 easily facilitate access to the region's major road network with Manchester and Liverpool airports both within 20 miles. Nearby Northwich caters for a more comprehensive range of amenities, including leading supermarkets with Waitrose, Sainsbury's and Tesco all represented

Tenure

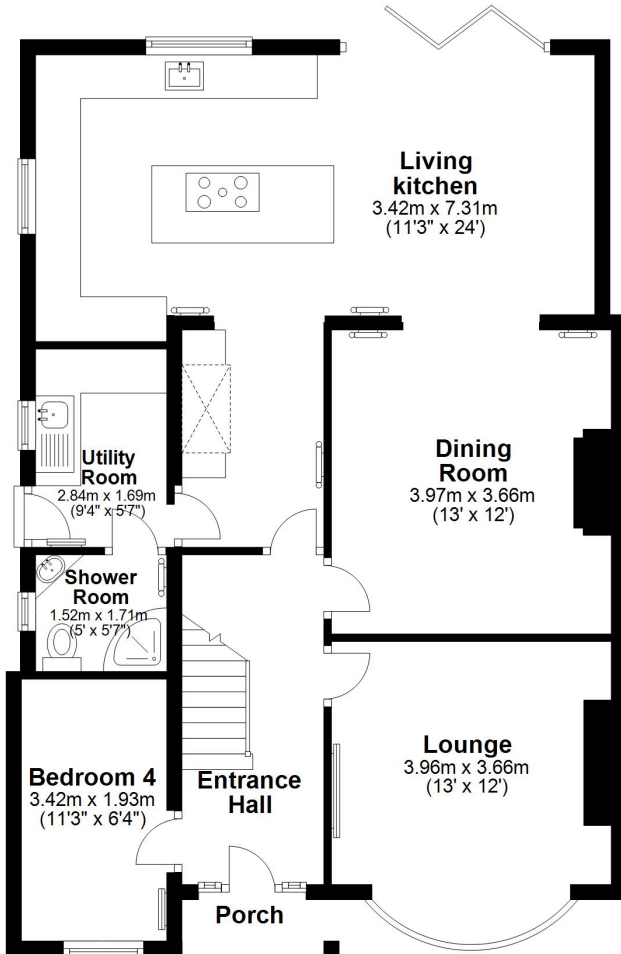
FREEHOLD

EPC Rating:



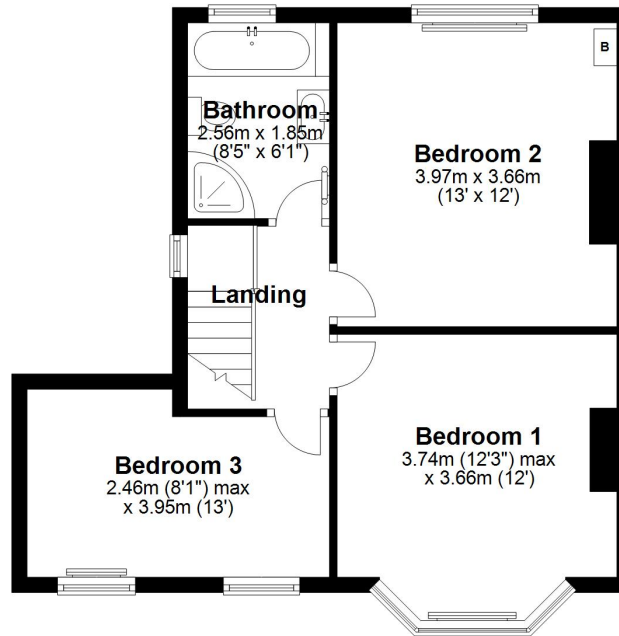
Ground Floor

Approx. 85.2 sq. metres (916.6 sq. feet)



First Floor

Approx. 46.2 sq. metres (497.4 sq. feet)



Total area: approx. 131.4 sq. metres (1414.0 sq. feet)

