

## **8 Ingram Close**

HAWKINGE, Folkestone  
CT18 7QQ

**£385,000 FREEHOLD**

DRAFT DETAILS....FOR SALE WITH BURNAP + ABEL.... Burnap + Abel are delighted to offer this spacious four bedroom semi detached house located in a sought after area in hawkinge. The spacious accommodation is spread over three floors and includes a large lounge/diner, kitchen, downstairs W.C, Four Bedrooms, two en-suite's and a family bathroom. Additional Benefits include a garage, off road parking for multiple vehicles, private rear garden and no onward chain. For your chance to view call sole agent Burnap + Abel now on 01303 258590





**Entrance Hall**

**Lounge**

16' 4" x 12' 6" (4.98m x 3.81m)

**Dining Room**

7' 9" x 7' 6" (2.36m x 2.29m)

**Kitchen**

12' 1" x 7' 10" (3.68m x 2.39m)

**W.C**

**First Floor Landing**

**Bedroom One**

10' 10" x 10' 10" (3.30m x 3.30m)

**En-Suite**

**Bedroom Two**

13' 3" x 8' 9" (4.04m x 2.67m)

**En-Suite**

**Second Floor Landing**

**Bedroom Three**

15' 8" x 9' 9" (4.78m x 2.97m)

**Bedroom Four**

10' 11" x 9' 10" (3.33m x 3.00m)

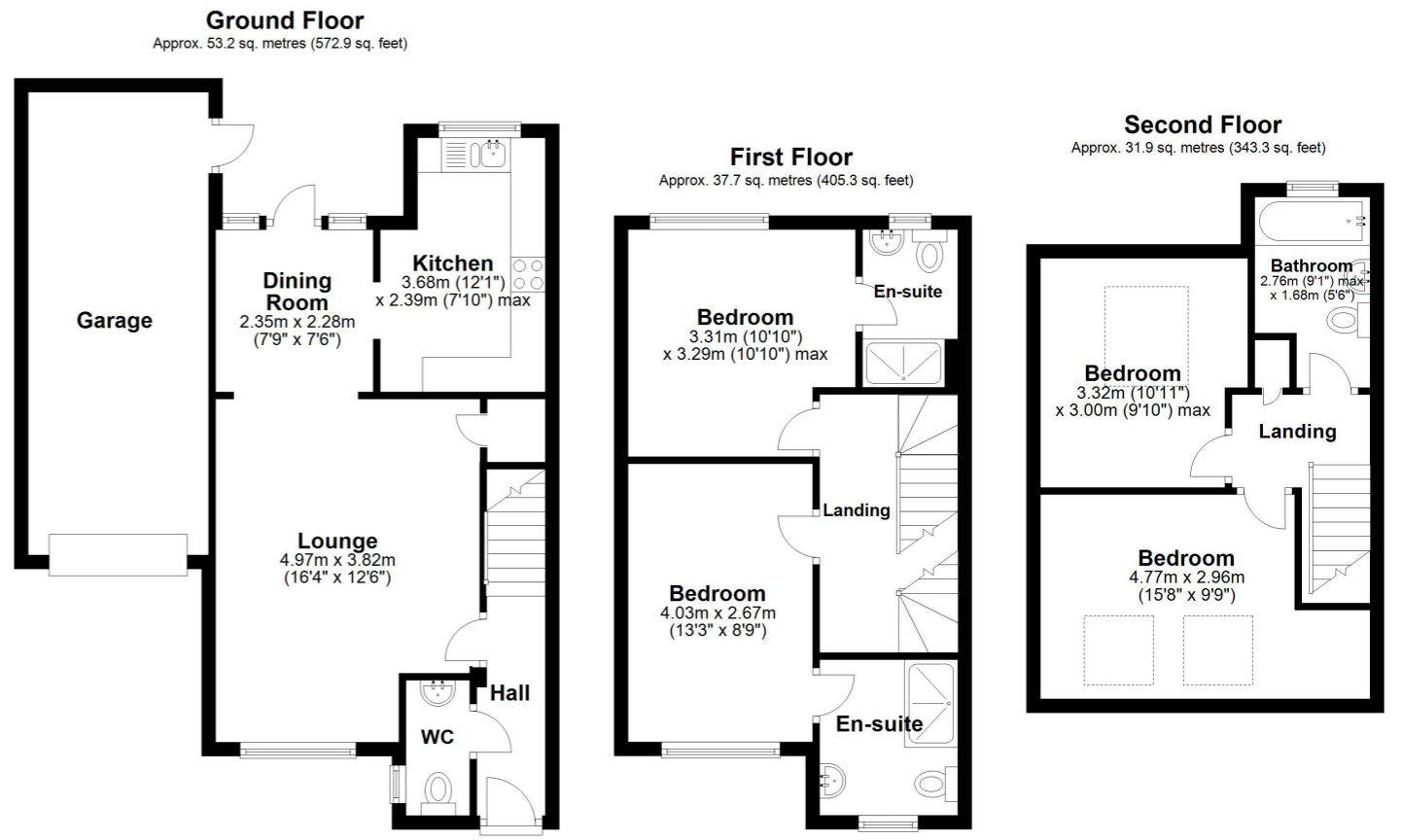
**Family Bathroom**

9' 1" x 5' 6" (2.77m x 1.68m)

**Garage**

**Off Road Parking**

**Rear Garden**



Whilst every attempt has been made to ensure the accuracy of the floor plan contained here, measurements of doors, windows, rooms and any other items are approximate and no responsibility is taken for any error, omission or mis-statement. This plan is for illustrative purposes only and should be used as such by any prospective purchaser.  
Plan produced using PlanUp.

