



19 Mercia Road, Baldock, Hertfordshire, SG7 6RZ

£385,000

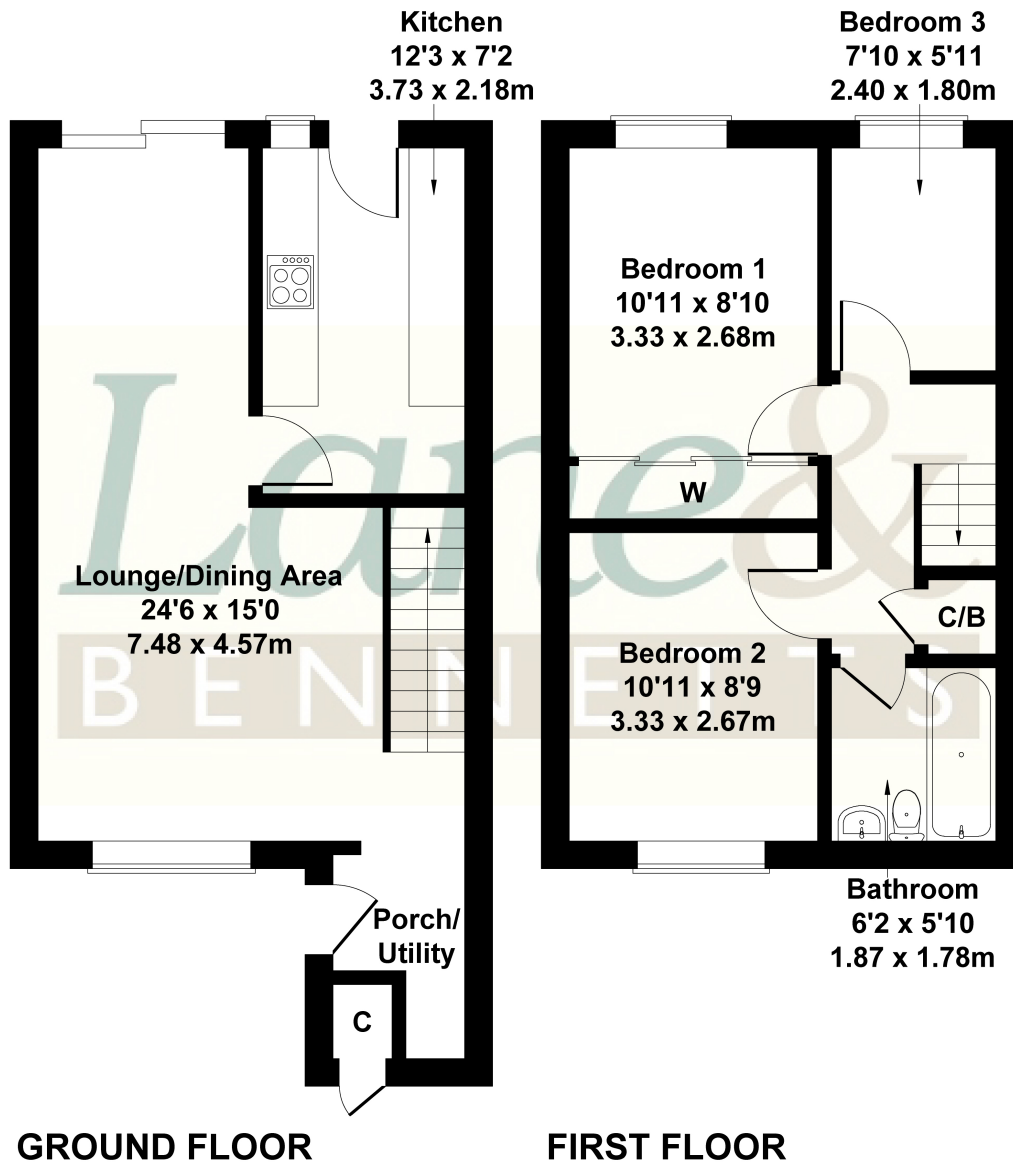
Lane & Bennetts are delighted to offer this delightful family home located on Baldock's popular Clothall Common. An attractive picket fence greets you as you approach the property. On entering this home you will find a useful entrance hall with ample space for shoes and cloaks and a clever utility area housing laundry machines. The light and airy, dual aspect open plan lounge / diner provides a super family space. The modern kitchen offers ample worktop space, useful shelving and integrated gas hob and oven. There is space and plumbing for a fridge freezer and dishwasher. To the first floor, the main bedroom has built-in mirrored wardrobes with window to rear aspect. There is a second double bedroom, currently used as an office, with built-in shelving and window to front aspect. Bedroom three is a perfect nursery / study. The family bathroom has been upgraded by the current owners, fully tiled, complete with bath and shower over, low level WC, wash hand basin and heated towel rail. On the landing there is a cupboard housing the newly replaced boiler, as well as a hatch with pull down ladder to the fully boarded loft.

*Lane &*  
BENNETTS



# SG7 6RZ

Approximate Gross Internal Area  
775 sq ft - 72 sq m



Not to Scale. Produced by The Plan Portal 2025  
For Illustrative Purposes Only.

- THREE BEDROOM FAMILY HOME
- MODERN KITCHEN
- DINING AREA
- PRIVATE GARDEN
- UPGRADED BATHROOM
- USEFUL UTILITY AREA
- GARAGE & PARKING
- LESS THAN 15 MINUTES WALK TO TOWN & STATION
- Tenure: FREEHOLD | Council Tax Band: C | EPC: TBC

