



£399,999 Leasehold
2 bedroom flat

Adenmore Road
Catford

Read all about it...

Offered to the market with no onward chain, this contemporary two-bedroom flat presents a fantastic opportunity for first-time buyers or investors seeking a move-in-ready home.

Situated on the top floor of Dunstone Court, a quiet and well-maintained apartment block within the sought-after Adenmore Road development, this property benefits from excellent transport links via the Twin Catford stations, as well as proximity to highly rated nurseries, schools, and an abundance of green open spaces. Both Catford Town Centre and Ladywell Village are within walking distance, offering a great selection of local shops, supermarkets, cafés, restaurants, and vibrant social spots.

Stepping inside, the welcoming entrance hall—complete with ample built-in storage and a handy utility closet—leads into a bright and spacious open-plan living area. The sleek, modern kitchen features integrated appliances and stylish cabinetry, seamlessly connecting to the living and dining space, which is perfect for both relaxing and entertaining. Large doors open directly onto the private balcony, offering a lovely spot for morning coffee or evening drinks. The flat comprises two well-proportioned double bedrooms, alongside a contemporary family bathroom. Additional benefits include an allocated off-street parking space.

Tenure: Leasehold | **Council Tax:** Lewisham band C

TOP FLOOR

Entrance Hall

Double-glazed window, inset ceiling spotlights, utility cupboard with plumbing for washing machine, storage cupboard, laminate wood flooring.

Open Plan Kitchen & Living Room

6.00m x 3.86m (19' 8" x 12' 8")

Double-glazed window and sliding doors to balcony, pendant ceiling lights, inset ceiling spotlights, fitted kitchen units, 1.5 bowl sink with mixer tap and drainer, integrated dishwasher, fridge/freezer, oven, electric hob and extractor hood, radiators, laminate wood flooring.

Bedroom

5.64m x 2.65m (18' 6" x 8' 8")

Double-glazed windows, pendant ceiling lights, radiator, fitted carpet.

Bedroom

3.06m x 3.05m (10' 0" x 10' 0")

Double-glazed window, pendant ceiling light, radiator, fitted carpet.

Bathroom

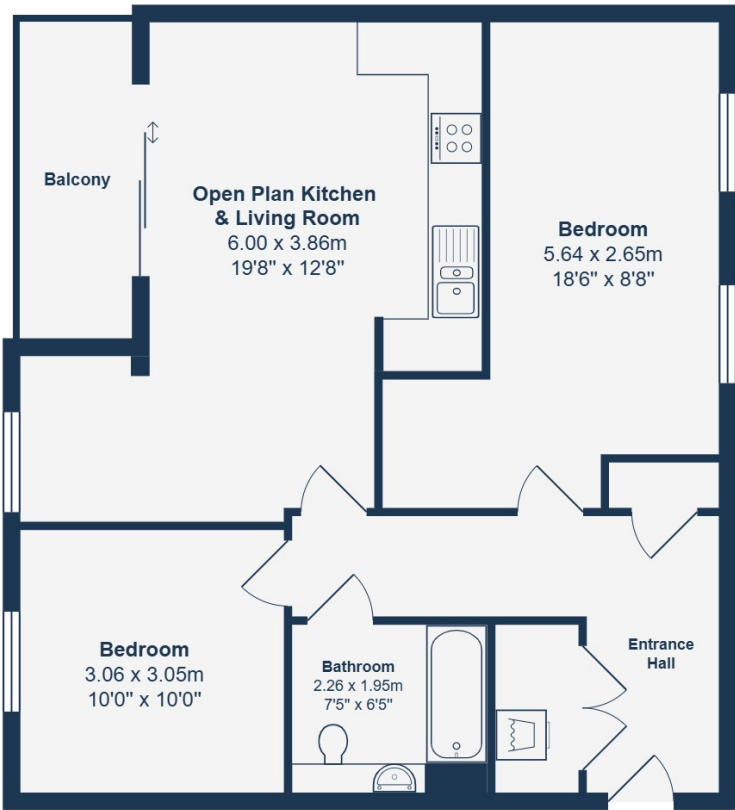
2.26m x 1.95m (7' 5" x 6' 5")

Inset ceiling spotlights, bathtub with shower and screen, washbasin on vanity unit, WC, heated towel rail, tile flooring.

OUTSIDE

Balcony

Allocated Parking Space



Top Floor

Total Area: 66.7 m² ... 718 ft² (excluding balcony)

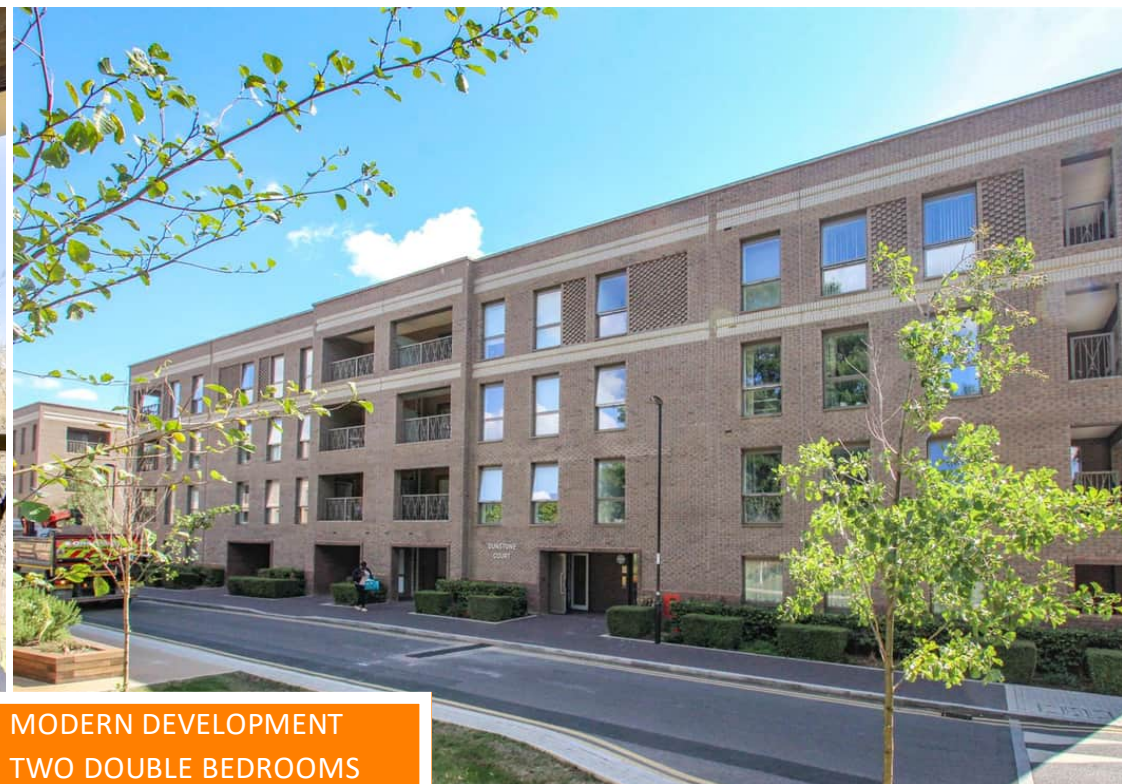
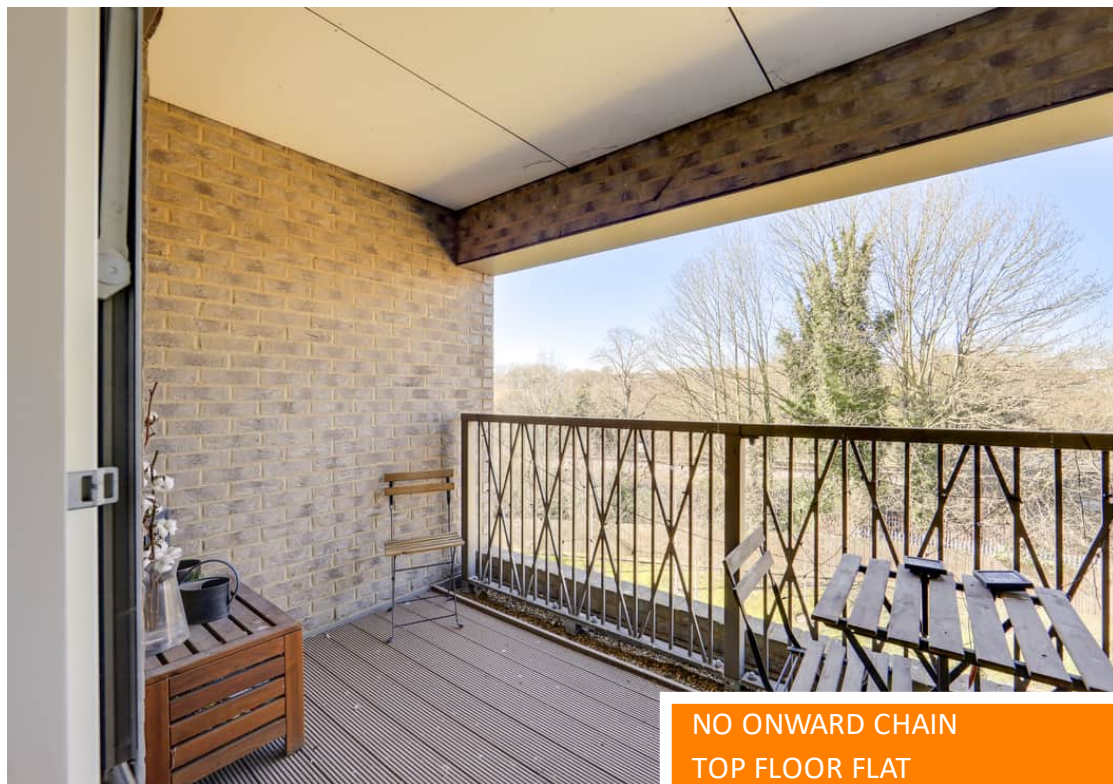
Drawn for Stanfords Sales & Lettings

This floorplan is for illustrative purposes only. Whilst every effort has been made to ensure the accuracy of the plan, the dimensions and total area are approximated only and should not be relied upon.

Like what you see?

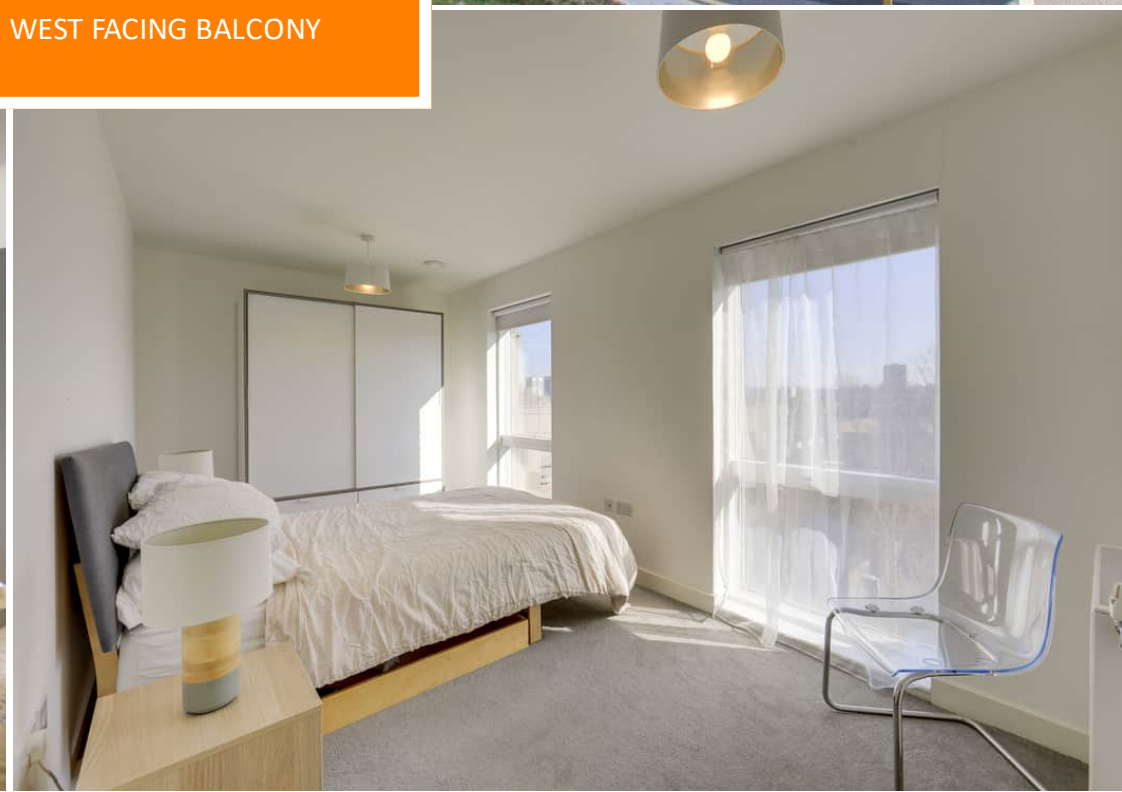
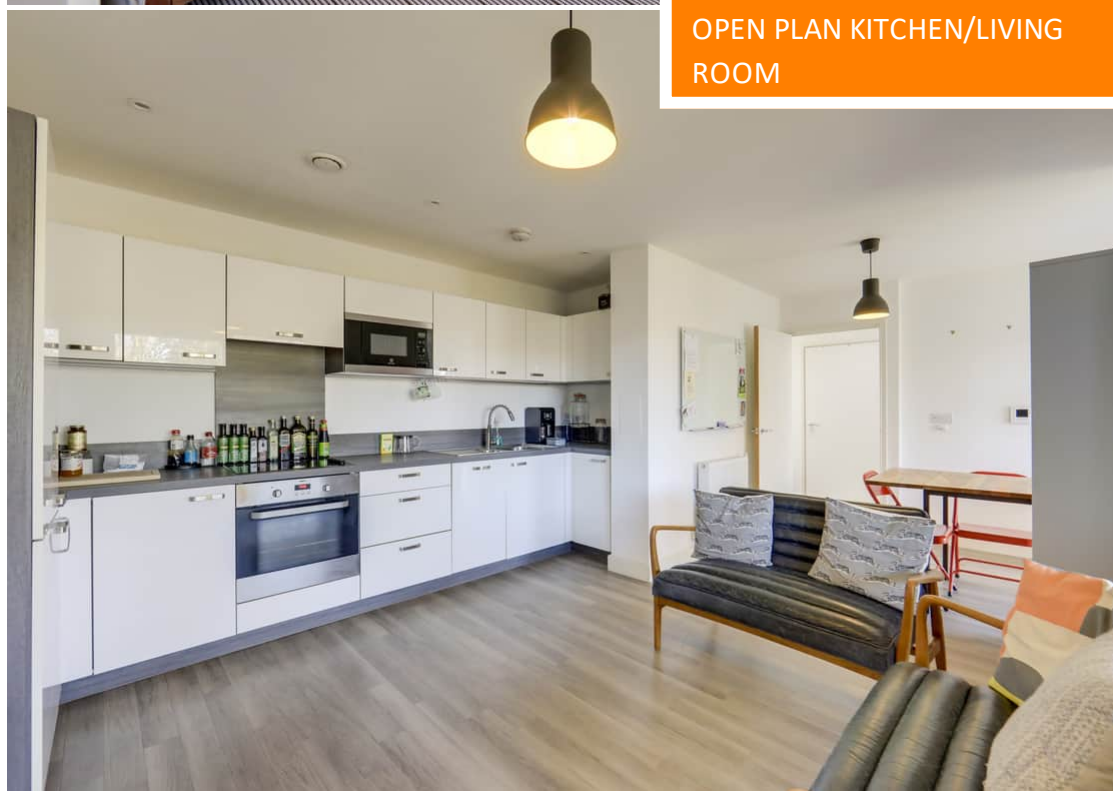
Call 020 8690 3656 or email us at catford@stanfordestates.london to arrange a viewing or request further information

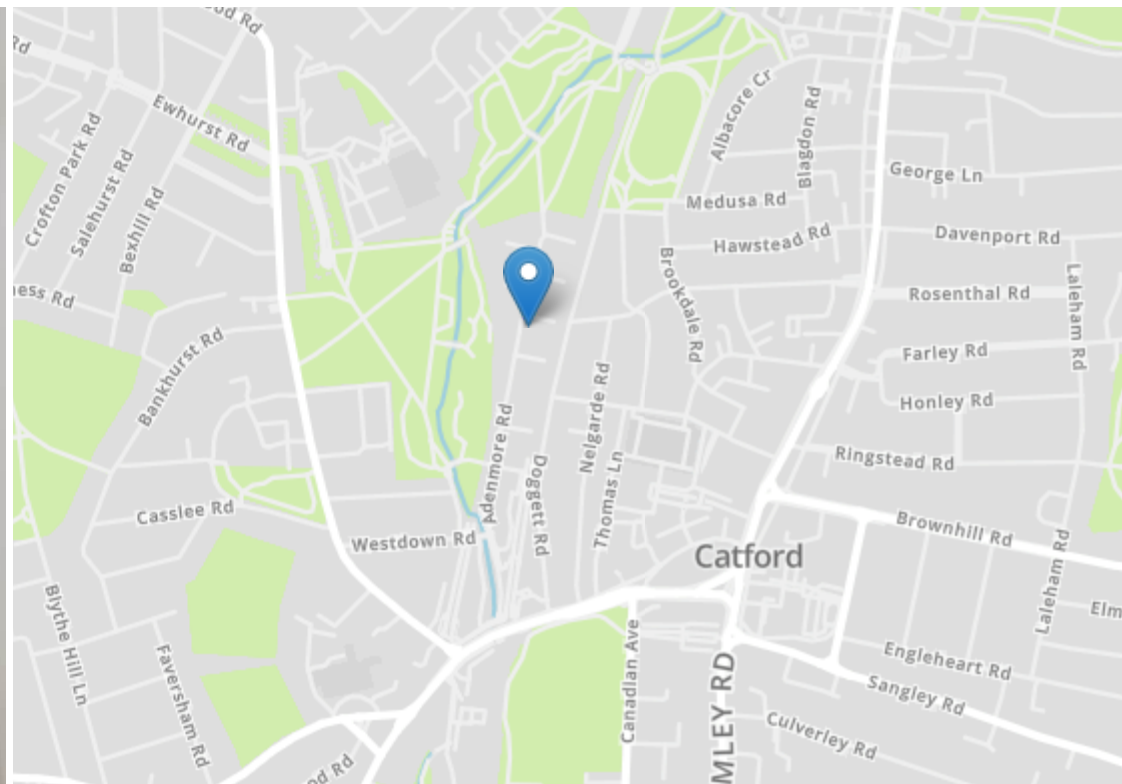
www.stanfordestates.london



NO ONWARD CHAIN
TOP FLOOR FLAT
OPEN PLAN KITCHEN/LIVING
ROOM

MODERN DEVELOPMENT
TWO DOUBLE BEDROOMS
WEST FACING BALCONY
ROOM





Energy Efficiency Rating		
	Current	Potential
Very energy efficient - lower running costs		
(92+) A		
(81-91) B		
(69-80) C		
(55-68) D		
(39-54) E		
(21-38) F		
(1-20) G		
Not energy efficient - higher running costs		
	83	83
EU Directive 2002/91/EC		
England, Scotland & Wales		



Robert Stanford Estates property particulars are produced in accordance with the Consumer Rights Act (2015) and should not be construed as a contract or offer. The contents of these property particulars are to provide a general illustration only and are inconsequential to any decisions to purchase a property. A potential buyer accepts that all representations made by these particulars are made in good faith on behalf of the seller and require verification by a buyers' legal and professional representatives prior to an exchange of contracts. We offer no guarantees for any structural component, service or appliance and while we make every effort to take accurate measurements and distances, they are illustrative only. Any reliance you place on information within these particulars is therefore strictly at your own risk.