



Trewenna Drive, Potters Bar, Hertfordshire, EN6 5JL

£650,000

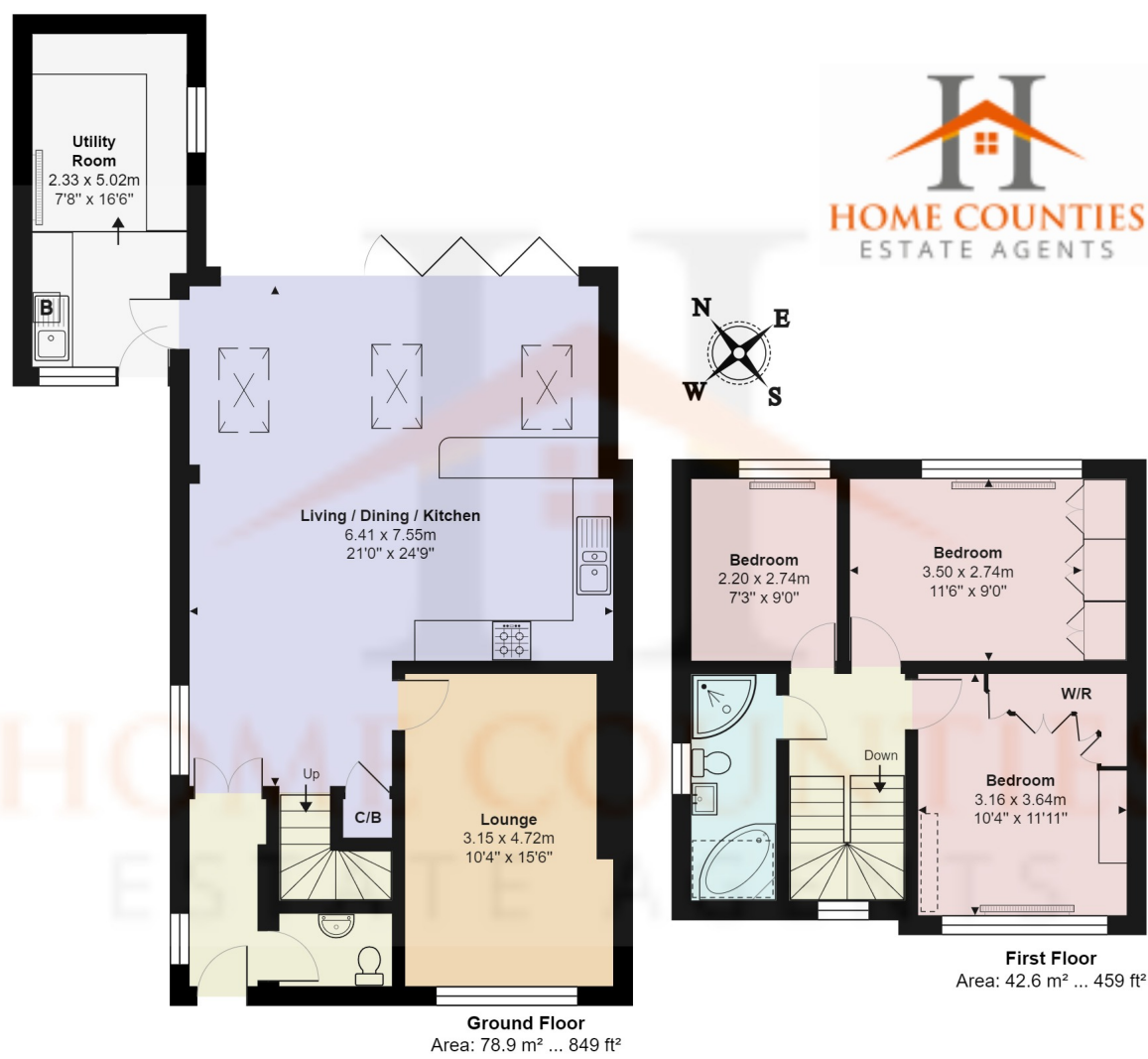
- **SUPERB THREE BEDROOM HOME**
- **FLOOR TO CEILING BI-FOLDING DOORS**
- **LARGE UTILITY ROOM**
- **PRIVATE REAR GARDEN**
- **QUIET RESIDENTIAL ROAD**
- **OPEN PLAN LOUNGE KITCHEN DINER**
- **DOWNSTAIRS WC**
- **EXCELLENT DECORATIVE ORDER THROUGHOUT**
- **OFF STREET PARKING X 2**
- **CLOSE TO SHOPS / RESTAURANTS / TRAIN STATION**

Trewenna Drive, Potters Bar, Hertfordshire, . EN6 5JL

£650,000 Freehold

Stunning Extended Three-Bedroom Semi-Detached Home

Nestled on a peaceful turning off Potters Bar High Street, this beautifully extended three-bedroom semi-detached home offers an unbeatable combination of modern living and convenience. With an array of shops, restaurants, and Potters Bar Mainline Station just a 20-minute walk away, this home is perfectly situated for families and professionals alike.



Trewenna Drive, Hertfordshire EN6

Total Area: 121.5 m² ... 1308 ft²

All measurements are approximate and for display purposes only

