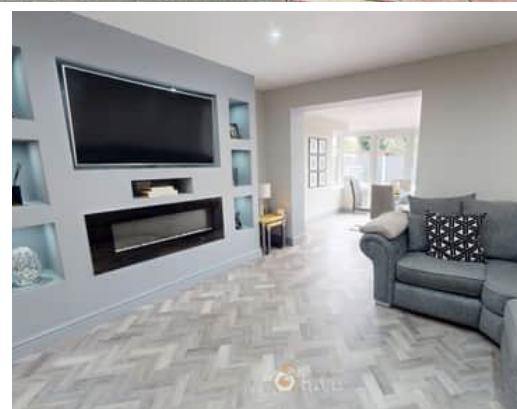


2 Bedroom(s), Semi-Detached House, Freehold

Brampton Lane, Armthorpe, Doncaster.



- 3D Virtual Tour Available
- Modern Lounge Diner
- Playroom/Office
- Driveway and Garage
- Popular Location in Armthorpe

- Beautifully Presented Two Bedroom Semi Detached Home
- Kitchen
- Family Bathroom
- Rear Enclosed Garden
- Local Amenities, Transport Links and Schools

£190,000
For Sale

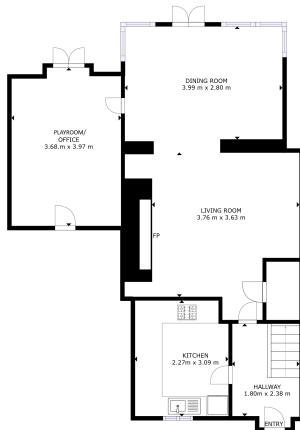
Book your viewing today Tel: 01302 247754

Owner's View

Spacious 2 bedroom semi detached house, in a prime location, near shops and schools quiet and friendly area. 2 double bedrooms, spacious modernised living/dining space with the added bonus of play room which could be used as a multi purpose room with integrated garage. Good sized garden with artificial grass and Indian stone pathing, not overlooked. CCTV installed on the front of the property.

Ground Floor

Floor Plan



FLOOR 1

GRATED INTERNAL AREA
FLOOR 1: 10.41m x 10.00m = 104.10 sq. ft.
TOTAL: 63 sq. ft.

SIZES AND DIMENSIONS ARE APPROXIMATE. ACTUAL MAY VARY.

Matterport

Entry



Kitchen

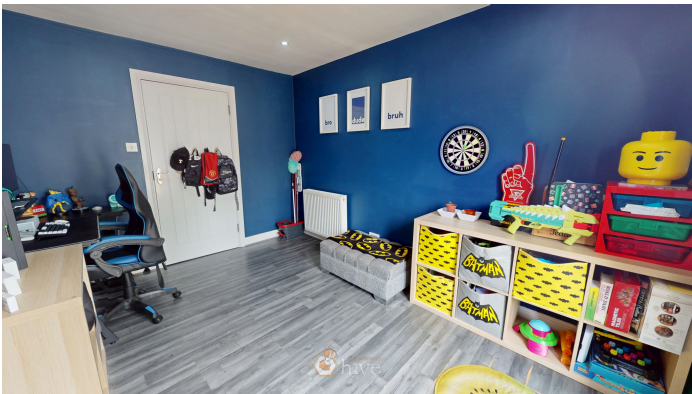
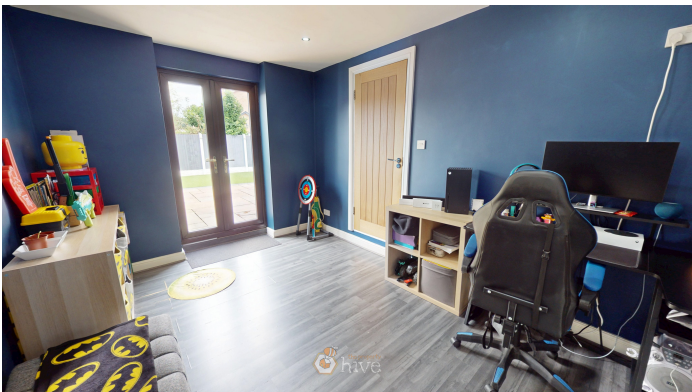


Lounge Diner



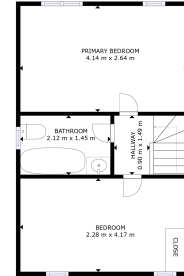


Play Room



First Floor

Floor Plan

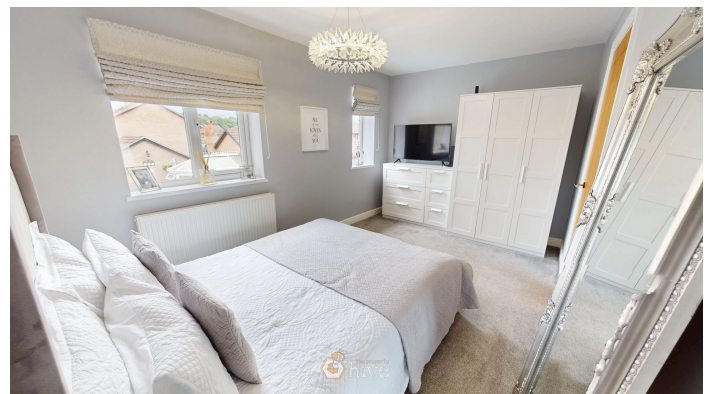


FLOOR 2

GRAND INTERNAL AREA
FLOOR 1: 64 m², FLOOR 2: 20 m²
TOTAL: 84 m²
SIZES AND CORRESPONDING TOTALS ARE APPROXIMATE. ACTUAL MAY VARY.

Matterport

Master Bedroom



Bedroom



Family Bathroom



Externals

Front Aspect



Rear Garden



Property Information

Council Tax Band - A

Utilities - Mains Gas, Mains Electricity, Mains Water

Water Meter - No

Tenure - Freehold

Solar Panels - No

Space Heating System - Gas Boiler with radiators



Approximate Heating System Installation Date -

Water Heating System - Gas boiler (Combi)

Approximate Water Heating Installation Date -

Boiler Location - Garage loft

Approximate Electrical System Installation Date -

Permanent Loft Ladder - No

Loft Insulation - Yes

Loft Boarded out - No

Whilst every effort is made to ensure that the information contained in these particulars is reliable, they do not constitute or form part of an offer or any contract. The Property Hive accept no liability for the accuracy of the contents, and therefore they should be independently verified by prospective buyers or tenants before agreeing an offer. All measurements provided are approximate and should be verified before exchange of contracts. No appliances, fixtures or fittings have been tested and should be checked by the buyer before exchange of contracts to ensure they are in good working order.

Energy Performance Certificate

