



13 Salisbury Road, Bexhill-on-Sea, East Sussex  
, TN40 2AD

£285,000

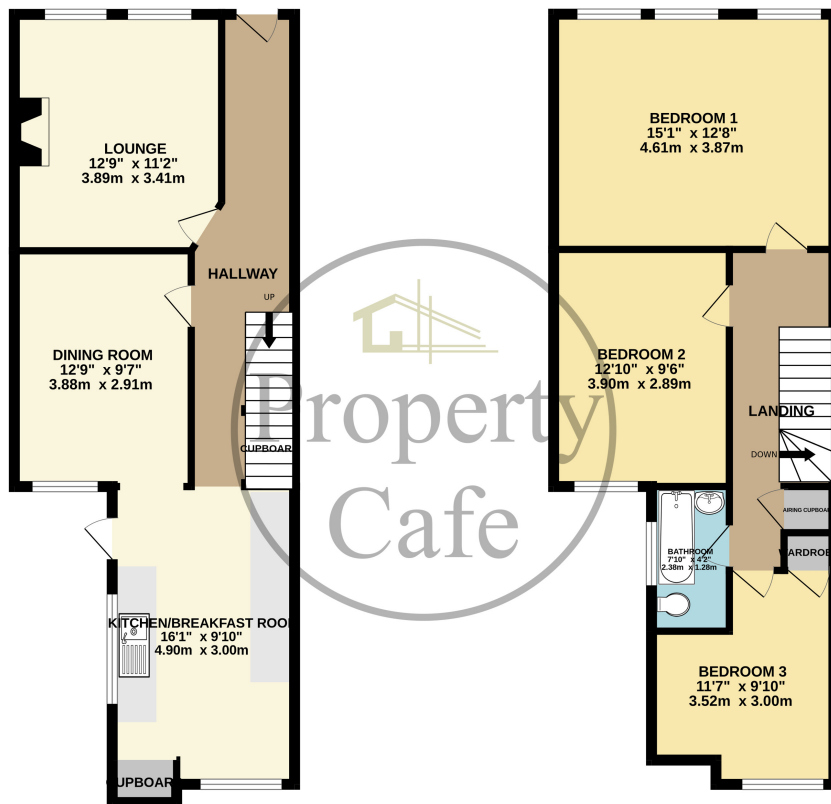


- Mid Terrace House For Sale
- Three Well Proportioned Bedrooms
- Modern Fitted Bathroom
- Lounge & Separate Dining Room
- Modern Fitted Kitchen
- Private Rear Garden
- Well Presented & Neutrally Decorated Throughout
- Gas Central Heated & Double Glazed
- Popular Location Close To Town Centre
- Sold With No Onward Chain
- Viewing Highly Recommended



GROUND FLOOR  
541 sq.ft. (50.3 sq.m.) approx.

1ST FLOOR  
539 sq.ft. (50.1 sq.m.) approx.



TOTAL FLOOR AREA: 1081 sq.ft. (100.4 sq.m.) approx.

Whilst every attempt has been made to ensure the accuracy of the floorplan contained here, measurements of doors, windows, rooms and any other items are approximate and no responsibility is taken for any error, omission or mis-statement. This plan is for illustrative purposes only and should be used as such by any prospective purchaser. The services, systems and appliances shown have not been tested and no guarantee as to their operability or efficiency can be given.  
Made with Metropix ©2024