



Byng Drive, Potters Bar, Hertfordshire, EN6 1UJ

£859,950

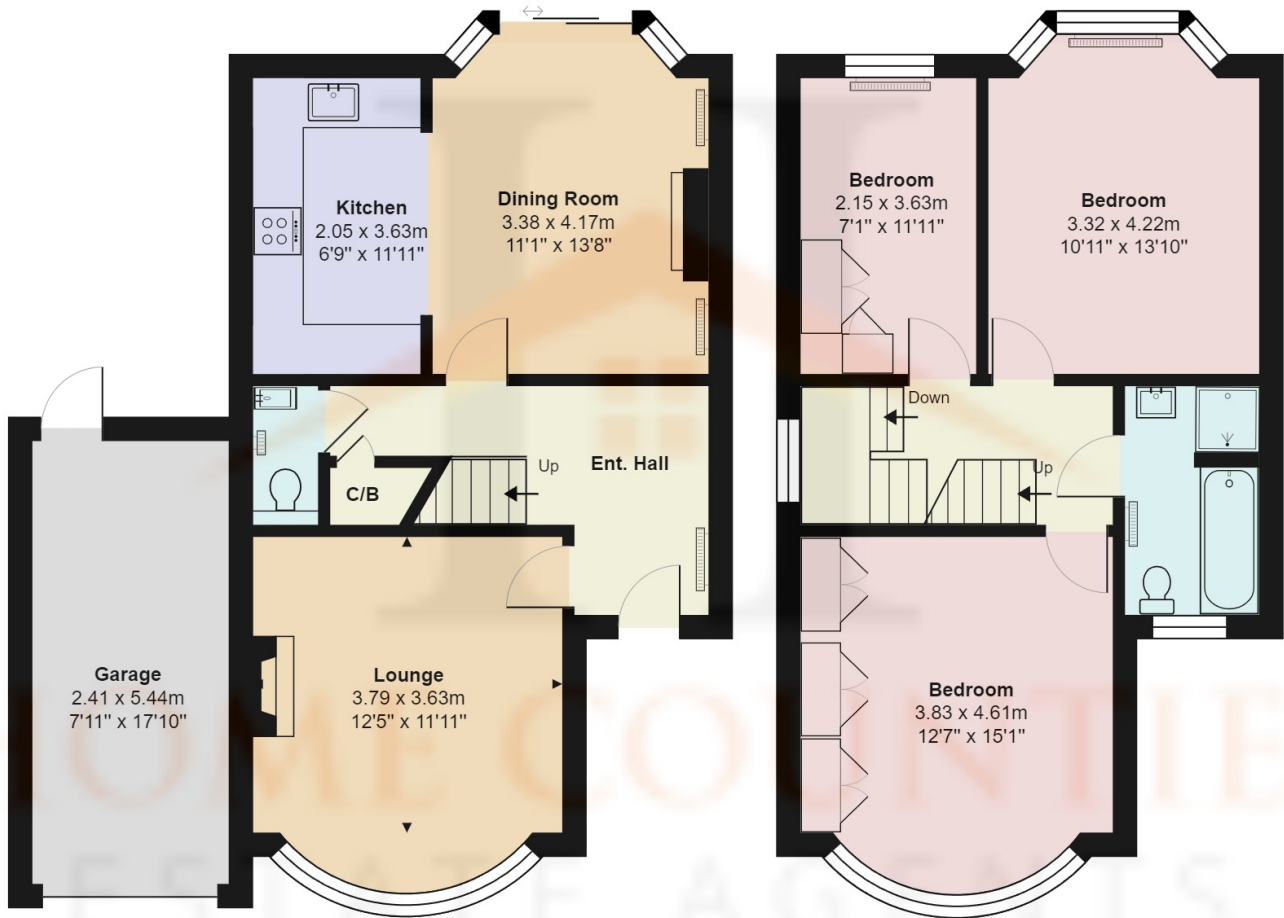
- SOUGHT AFTER LOCATION
- OPEN PLAN KITCHEN / DINING ROOM
- SOUTH FACING PRIVATE GARDEN
- PLANNING PERMISSION GRANTED FOR LOFT AND REAR EXTENSION
- WALKING DISTANCE TO POTTERS BAR MAINLINE STATION
- HALLS ADJOINING
- DOWNSTAIRS TOILET
- CLOSE TO SHOPS / RESTAURANTS / AMENITIES
- NEXT TO PARKFIELD OPENSOURCE
- GOOD SCHOOL CATCHMENT AREA

Byng Drive, Potters Bar, Hertfordshire, . EN6 1UJ

£859,950 Freehold

Situated on one of Potters Bar's most favorable roads is this delightful Three bedroom halls adjoining semi detached family home ideally located just moments from Parkfield Open Space. The home is in excellent decorative condition throughout and features separate lounge to front, downstairs guest toilet, open plan kitchen diner to the rear with modern fitted kitchen with integrated appliances. The first floor consists of three generous sized bedrooms and fully tiled bathroom with bath and shower. There has been a staircase installed in readiness for a loft conversion with planning permission granted for a loft conversion and rear extension.

Externally the property has off street parking for one car, garage to the side and a South Facing Garden.



Ground Floor
Area: 64.3 m² ... 692 ft²

First Floor
Area: 50.0 m² ... 538 ft²

Byng Drive, Hertfordshire EN6

Total Area: 114.3 m² ... 1230 ft²

All measurements are approximate and for display purposes only

