

LEDBURY ROAD, HR1 1RQ

£325,000

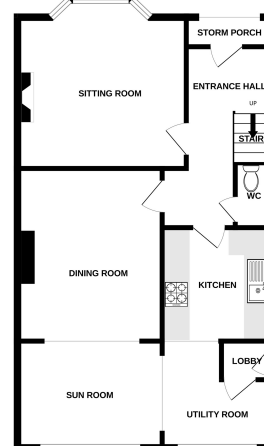


Key Features

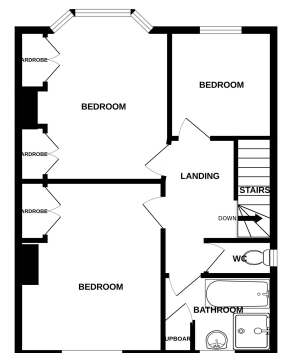
- ✓ No onward chain
- ✓ Extended 3 bedroom semi detached property
- ✓ 2 reception rooms
- ✓ Extended single garage
- ✓ Garden and Ample Parking.



GROUND FLOOR
684 sq.ft. (63.0 sq.m.) approx.



1ST FLOOR
515 sq.ft. (47.8 sq.m.) approx.



TOTAL FLOOR AREA: 1199 sq.ft. (111.4 sq.m.) approx.
Made with Merge ©2024