



25 Great Crescent, Newbury, Berkshire. RG14 7TB.

£420,000 Freehold



- Six years old
- Detached garage
- Off street parking for several cars
- Low maintenance garden
- West facing garden
- No onward chain
- Close to Newbury racecourse train station
- Close to Greenham common
- Elevated views over Newbury

A beautifully presented three-bedroom semi-detached home located in a quiet and desirable development on the south side of Newbury. This modern property offers a perfect blend of comfort, practicality, and style—ideal for families, professionals, or anyone looking to enjoy a well-connected yet peaceful lifestyle.

Step inside to discover a bright and spacious interior, featuring a welcoming entrance hall, a convenient downstairs WC, and a well-appointed kitchen with ample storage and workspace. The heart of the home is the generous lounge/diner, perfect for both relaxing and entertaining, with French doors opening onto a west-facing rear garden—mainly laid to tiles for easy maintenance and year-round enjoyment.

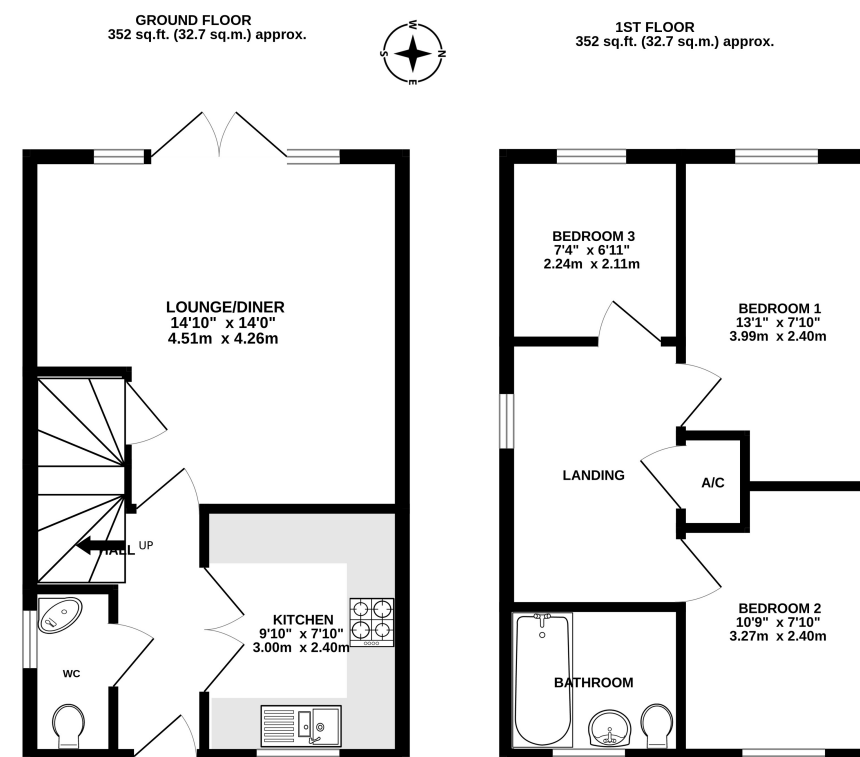
Upstairs, you'll find three good-sized bedrooms, two of which benefit from built-in wardrobes, and a sleek, modern family bathroom. The property also boasts a detached garage and driveway parking, providing plenty of space for vehicles and storage.

Located close to scenic woodland walks and Greenham Common, and just a short drive from Newbury town centre and the mainline train station, this home offers the best of both worlds—tranquil surroundings with excellent transport links.





- **Electricity:** Mains Supply.
- **Heating:** Gas Central.
- **Water:** Mains Supply.
- **Sewerage:** None.
- **Council Tax Band:** D



ABOUT US: We are a well-established, independent and highly-regarded, family run estate agency based in Newbury. Offering a bespoke service to suit your individual needs, we get results.

14 The Broadway Newbury Berkshire RG14 1BA
sales@cricketts.co.uk www.cricketts.co.uk T:01635 43333

Registered in England Registration No. 04637744 Vat No.811609452

