



Alexander Jacob  
estate agents & company



**Eastfield Park**  
Tuxford, Newark

**Offers Over £20,000**

**Property & Estates Consulting**  
11 Grove Street, DN22 6JR

01777 566400  
[www.alexanderjacob.co.uk](http://www.alexanderjacob.co.uk)

# Eastfield Park Tuxford, Newark

Well Proportioned ONE BEDROOM Park Home

## Property Overview

- Exclusively Available to the Semi-Retired & Retired on a Development of Just 42 Park Homes
- Spacious Driveway Accommodating Several Vehicles
- Partially Enclosed Low Maintenance Garden & Handy Garden Shed
- Located in a Quiet, Secure Setting on the Edge of the Highly Regarded Market Town of Tuxford
- Easy Access to Local Amenities via Regular Bus Routes

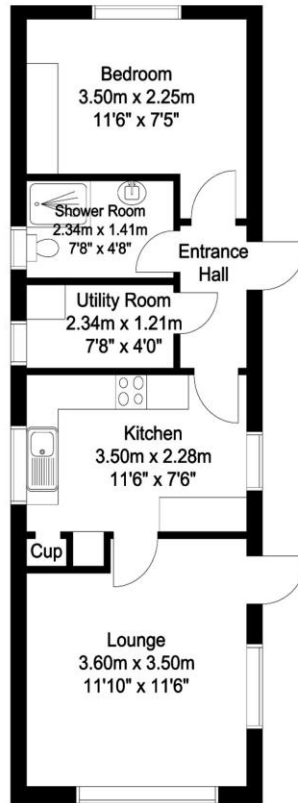


We are pleased to offer for sale this well proportioned ONE BEDROOM park home, positioned on a rural development of just 42 park homes, exclusively available to the semi-retired and retired. Measuring approximately 419.8 sq ft., the single storey living accommodation briefly comprises of entrance hall, kitchen, lounge, utility room, double bedroom and shower room. Outside sees a partially enclosed low maintenance garden, a spacious driveway accommodating several vehicles and a handy garden shed. Located in a quiet, secure setting on the edge of the highly regarded market town of Tuxford, the development is surrounded by open countryside, with a bus stop at the park entrance providing regular bus routes to Tuxford town centre situated one mile away, and settings further afield. Local amenities include a Post Office, convenience store, supermarket, chemist, Doctor's surgery, ladies and gents hairdressing, a butchers and a bakers.

*Road links are served by the A1 & A57 which offer greater transport links throughout the UK. Train stations are located in Retford & Worksop, providing direct lines to King's Cross in less than 90 minutes at selected times.*



Ground Floor  
39 sq m/419.79 sq ft  
Approx.



Whilst every attempt has been made to ensure the accuracy of the floor plan contained here, no responsibility is taken for incorrect measurements of doors, windows, appliances and rooms or any error, omission or misstatement. Exterior and interior walls are drawn to scale based on interior measurements. Any figure given is for initial guidance only and should not be relied on as a basis of valuation. The plans are for marketing purposes only and should only be used as such. No guarantee is given on the accuracy of the total square footage/ meterage if quoted on this plan..  
CP Property Services @2023

## Selling your home?

If you are considering selling your home please contact us today for your no obligation free market appraisal.

Our dedicated and friendly team will assist you 6 days a week. Get in touch today!

Tel: 01777 566400



### Property & Estates Consulting

11 Grove Street, Retford, DN22 6JR



01777 566400

[www.alexanderjacob.co.uk](http://www.alexanderjacob.co.uk)

IMPORTANT: we would like to inform prospective purchasers that these sales particulars have been prepared as a general guide only. A detailed survey has not been carried out, nor the services, appliances and fittings tested. Room sizes should not be relied upon for furnishing purposes and are approximate. If floor plans are included, they are for guidance only and illustration purposes only and may not be to scale. If there are any important matters likely to affect your decision to buy, please contact us before viewing the property.