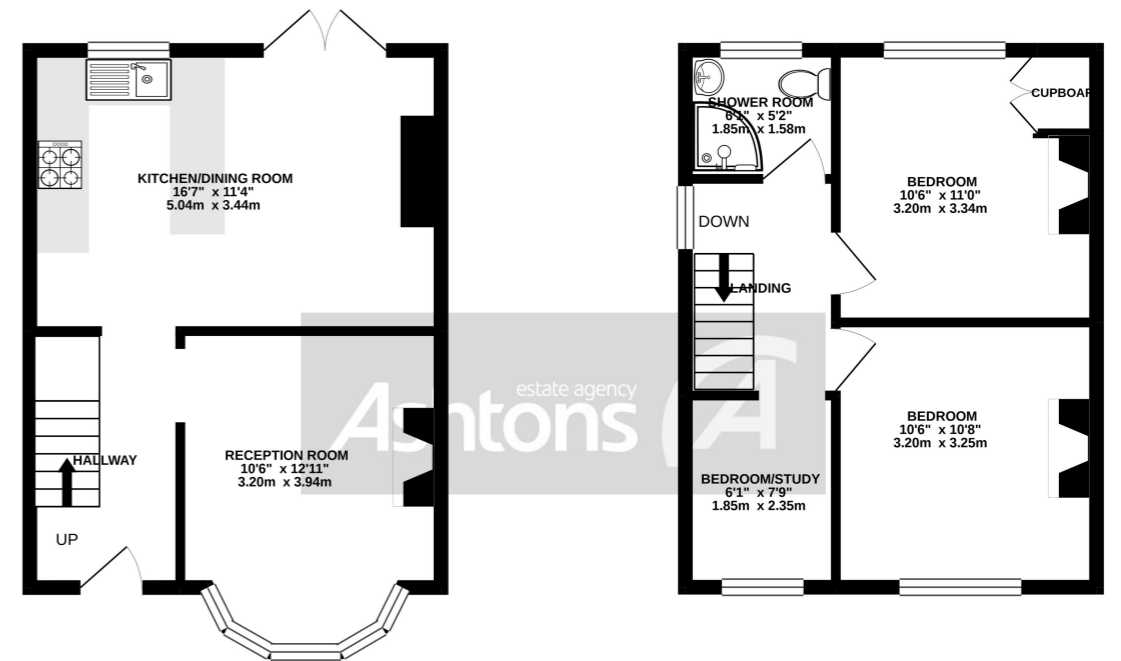




GROUND FLOOR
361 sq.ft. (33.6 sq.m.) approx.

1ST FLOOR
345 sq.ft. (32.0 sq.m.) approx.



TOTAL FLOOR AREA: 706 sq.ft. (65.6 sq.m.) approx.
Whilst every attempt has been made to ensure the accuracy of the floorplan contained here, measurements of doors, windows, rooms and any other items are approximate and no responsibility is taken for any error, omission or mis-statement. This plan is for illustrative purposes only and should be used as such by any prospective purchaser. The services, systems and appliances shown have not been tested and no guarantee as to their operability or efficiency can be given.
Made with Metropix ©2020

Hewitt Avenue, St Helens. Offers Over £130,000

Three Bedroom Semi Detached | Gardens Both Front & Rear | Ideal Location | Schools Within Walking Distance | Transport Links Nearby | Shops & Eateries Within The Area | Parking |

