

FOR
SALE



15 Wenlock Close, Belmont, Hereford HR2 7UZ

£289,950 - Freehold

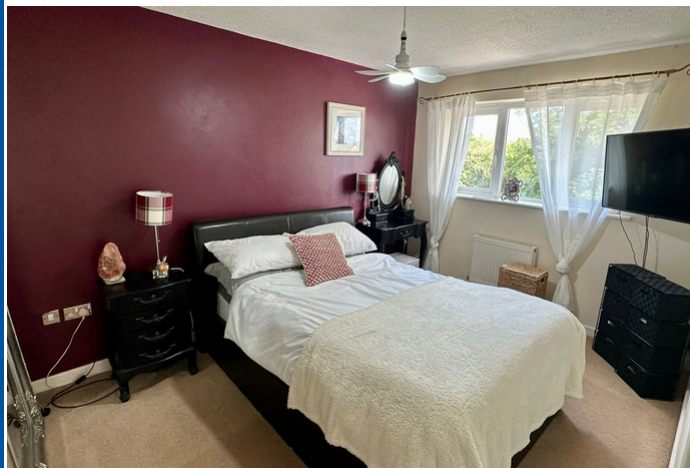
22, Broad Street, Hereford, HR4 9AP 01432 355455 hereford@flintandcook.co.uk

PROPERTY SUMMARY

Occupying a peaceful cul-de-sac position on the southern outskirts of the city, a modern 3 bedroom link detached house offering ideal family or retirement accommodation. The property has the added benefit of gas central heating, double glazing, private rear garden, ample off road parking and we recommend an internal inspection.

POINTS OF INTEREST

- Southern outskirts of the City
- Modern 3 bedroom link detached house
- Lounge, kitchen/diner & downstairs WC
- Private rear garden and ample parking
- Ideal for family or retirement
- Must be viewed



ROOM DESCRIPTIONS

Reception Hall

With radiator, wood strip flooring, central heating thermostat, carpeted staircase with hand rail to the first floor and partially glazed door through to the

Lounge

With fitted carpet, coved ceiling, radiator, double glazed bay window to the front aspect with blinds, feature fireplace with hearth, display mantle and built in gas coal effect fire and partially glazed door to the

Kitchen/Dining Room

Dining Area

With tiled floor, radiator, coved ceiling, double glazed window over looking the rear garden

Kitchen

With a range of wall and base cupboards, ample work surfaces with splash backs, single drainer sink unit with mixer tap over, tiled floor, breakfast bar, double glazed window with blind overlooking the rear garden, coved ceiling, display shelf, space and plumbing for washing machine, built in 4 ring gas hob with cooker hood over, partially panelled walling, recycling bins, corner carousel cupboard, door to the store room and door to the

Inner Lobby

With storage space and folding door to the

Downstairs Cloakroom

With low flush WC, wash hand basin with tiled splash back and tiled floor.

Large Store Room

Originally part of the garage with fitted carpet, radiator, double glazed double doors to the rear garden and an internal door to a useful

Store/Utility Room

With power and light points, space for a fridge/freezer and a double glazed window and door to the front driveway.

First Floor Landing

With fitted carpet, double glazed side window with blind, radiator, access hatch with pull down ladder to the loft space and built in airing cupboard also housing the upgraded Worcester gas central heating boiler.

Bedroom 1

With fitted carpet, radiator, built in double wardrobe and double glazed window to the rear.

Bedroom 2

With fitted carpet, radiator, double glazed window to the front aspect and built in double wardrobe.

Bedroom 3

With fitted carpet, radiator and double glazed window to the rear.

Shower Room

With suite comprising large double shower with rainwater style shower head and glazed sliding door, pedestal wash hand basin, low flush WC, laminate flooring, coved ceiling, partially panelled walling, double glazed window with blind, shaver socket ,extractor fan and ladder style towel rail/radiator.

Outside

To the front of the property there is a large driveway providing ample parking facilities bordered by flowers and shrubs.

The rear garden has been landscaped for easy maintenance with a central area laid to grass and surrounded by chippings and all enclosed by high fencing to maintain privacy.

There is a useful outside tap and

Detached Garden Room

Of timber construction this offers flexible space with power and light points, currently divided into two but could offer the perfect home gym/office space or garden retreat.

Services

Mains water, electricity, drainage and gas are connected. Gas-fired central heating.

Outgoings

Council tax band D - £2,409 payable for 2025/2026

Water and drainage rates are payable.

Directions

Proceed south out of Hereford city on the A465 (Belmont) Road, at the Tesco roundabout take the third exit onto Northolme Road, 1st left into Stanbrook Road, 3rd left into Oulton Ave and after approximately 800 yards Wenlock Close is on your left hand side.

Viewing Arrangements

Strictly by appointment through the Agent, Flint & Cook, Hereford (01432) 355455.

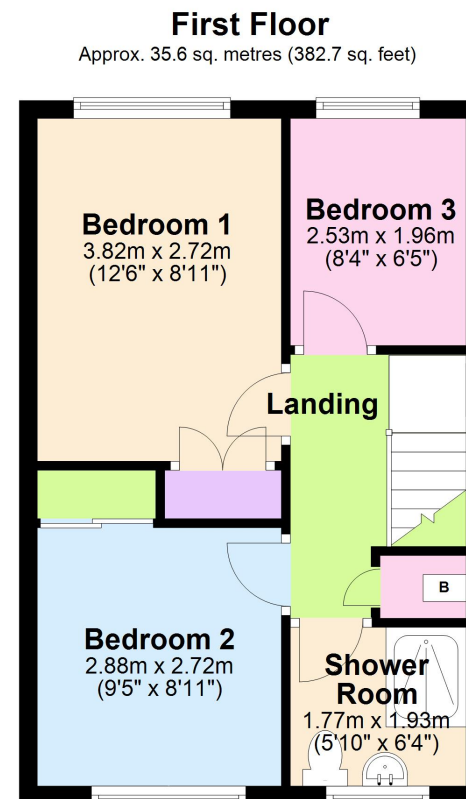
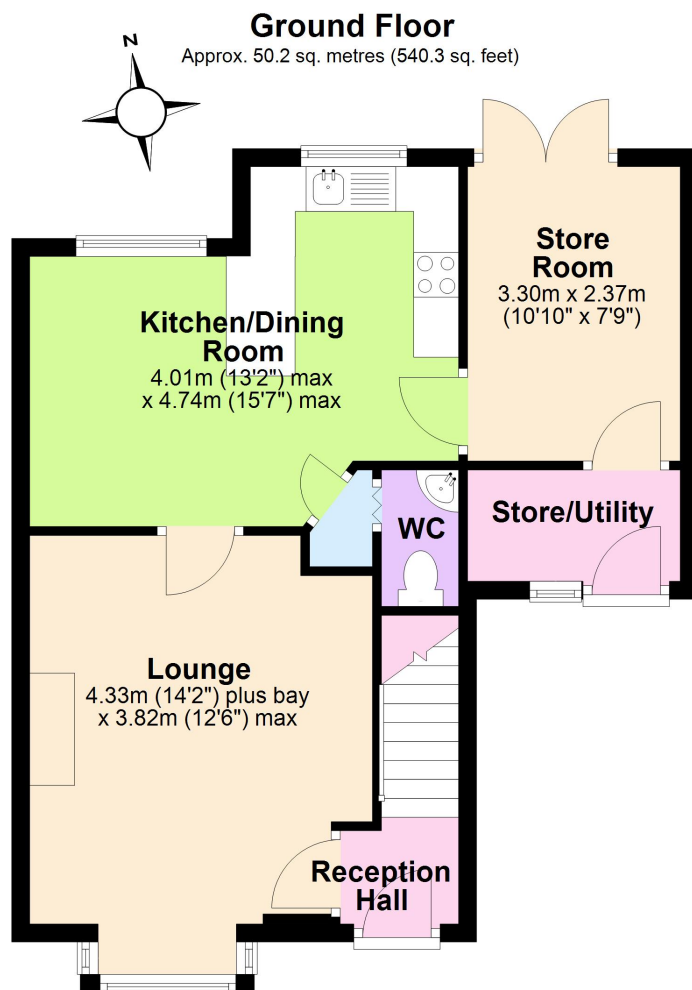
Opening Hours

Monday - Friday 9.00 am - 5.30 pm

Saturday 9.00 am - 1.00 pm

Money Laundering Regulations

Prospective purchasers will be asked to produce identification, address verification and proof of funds at the time of making an offer.



Total area: approx. 85.8 sq. metres (923.1 sq. feet)
15 Wenlock Close, Hereford

These particulars are prepared for the guidance only of prospective purchasers. They are intended to give a fair and overall description of the property and do not constitute the whole or any part of an offer or contract. Any information contained herein (whether in text, plans or photographs) is given in good faith but should not be relied upon as being a statement or representation of fact. Any plans provided by the agents and/or with the sales particulars are intended for guidance purposes only; we cannot guarantee the accuracy and scale of any plans, and they do not form any part of the sales contract. Nothing in these particulars shall be deemed to be a statement that the property is in good condition or otherwise nor that any services or facilities are in good working order. Any movable contents, fixtures and fittings, (whether wired or not) referred to in these property particulars (including any shown in the photographs) are, unless the particulars say otherwise, excluded from the sale. In the event that the buyer proposes to purchase any movable contents or include them in any offer for the property, the buyer cannot in any respect imply any such inclusion from the property particulars. Any areas, measurements or distances referred to herein are approximate only and may be subject to amendment. It should not be assumed that the property has all necessary planning, building regulation or other consents and these matters must be verified by an intending purchaser. The information in these particulars is given without responsibility on the part of the agents or their clients and neither the agents nor their employees have any authority to make or give any representations or warranties whatever in relation to this property.

Flint & Cook Privacy Statement: We take your privacy very seriously. Your data will not be shared with any other parties without your express permission. Our Data protection Policy can be read in full on the Flint & Cook website, www.flintandcook.co.uk

Energy Efficiency Rating		
	Current	Potential
Very energy efficient - lower running costs		
(92+) A		
(81-91) B		
(69-80) C		
(55-68) D		
(39-54) E		
(21-38) F		
(1-20) G		
Not energy efficient - higher running costs		
England, Scotland & Wales	72	77
EU Directive 2002/91/EC		