

FOR SALE

£265,000

Holmesway, Pensby, Wirral. CH61 5XJ



No Chain! Situated on the quiet Holmesway in Pensby is this delightful three bedroom semi-detached residence which is located nearby to excellent local amenities such as Transport Links, Shops and reputable Schools.

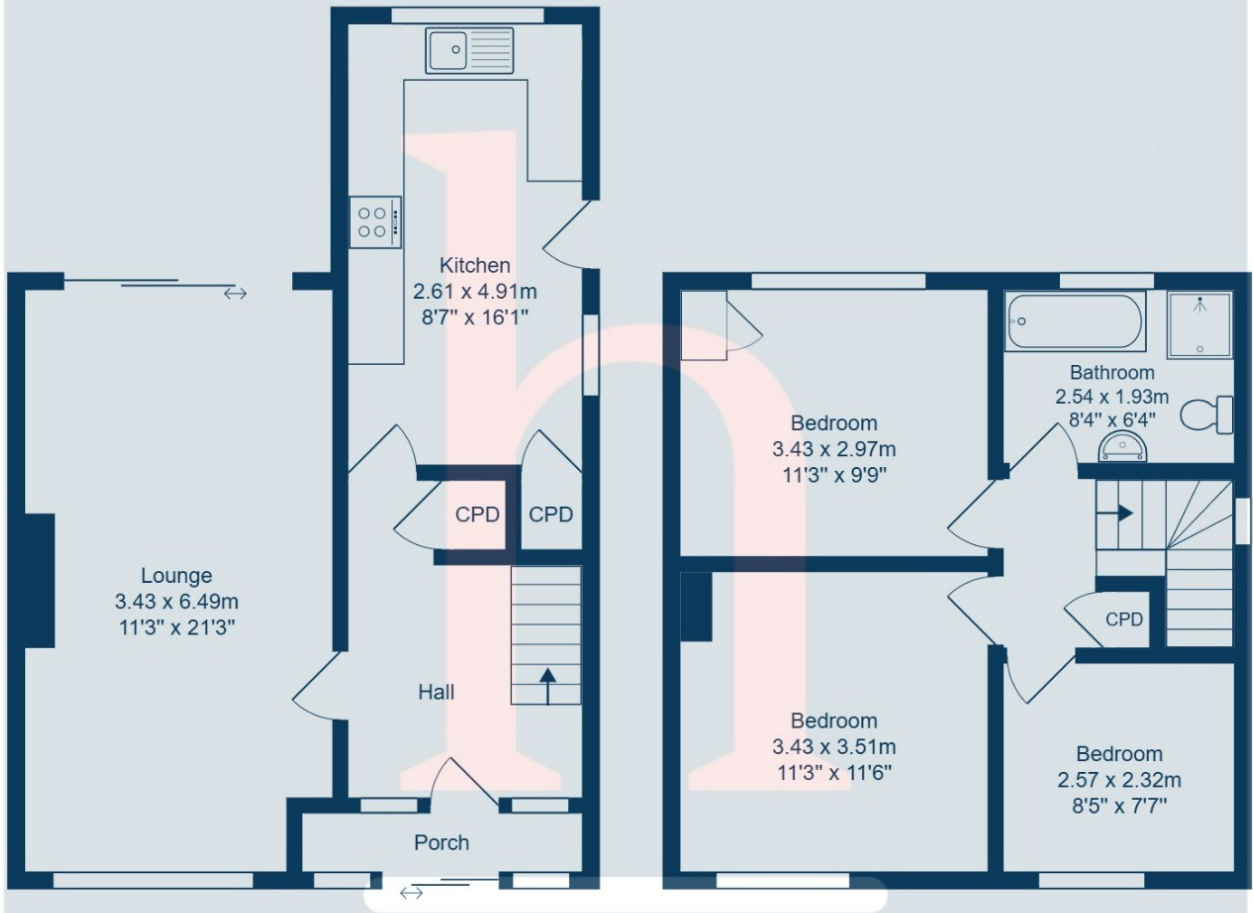
To the ground floor you are welcomed into an entrance porch which leads you through to the spacious hallway. The lounge is well-proportioned and is drenched in natural light as it benefits from dual aspect windows, whilst the kitchen is generously sized with space for a dining table and an array of wall and base units.





Ground Floor

1st Floor



Total Area: 88.1 m² ... 948 ft²

All measurements are approximate and for display purposes only.