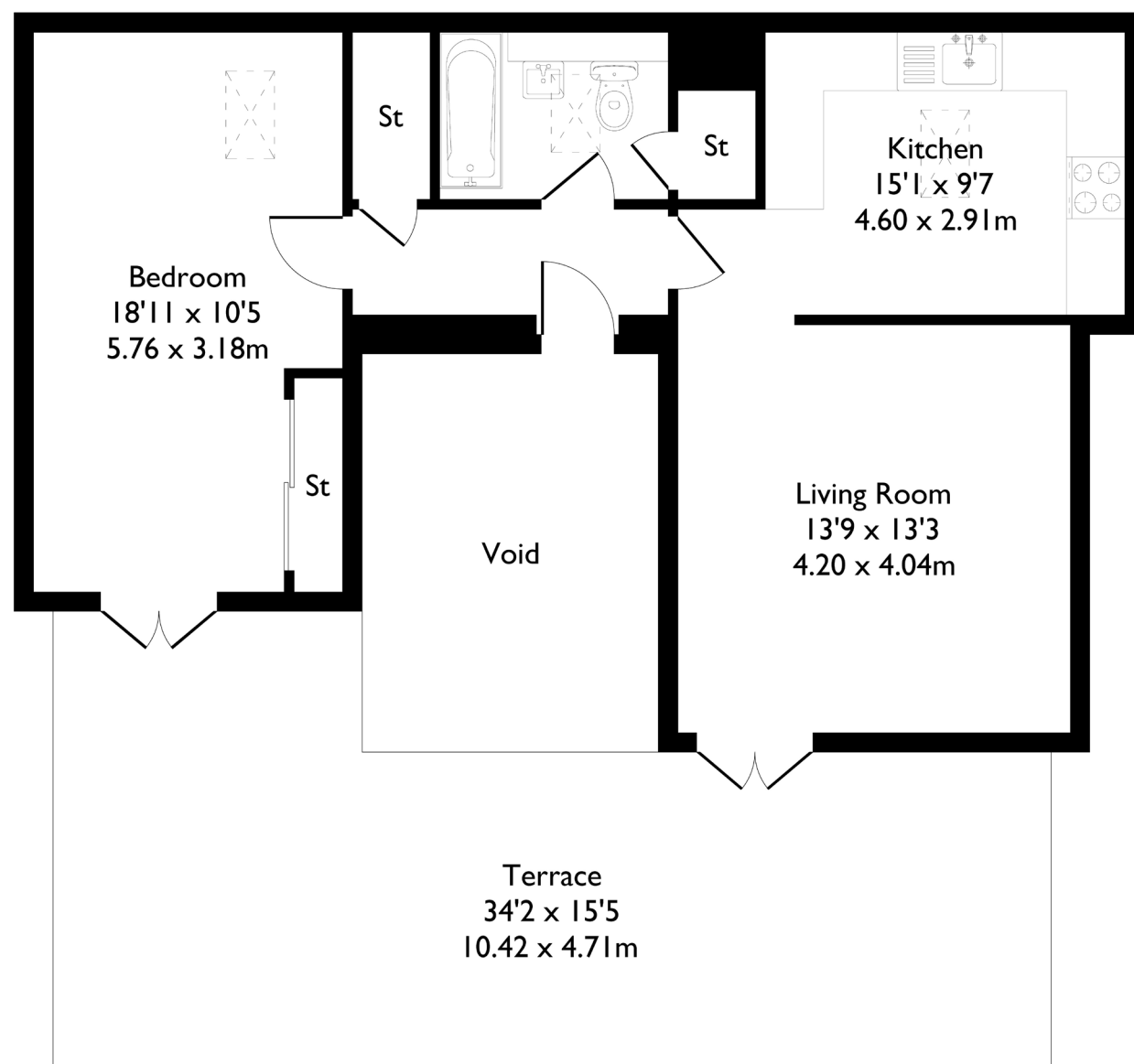
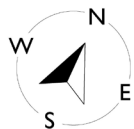


## Hartington House, Hartington Road, London, W13

Approximate Floor Area = 59.1 sq m / 636 sq ft



Fourth Floor



### 1 BEDROOM FLAT

## Hartington Road, W13

Guide Price £465,000

Welcome to this spacious top floor one bedroom penthouse apartment.

As you enter, you're greeted by a generous open plan kitchen and living space that flows seamlessly onto a large private top floor patio — perfect for entertaining or relaxing outdoors. The property features a well sized bathroom with both a bath and shower, skylights throughout that flood the home with natural light, and a large double bedroom with direct access to the patio.

### FEATURES

- One Bedroom
- One Bathroom
- Penthouse Apartment
- Private Top Floor Patio
- Private Parking Space
- Open Plan Kitchen And Living
- West Ealing Station (Elizabeth Line)
- Amenities Nearby
- EPC Rating C



1 BEDROOM FLAT

Hartington Road, W13

Guide Price £465,000

Situated in a fantastic location with amenities right on the doorstep, the property is just a 7-minute walk to West Ealing Station (Elizabeth Line).

This property benefits from excellent bus links to Ealing Broadway, with its wide array of shops, cafés, restaurants, and more.

EPC Rating C

