



2 Cumberland Court, Upper Sea Road,
Bexhill-on-Sea, East Sussex, TN40 1RP

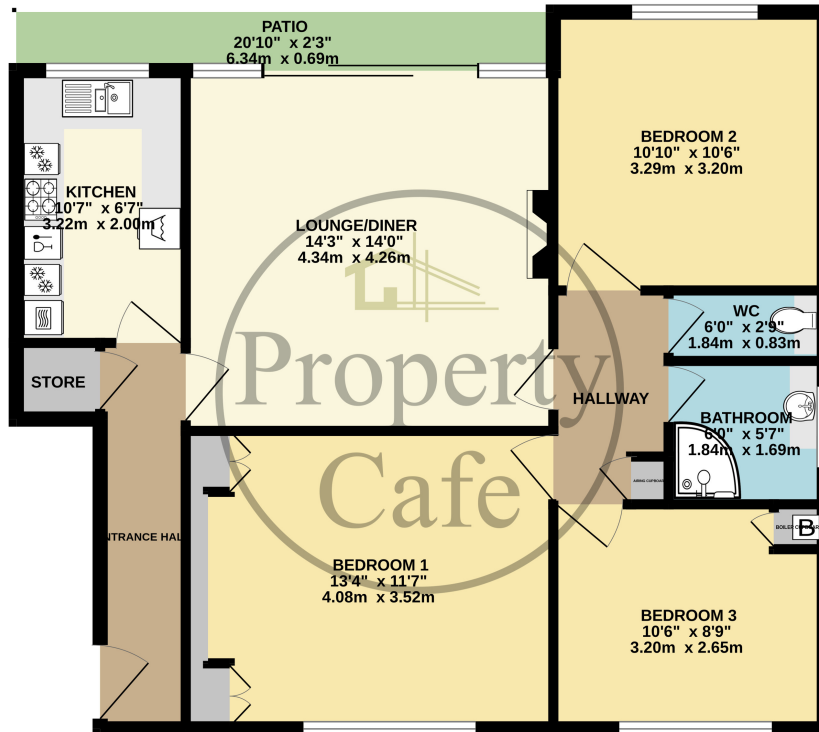
£229,950



- Spacious Ground Floor Apartment
- Three Good Size Bedrooms
- Spacious West Facing Lounge-Diner
- Central Heating & Double Glazing
- Modern Well Equipped Fitted Kitchen
- Separate Cloakroom W.C
- Secure Communal Entrance & Hall
- Off Road Parking To The Rear
- Central Heating & Double Glazed
- Well Kept Communal Grounds
- Convenient Location Close To The Town
- Near To The Station & Seafront
- Offered For Sale With No Chain
- Viewing Highly Recommended
- Call Our Sales Team On 01424 224488



GROUND FLOOR
781 sq.ft. (72.6 sq.m.) approx.



TOTAL FLOOR AREA : 781 sq.ft. (72.6 sq.m.) approx.

Whilst every attempt has been made to ensure the accuracy of the floorplan contained here, measurements of doors, windows, rooms and any other items are approximate and no responsibility is taken for any error, omission or mis-statement. This plan is for illustrative purposes only and should be used as such by any prospective purchaser. The services, systems and appliances shown have not been tested and no guarantee as to their operability or efficiency can be given.
Made with Metropex ©2024

