

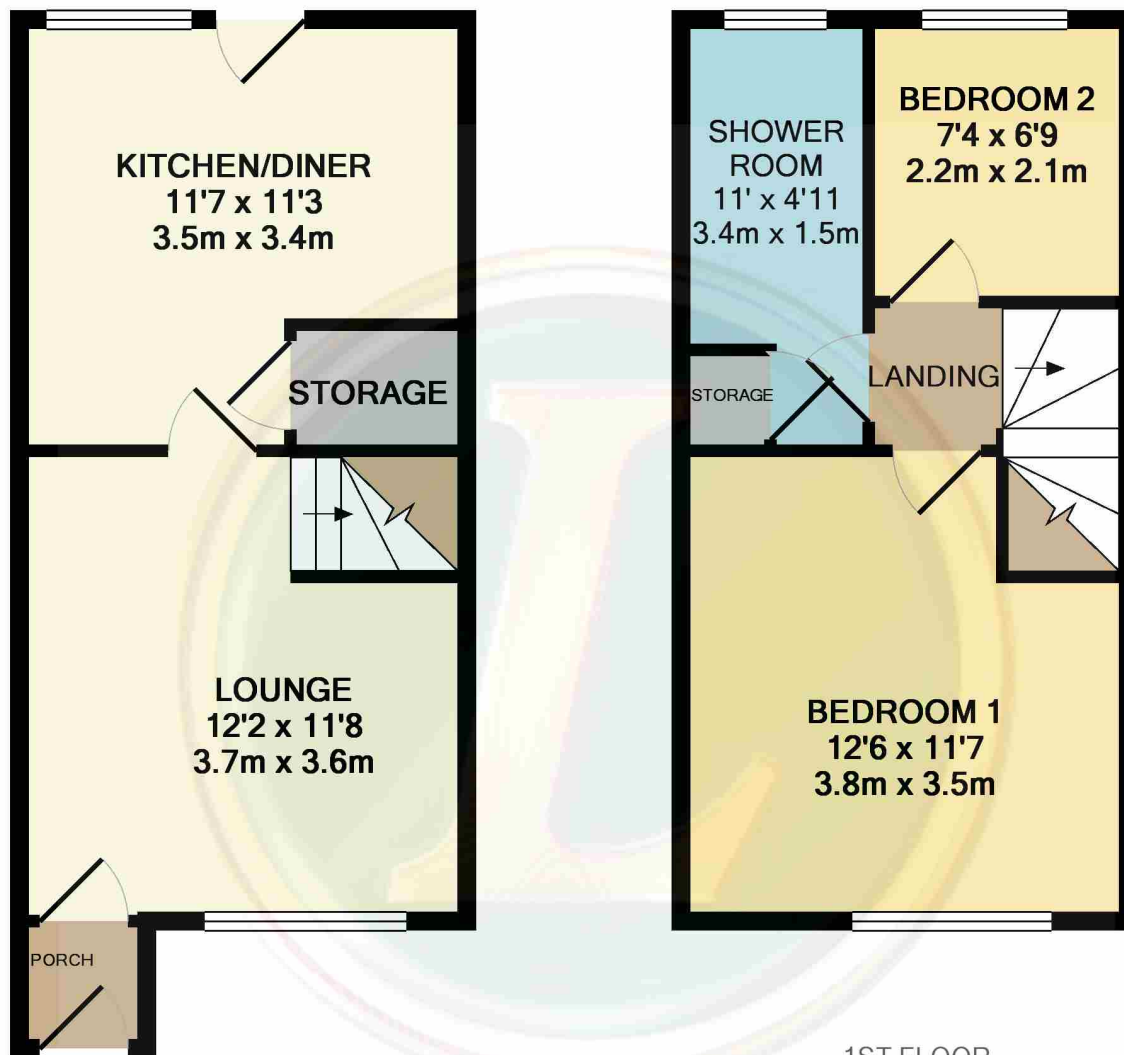


49 Astral Close, Lower Stondon, Henlow, Bedfordshire, SG16 6EL

£259,995

A well presented modern two bedroom property located in a quiet cul-de-sac. The property comprises: Entrance porch which leads to a 12ft lounge, spacious and light kitchen/diner with a large storage cupboard. Upstairs are two bedrooms and a bathroom with large walk in shower. Outside there are gardens to the front and rear as well as an allocated parking space. IDEAL FOR FIRST TIME BUYERS OR INVESTORS.

Lane &
BENNETTS



1ST FLOOR
APPROX. FLOOR
AREA 273 SQ.FT.
(25.4 SQ.M.)

GROUND FLOOR
APPROX. FLOOR
AREA 284 SQ.FT.
(26.4 SQ.M.)

TOTAL APPROX. FLOOR AREA 557 SQ.FT. (51.8 SQ.M.)
Measurements are approximate. Not to scale. Illustrative purposes only
Made with Metropix ©2019

- TWO BEDROOM MID TERRACE HOUSE
- WELL PRESENTED THROUGHOUT
- QUIET CUL-DE-SAC LOCATION
- 12 FT LOUNGE
- SPACIOUS KITCHEN/DINER
- BATHROOM WITH LARGE SHOWER
- FRONT AND REAR GARDENS
- ALLOCATED PARKING SPACE
- CLOSE TO LOCAL AMENITIES
- COUNCIL TAX BAND C & EPC BAND C

