



## 101 Pixmore Way, Letchworth Garden City, Hertfordshire, SG6 3TR

Offers Invited £1,050,000

This rarely available substantial property, new to the sales market offers the discerning client an opportunity to acquire an original Early Garden City property, perfectly located just minutes walk to the town and station (London Kings Cross 28 minutes), sought after private & public schools - St Christopher's, St Francis school for Girls, the Highfield School - as well as a multitude of leisure and sporting facilities.

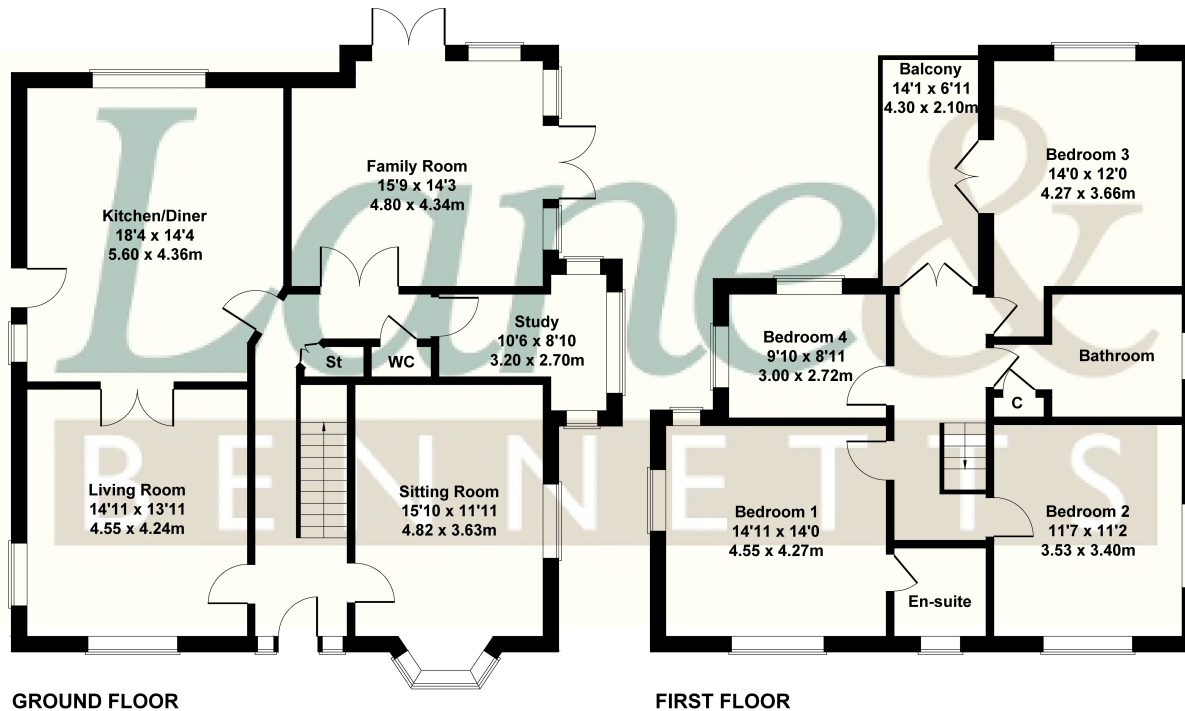
The extended property is superbly presented throughout, with a high standard of fixture & fittings. Briefly, there are four double bedrooms, two bathrooms, three receptions and a fabulous open plan fitted kitchen & dining area. The South facing landscaped garden easy maintain boasts a raised decking area for Al fresco entertaining. A first floor balcony overlooks this impressive rear garden, and there is good storage space within the property, and ample parking to the front.

Communications are provided with BT broadband & telephone, while Sky is also available at the property. Your council tax band will be band G. The EPC Band is D. The property is FREEHOLD and is available CHAIN FREE!



## 101 Pixmore Way

Approximate Gross Internal Area  
2002 sq ft - 186 sq m



Not to Scale. Produced by The Plan Portal 2023  
For Illustrative Purposes Only.

- EARLY GARDEN CITY CHARACTER HOME IN A SUPERB LOCATION
- CHAIN FREE - AVAILABLE TO VIEW NOW
- EXTENDED SPACIOUS ACCOMMODATION
- MINUTES FROM TOWN, STATION,, PRIVATE SCHOOLS & GOLF CLUB
- LANDSCAPED GARDENS
- AMPLE OFF ROAD PARKING
- THREE RECEPTION ROOMS
- FOUR DOUBLE BEDROOMS
- TWO BATHROOMS
- TANDEM GARAGE
- PERIOD FEATURES AND WELL APPOINTED ROOMS

