



BRITISH
PROPERTY
AWARDS

2017 - 2019
★★★★★

GOLD WINNER

ESTATE AGENT
IN GL17-20

Town Centre

01684 293246

**Engall
Castle**

.com

4 Cotswold Cottages, Barton Street, Tewkesbury, GL20 5GH

This is a beautifully presented, modern, contemporary styled town centre cottage.

Tucked away in the centre of the town and with the advantage of a decked private courtyard, this delightful cottage is a modern build that has been built using old bricks to sympathetically reflect the neighbourhood.

Inside as you enter you will get the wow factor, of the modern beautifully presented open plan living accommodation.

The kitchen area has a range of modern wall and base units with open counter tops creating a useful breakfast bar area and divide between the living space. On the ground floor there is also a useful downstairs wc with plumbing for a washing machine.

Moving to the first floor the stairs open up into a large dual aspect double bedroom with dressing area and door through to the shower room.



At the front of the property there is a lovely decked courtyard area and space at the side of the property with lean to and somewhere to store bins . Tucked away off the main street it is discreetly positioned and unless invited to visit you just wouldn't know it was there.

Tewkesbury is a popular Tudor Abbey town with a wealth of leisure, health, and education facilities including hospital, theatre, swimming pool and sports centre and as this property is located within the centre all these facilities are within easy walking distance.

Centrally situated between Cheltenham, Worcester, Gloucester and Evesham it is an excellent commuting base, with Birmingham and other major cities made easy with the motorway and rail networks readily accessible.

Ground Floor

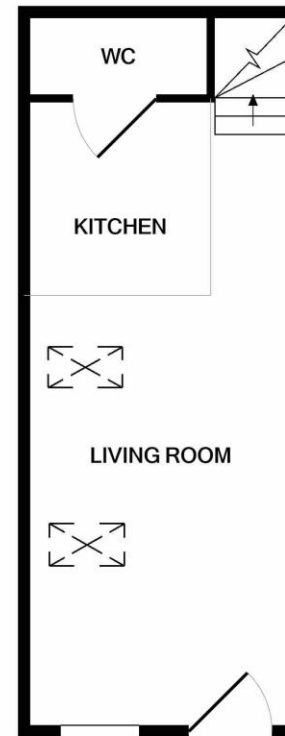
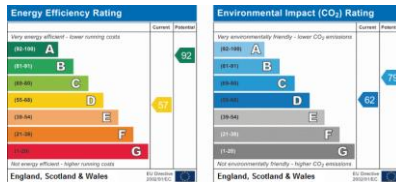
Open Plan Living Accommodation 25'11" x 11'
Downstairs wc

First Floor

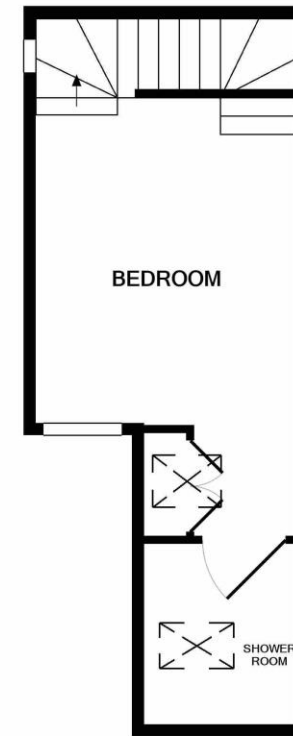
Bedroom 1 16'3" x 11'
Bathroom 6'8" x 6'2"

Outside
Courtyard

Tewkesbury Borough Council Tax Band B



GROUND FLOOR



1ST FLOOR



Guide Price £165,000

Viewing strictly by arrangement with Engall Castle Ltd

155 High Street Tewkesbury Gloucestershire GL20 5JP

Office hours: Mon – Fri 9am to 6pm, Sat 9am to 4pm

email: sales@engallcastle.com

01684 293 246

www.engallcastle.com



This floorplan is provided for guidance only as an approximate layout of the property and should not be relied upon as a statement of fact.

Agents Note

These property details are set out as a general outline only and do not constitute any part of an Offer or Contract. Any services equipment, fittings or central heating systems have not been tested and no warranty is given or implied by Engall Castle Ltd that these are in working order. Buyers are advised to obtain verification from their solicitor or surveyor. Fixtures and fittings or other items are not included unless specifically described. All measurements, distances and areas are approximate and for guidance only and should not be relied upon for the purposes of fitting carpets or furniture etc. These property details and all statements within this document are provided without responsibility on behalf of Engall Castle Ltd or its employees or representatives and should not be relied on as statements of fact. Prospective purchasers must satisfy themselves as to the accuracy of all details pertaining to the property.

