



Raebarn Gardens, Arkley, EN5

£1,875,000



Raebarn Gardens, Arkley, EN5

Quietly located within a Cul-de-sac of just 20 houses is this hugely impressive 6 double bedroom detached family home offering 4,291 Sq Ft (398 Sq M) of internal space and off street parking for 3/4 cars.

This immaculately presented house has been thoughtfully designed in order to create the perfect family home, with a stunning kitchen/reception area found on the ground floor level which offers direct access to a well designed 126ft rear garden along. An additional reception room, study, contemporary bathroom and a utility room can also be found on this level. The first floor offers four double bedrooms and three bathrooms, with a further generous bedroom and bathroom located on the second floor.

Additional benefits include an outstanding cinema room on the lower level, a garage and a garden annex which includes a kitchen and bathroom. Solar panels have been installed for energy efficiency purposes.

Features

- Located Within A Cul-De-Sac
- 6 Double Bedrooms
- 6 Bathrooms
- Detached Family Home
- Outstanding Cinema Room
- Garden Annex With Kitchen & Bathroom
- Thoughtfully Designed Throughout
- Off Street Parking for 3/4 Cars
- 4,291 Sq Ft (398 Sq M) Of Internal Space

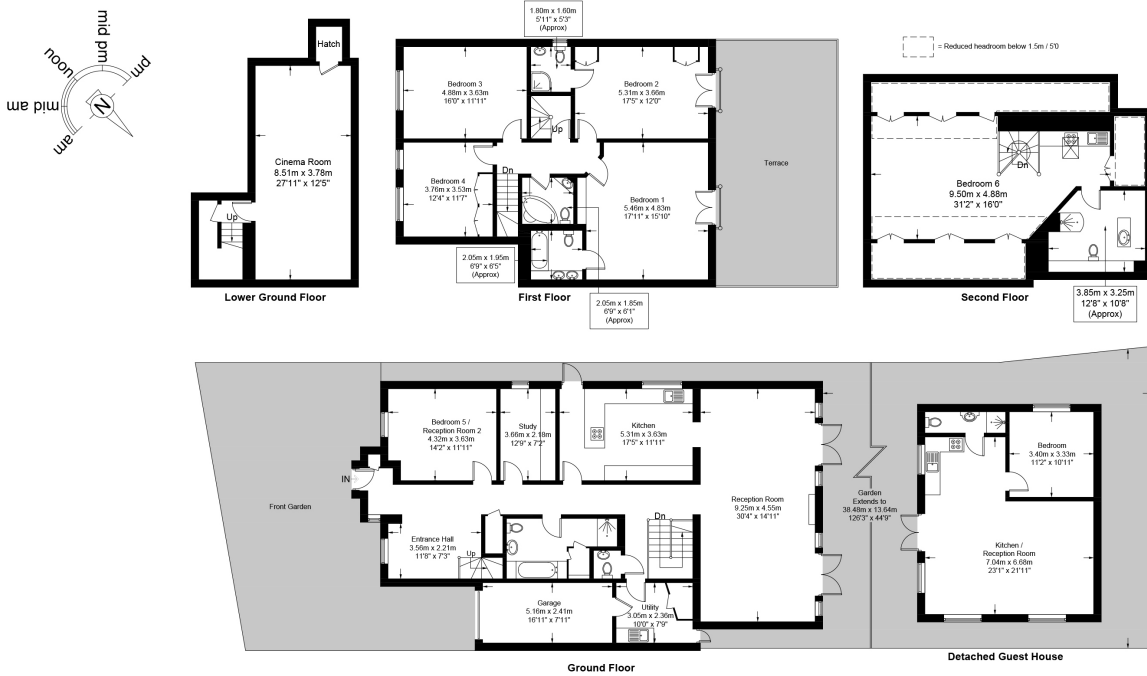


Raebarn Gardens, Arkley, EN5

Raebarn Gardens, EN5

Approximate Gross Internal Area = 4291 sq ft / 398.6 sq m

Restricted Height = 387 sq ft / 36.0 sq m



PRIME | PERSPECTIVES

This plan is for general guidance only and is not drawn to scale unless stated. All dimensions, including windows, doors, and the Total Gross Internal Area (GIA), are approximate. For precise measurements, please consult a qualified architect or surveyor before making any decisions based on this plan.

