



CHI

APARTMENT D
KINGSBRIDGE • TQ7 1AB

93 FORE STREET

FIRST FLOOR

Entrance Hallway | Open Plan Kitchen/Living/Dining Room |
Bedroom 1 With En-Suite Shower Room | Bedroom 2 | Bathroom

EXTERNAL

Allocated Parking Space



“ A newly renovated 2 bedroom apartment with parking”...

Welcome to Apartment D a beautifully presented two-bedroom home situated within one of Kingsbridge's most iconic and historic buildings, recently renovated to an exceptional standard.

- Stylish two-bedroom apartment in a historic, recently renovated building.
- Bright open-plan kitchen, living, and dining area with double-aspect windows.
- Spacious principal bedroom with ensuite shower room.
- 1 out of 12 apartments
- Allocated parking space

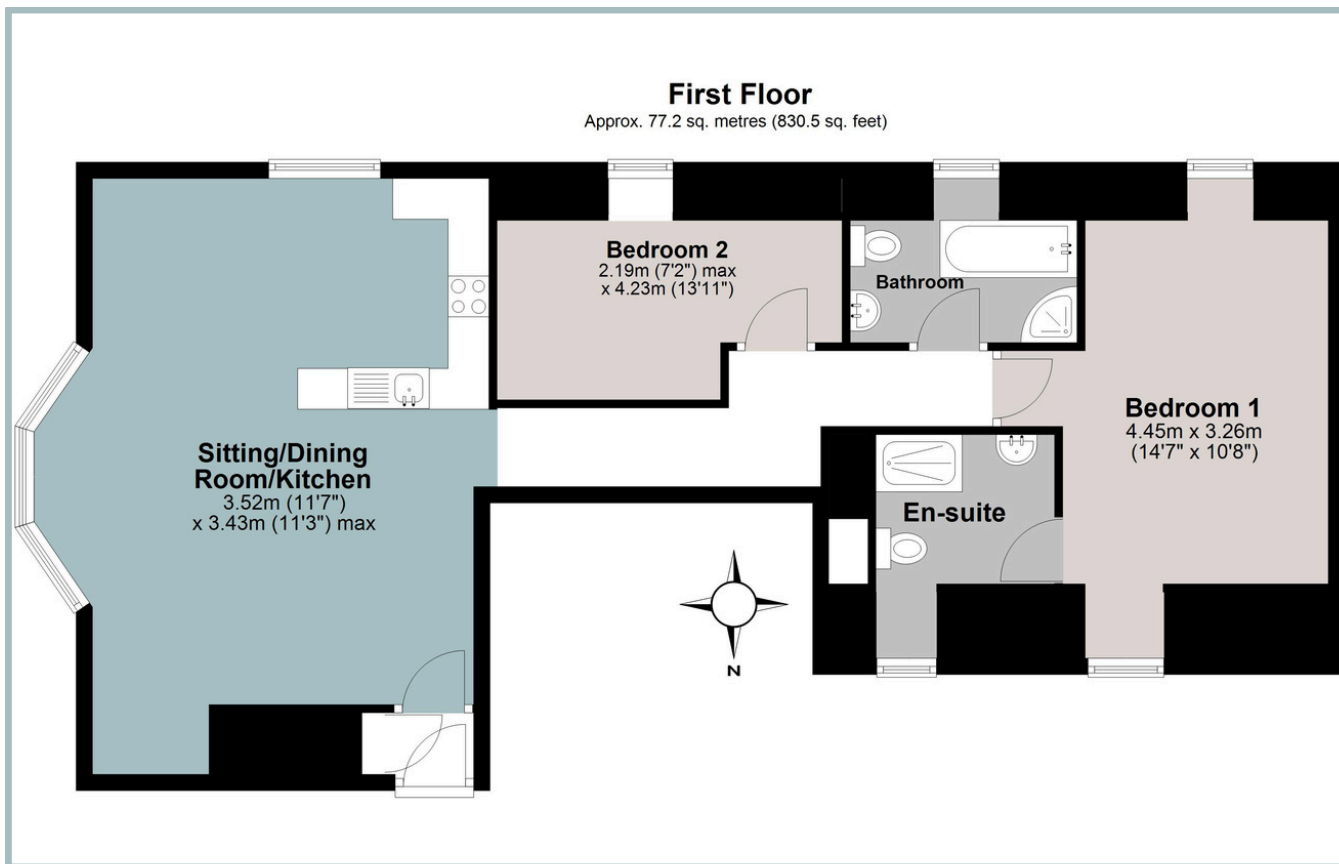
As you step through the front door, you are greeted by a bright and spacious open-plan kitchen, living, and dining area, designed for modern living. The room benefits from double-aspect windows, flooding the space with natural light and offering a lovely sense of openness. The fully fitted kitchen features contemporary wall and floor units, providing ample storage and a sleek, stylish finish. Moving through the apartment, you'll find the generous principal bedroom, which enjoys plenty of natural light and boasts its own private ensuite shower room for added convenience.

Bedroom two is also well-proportioned, ideal as a guest room or home office. The main bathroom is thoughtfully designed with both a separate shower and a full-size bath, offering comfort and flexibility.

This apartment forms part of a sensitive renovation project in the heart of Kingsbridge, blending historic character with modern luxury.



TOTAL APPROXIMATE AREA: 77.2 SQ M 830.5 SQ FT



IMPORTANT NOTICE: We would like to inform prospective purchasers that these sales particulars have been prepared as a general guide only. They are prepared and issued in good faith and are intended to give a fair description of the property, but do not constitute part of an offer or contract. Any description or information given should not be relied on as a statement or representation of fact that the property or its services are in good condition. Neither Charles Head, nor any of its employees, has any authority to make or give any representation or warranty whatsoever in relation to the property. Floorplans are for guidance purposes only and may not be to scale. The photographs show only certain parts and aspects of the property at the time they were taken. Any reference to alterations to, or use of, any part of the property is not a statement that any regulations or other consent has been obtained. . If there are any important matters likely to affect your decision to buy, please contact us before viewing the property. ALL STATEMENTS CONTAINED IN THESE PARTICULARS AS TO THIS PROPERTY ARE MADE WITHOUT RESPONSIBILITY ON THE PART OF CHARLES HEAD.



113 FORE ST, KINGSBRIDGE TQ7 1BG
kingsbridge@charleshead.co.uk
01548 852 352
www.charleshead.co.uk

Tenure: Leasehold of a remainder of 999 years

Council Tax Band: TBC

Local Authority: South Hams District Council

Services: Mains Electricity, Water And Drainage. Electric Heating and Mega Flo

Service Fee: TBC

Notes: Grade II Listed

EPC: E (50) potential C (79)

Viewings: Very strictly by appointment only

Location: Kingsbridge is a sought-after market town nestled at the estuary head in the beautiful South Hams, a designated Area of Outstanding Natural Beauty. You'll find an array of independent shops, renowned dining experiences and cosy local pubs. The town amenities include two supermarkets, petrol station, cinema, leisure centre, medical facilities, community hospital and excellent schools.

Kingsbridge Community College is one of the top-rated secondary schools in the UK. The estuary offers boat moorings and water sport activities, while public transport and well-connected road links lead to nearby Dartmouth, Salcombe and Totnes. With an abundance of pristine beaches, hidden coves and breathtaking walks on the doorstep.

Directions: 93 Fore Street is located at the higher end of Fore Street on the right hand side just after the clock tower on the opposite side of the street.

What Three Words:///dizziness.silly.collected

Salcombe 6.8 miles - Totnes 13.1 miles (Railway link to London Paddington) - Dartmouth 14.5 miles