



**30 Havenfield, Arbury Road, Cambridge,
CB4 2JY**

£100,000 Leasehold

- Retirement property
- Secure entrance
- Immaculate gardens
- Communal Lounge
- Chain free
- Ideal Cambridge location
- Friendly atmosphere
- Low Maintenance
- EPC Rating C





****CHAIN FREE RETIREMENT PROPERTY IN CENTRAL CAMBRIDGE**** With a secure entrance, pristine gardens and amazing optional facilities this retirement apartment is the ideal spot to relax and still be close to friends & family in Cambridge.

This is a light one bedroom apartment with everything you may need to start your retirement life. A lounge, bedroom, bathroom & kitchen offer a perfectly easy living apartment.

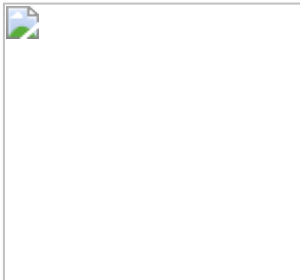
A comfortable spacious communal lounge adjacent to the main entrance with large windows is a great space to relax with your neighbours or visitors.

The library room offers a vast selection of books and puzzles to help enjoy relaxing afternoons and a kitchen facility is in place to ensure you can make a hot drink without returning to your own apartment.

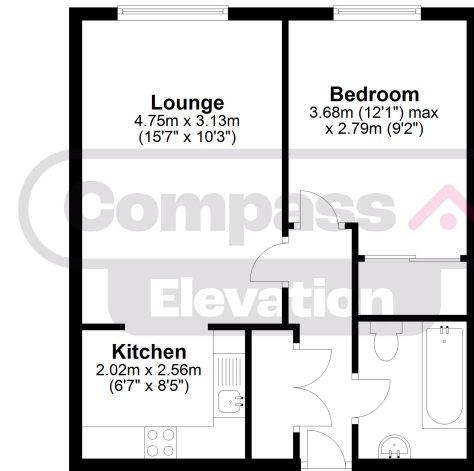
This is a fantastic opportunity to own a home amongst a community while still having the privacy of your own home. For peace of mind for you or your loved ones, this apartment is secure, safe, warm and friendly ensuring you may live independently and enjoy your free time.

Disclaimer

Whilst we have endeavoured to prepare our sales particulars accurately none of the services, appliances or equipment have been tested. A buyer should satisfy themselves on such matters prior to purchase. Any measurements or distances mentioned in these particulars are for guide reference only. If such particulars are fundamental to a purchase, buyers should rely on their own enquiries. All enquiries should be directed to Elevation Estate Agents in the first instance.



First Floor



This floor plan along with the dimensions are for guidance only and should not be used for carpet sizes, appliances or items of furniture. Plan produced using PlanUp
Plan produced using PlanUp.