

# FOR SALE

Ingersoll Road,  
Shepherd's Bush, W12

Terraced House  
West London

£1,500,000 fh

5  3  2 



**horton  
and garton**

SALES / LETTINGS / PROPERTY MANAGEMENT

hortonandgarton.co.uk | Sales 020 8819 0510 | Lettings 020 8819 0511  
172 King Street, Hammersmith, W6 0QU



# FOR SALE

Ingersoll Road,  
Shepherd's Bush, W12

Terraced House  
West London

£1,500,000 fh

5  3  2 



**horton  
and garton**

SALES / LETTINGS / PROPERTY MANAGEMENT

[hortonandgarton.co.uk](https://hortonandgarton.co.uk) | Sales 020 8819 0510 | Lettings 020 8819 0511

172 King Street, Hammersmith, W6 0QU



# FOR SALE

Ingersoll Road,  
Shepherd's Bush, W12

Terraced House  
West London

£1,500,000 fh

5  3  2 



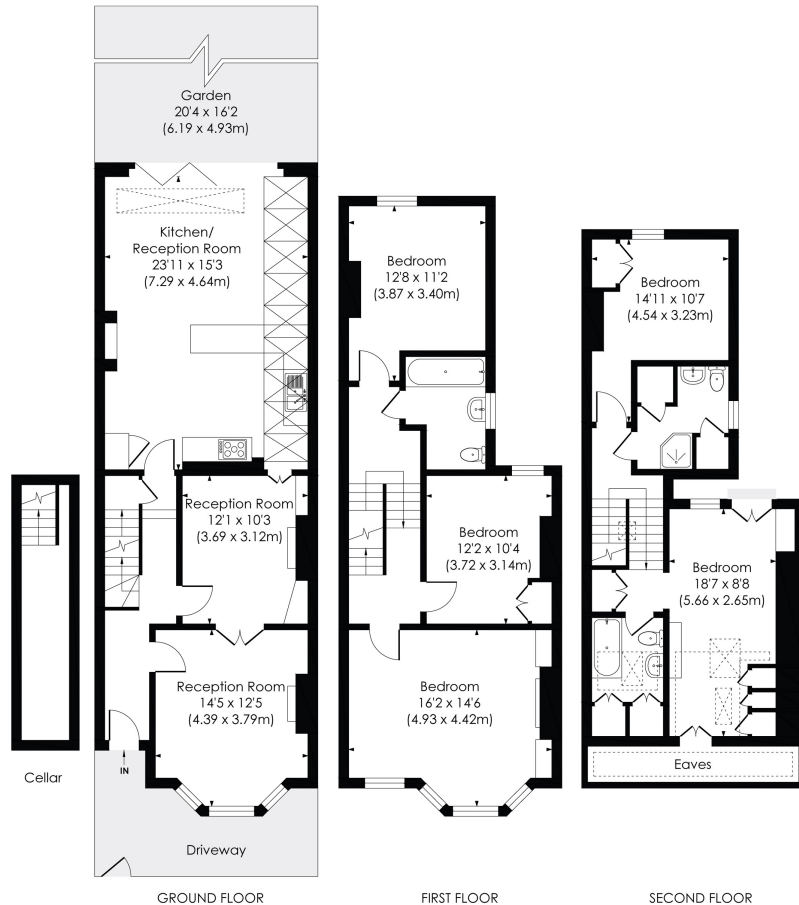
**horton  
andgarton**

SALES / LETTINGS / PROPERTY MANAGEMENT

[hortonandgarton.co.uk](https://hortonandgarton.co.uk) | Sales 020 8819 0510 | Lettings 020 8819 0511

172 King Street, Hammersmith, W6 0QU





## INGERSOLL ROAD, W12

Approx. Gross Internal Floor Area

**2022 Sq' / 187.83 SqM** (Including Reduced Height and Cellar)

**1894 Sq' / 175.92 SqM** (Excluding Reduced Height, Including Cellar)

**horton  
andgarton**

© Pixangle Property Marketing Ltd. info@pixangle.com Tel: 0208 870 2118

This floor plan has been prepared for the purpose of illustration only in accordance with the latest RICS code of measuring practice and is not to scale. All measurements and areas are approximate and whilst every effort has been made to ensure the accuracy of the plan contained here, no responsibility is taken for any error, omission or misstatement.



Victorian terrace house | Five bedrooms - Three  
bathrooms | 1894 Sq' - 175.92 SqM | Fully extended  
versatile family home | EPC rating D | Shepherd's Bush



hortonandgarton.co.uk

Sales 020 8819 0510

Lettings 020 8819 0511

172 King Street, Hammersmith, W6 0QU