



375 Hitchin Road, Luton, Bedfordshire, LU2 7SP

Guide Price £300,000 Freehold







FABRICA  
Organic products  
SPECIALTY STORE

FLEURS  
GRAINES  
PLANTES

KRUP

# Step Inside

Hitchin Road

---



# About Luton

Hitchin Road

---

Double glazed door to front aspect. Doors to both reception rooms. Large storage cupboard. Wooden flooring.





# Step Outside

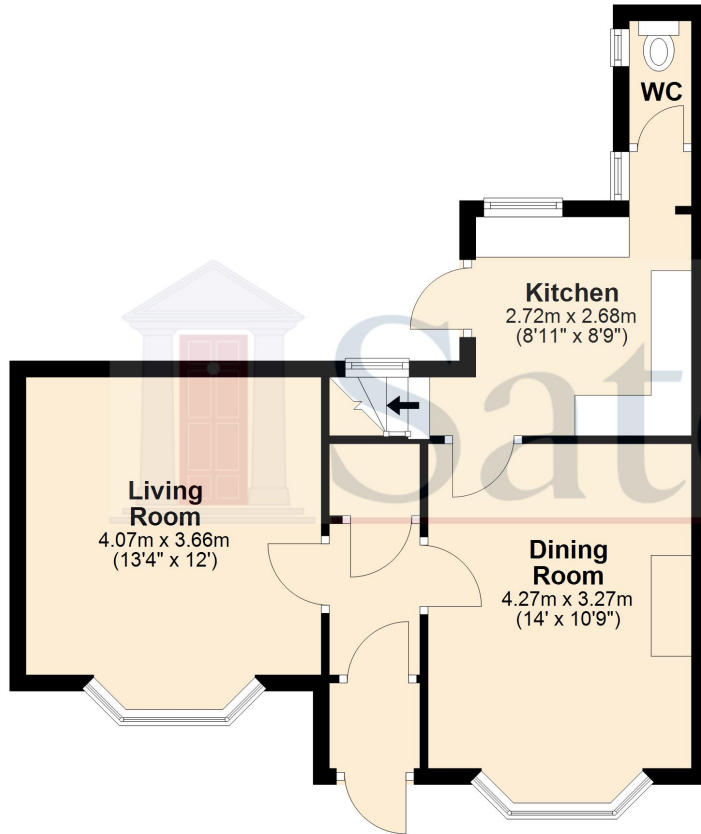
## Hitchin Road

---

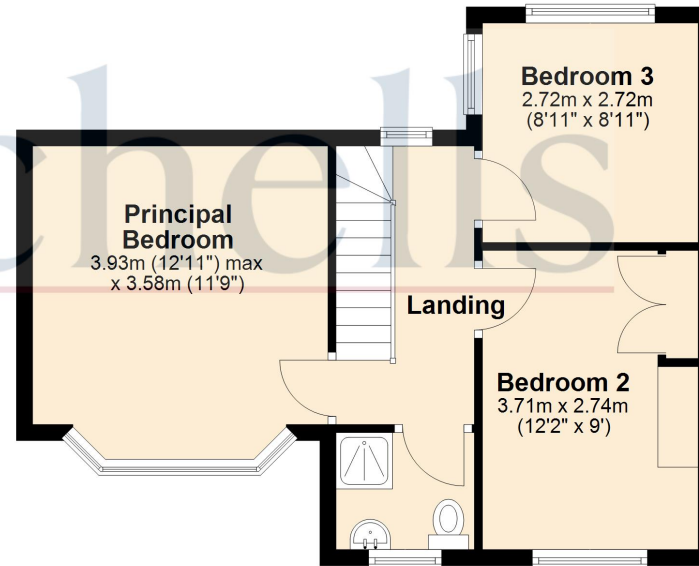
Abt. 13' 4" x 12' 0" (4.06m x 3.66m) A bright space with feature fireplace and double glazed bay window to the front. Two radiators. Carpet as fitted.

---

## Ground Floor



## First Floor



Total area: approx. 81.3 sq. metres (874.9 sq. feet)

For illustrative purposes only - NOT TO SCALE - Measurements shown are approximate.  
The size and position of doors, windows, appliances and other features are approximate.

Plan produced using PlanUp.

Satchells  
7, Brand Street, Hitchin, Hertfordshire, SG5 1HX  
Tel: 01462 413163  
E: [hitchin@satchells.co.uk](mailto:hitchin@satchells.co.uk) [www.satchells.com](http://www.satchells.com)

