

FOR SALE

£549,950

Horsenden Lane South, Perivale, Greenford, Greater London. UB6



Peter Gamble & Co. offer to the market for CHAIN FREE SALE this large 3 BEDROOM freehold home.

Situated just moments from Perivale tube station this property benefits from one of the largest original footprints including wider rooms and higher ceilings when compared to other local properties. Views over Perivale sports fields.

The property is currently in its original layout with 2 separate reception rooms and separate kitchen.

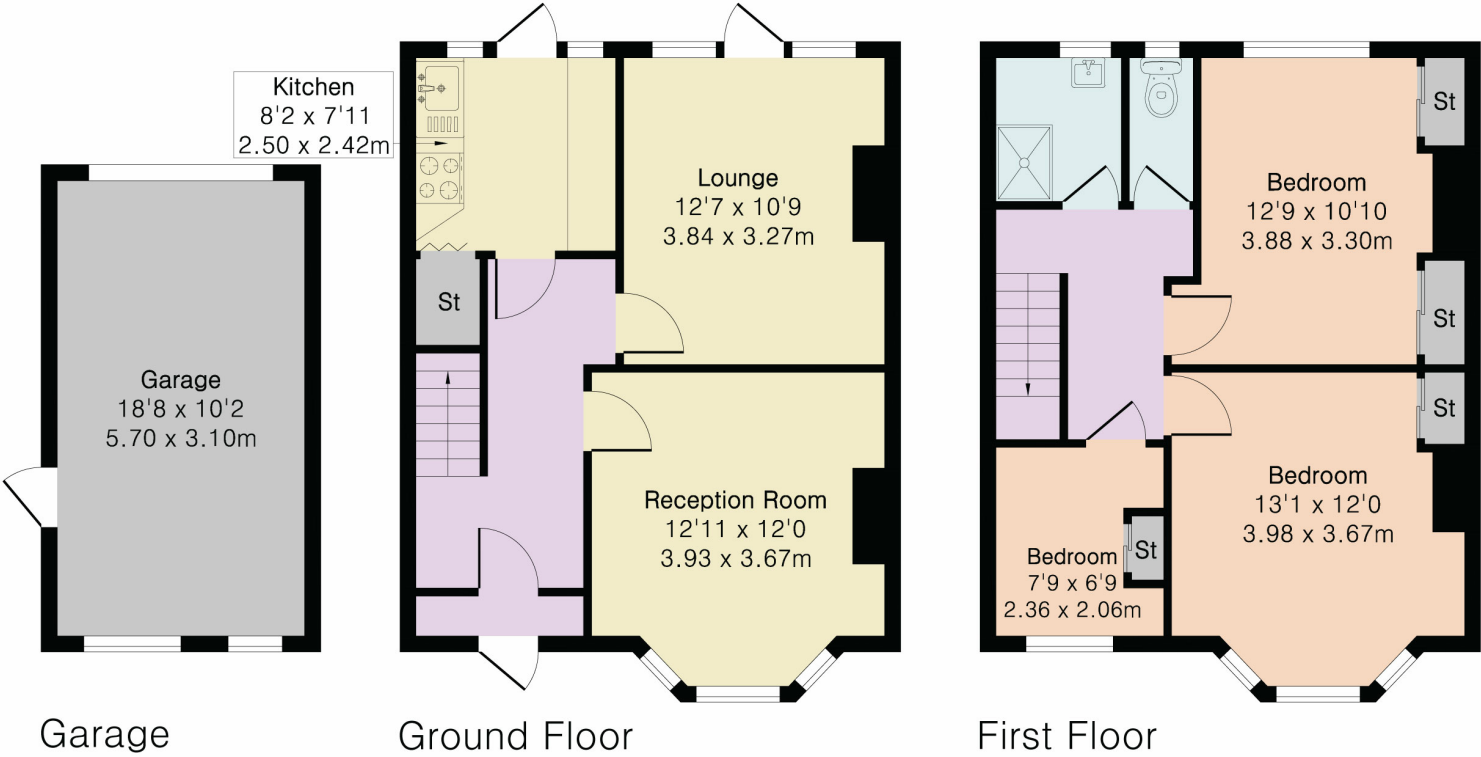
3 bedrooms and family bathroom to the first floor with separate w/c.





Approximate Gross Internal Area 940 sq ft - 88 sq m
(Excluding Garage)

Ground Floor Area 470 sq ft – 44 sq m
First Floor Area 470 sq ft – 44 sq m
Garage Area 190 sq ft – 18 sq m



Floor plan produced in accordance with RICS Property Measurement 2nd Edition. Although Pink Plan Ltd ensures the highest level of accuracy, measurements of doors, windows and rooms are approximate and no responsibility is taken for error, omission or misstatement. These plans are for representation purposes only and no guarantee is given on the total square footage of the property within this plan. The figure icon is for initial guidance only and should not be relied on as a basis of valuation.

