

01992641500

www.christopherstokes.co.uk

10 Newnham Parade College Road Hertfordshire, EN8 9

christopher  
stokes



christopher  
stokes

## Fishers Close, Waltham Cross, Hertfordshire EN8

**£360,000 Freehold**

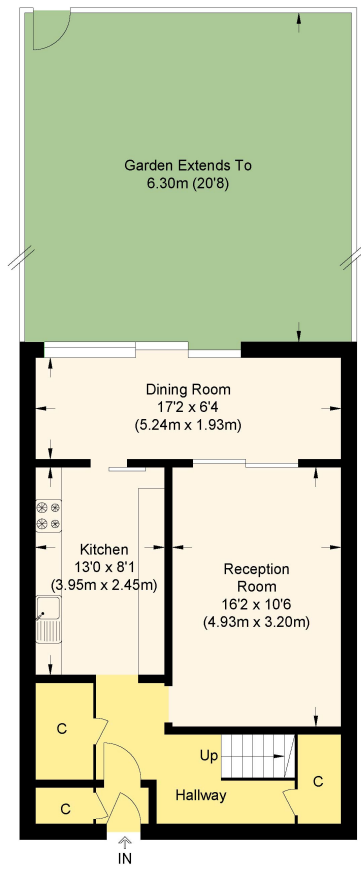
- Modern interior
- Close to Lee Valley Country Park
- Parking to rear
- Close to local shops and amenities
- Newly decorated
- Two double bedrooms

Presenting this two bedroom, extremely spacious terraced house. It has a recently decorated kitchen, bathroom, with new electrics & double glazed windows. There is allocated parking at the rear of the property. Located in Waltham Cross and within walking distance to the station, easy each of local shops, schools and amenities, including Lee Valley Park.

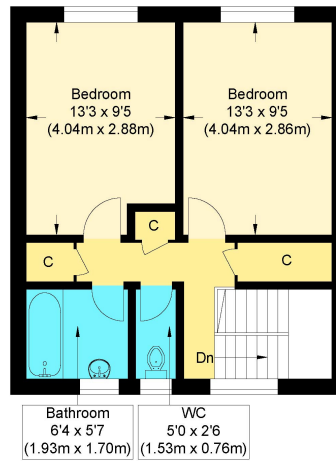




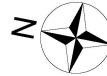
These particulars, whilst believed to be accurate are set out as a general outline only for guidance and do not constitute any part of an offer or contract. Intending purchasers should not rely on them as statements or representation of fact, but must satisfy themselves by inspection or otherwise as to their accuracy. We have not carried out a detailed survey nor tested the services, appliances and specific fittings. Room sizes should not be relied upon for carpets and furnishings. The measurements given are approximate. No person in this firm's employment has the authority to make or give any representation or warranty in respect of the property.



**Ground Floor**



**First Floor**



**Fishers Close**

Approximate Gross Internal Floor Area : 90.7 sq m / 976.28 sq ft

Illustration for identification purposes only, measurements are approximate, not to scale.

