

## Holly Court, Greenwich, London, SE10 0BL

£1,550 PCM

A spacious two bedroomed featuring impressive views across the beautiful private courtyard. The property further comprises a fully fitted kitchen, open plan reception, balcony, two generous double bedrooms and bathroom. The apartment is located ideal for excellent transport links and includes 24 hour concierge.

- Private Balcony
- Communal Garden
- 24 Hour Concierge
- 

Viewing by appointment with 1st avenue.

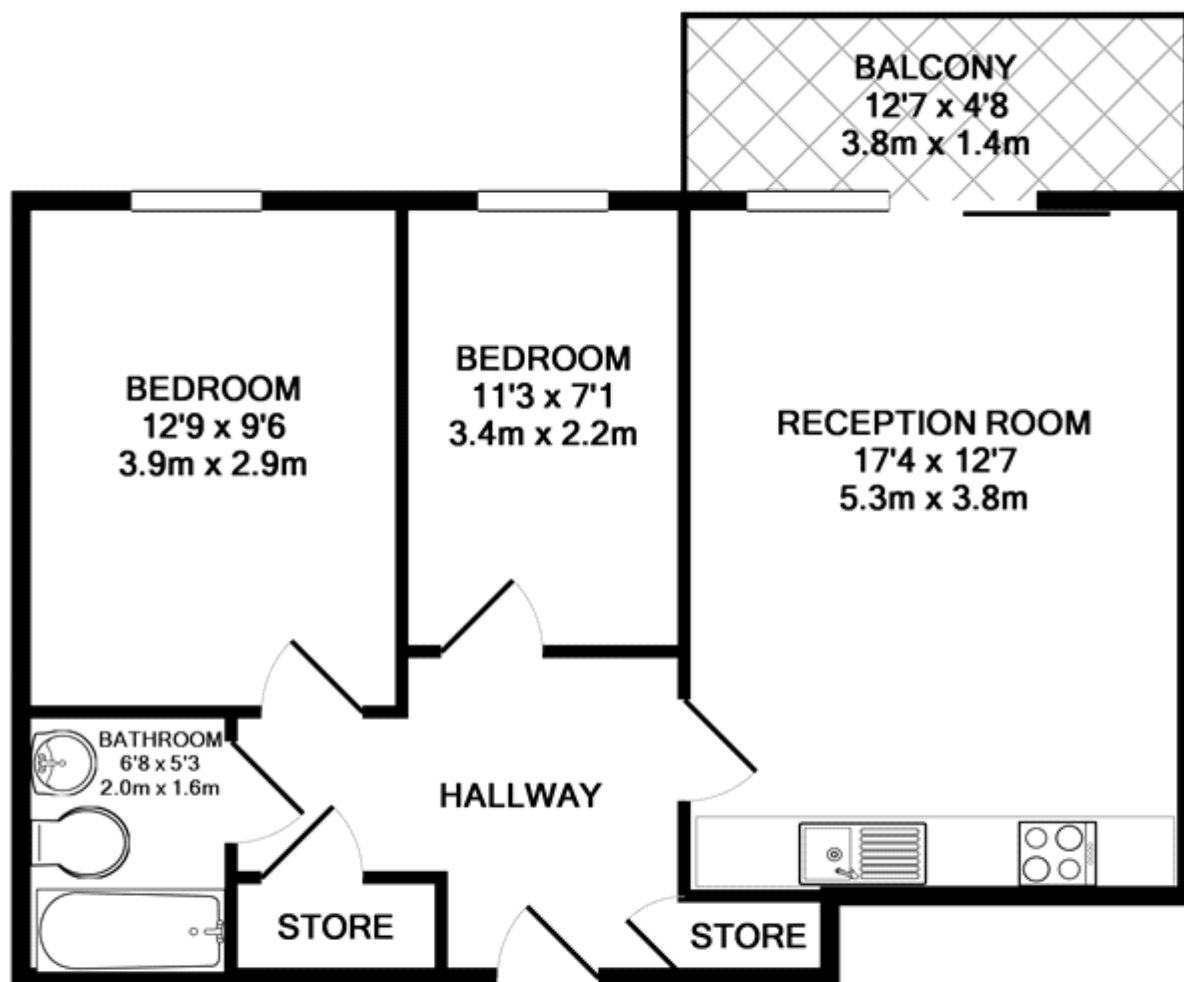
**Call: 020 8293 8600**

1st avenue, 128 Metcalfe Court, West Parkside, London SE10 0EL  
email: [info@1stavenue.co.uk](mailto:info@1stavenue.co.uk)

# Holly Court, Greenwich, London, SE10 0BL

£1,550 PCM

**1stavenue**  
Real Estate Services



TOTAL APPROX. FLOOR AREA 547 SQ.FT. (50.8 SQ.M.)

Whilst every attempt has been made to ensure the accuracy of the floor plan contained here, measurements of doors, windows, rooms and any other items are approximate and no responsibility is taken for any error, omission, or mis-statement. This plan is for illustrative purposes only and should be used as such by any prospective purchaser. The services, systems and appliances shown have not been tested and no guarantee as to their operability or efficiency can be given

Made with Metropix ©2016

Viewing by appointment with 1st avenue.

**Call: 020 8293 8600**

1st avenue, 128 Metcalfe Court, West Parkside, London SE10 0EL  
email: [info@1stavenue.co.uk](mailto:info@1stavenue.co.uk)

**1stavenue**  
Real Estate Services