



Nestled within a quiet cul-de-sac on a 2004 Kings Oak Homes development, this two bedroom starter home sits a short walk from Langley Grammar School and is offered to the market with no onward chain.

The property has been newly renovated and redecorated, ideal for those looking for an immediate move. The ground floor of the property features an open plan living room/diner, kitchen with garden access and a downstairs cloakroom, whilst both double bedrooms on the first floor benefit from en-suites.

There are two residents parking spaces at the front of the house and a private rear garden.

The property is offered to the market in a very good condition throughout and would make a fantastic purchase for first time buyers and investors alike due to the idyllic location near multiple local schools.



Property Information

-  TWO BEDROOM TERRACED HOUSE
-  OPEN PLAN LIVING ROOM / DINER
-  NEWLY RENOVATED AND REDECORATED
-  PERFECT FOR FIRST TIME BUYERS OR INVESTORS
-  QUIET CUL-DE-SAC
-  CLOSE TO LANGLEY GRAMMAR SCHOOL
-  DOWNSTAIRS CLOAKROOM
-  DOUBLE BEDROOMS BOTH WITH EN-SUITES
-  RESIDENTS PARKING TO THE FRONT
-  NO CHAIN

  
**x2**  
Bedrooms

  
**x1**  
Reception Rooms

  
**x3**  
Bathrooms

  
**x2**  
Parking Spaces

  
**Y**  
Garden

  
**N**  
Garage

Transport Links

NEAREST STATIONS

- Langley - 1 mile away
- Datchet - 1.4 miles away
- Slough - 1.7 miles away

The property is situated very close to London Road (A4) a short distance to J5 of M4 and easy access to Heathrow airport

Rental Return

We propose the property would achieve approximately £1700 per calendar month.

Local Schools

PRIMARY SCHOOLS:

Holy Family Catholic Primary School  
0.2 miles away

Foxborough Primary School  
0.5 miles away

Marish Primary School  
0.6 miles away

Castleview Primary School  
1.0 miles away

SECONDARY SCHOOLS

Langley Grammar School  
0.4 miles away

The Langley Academy  
0.9 miles away

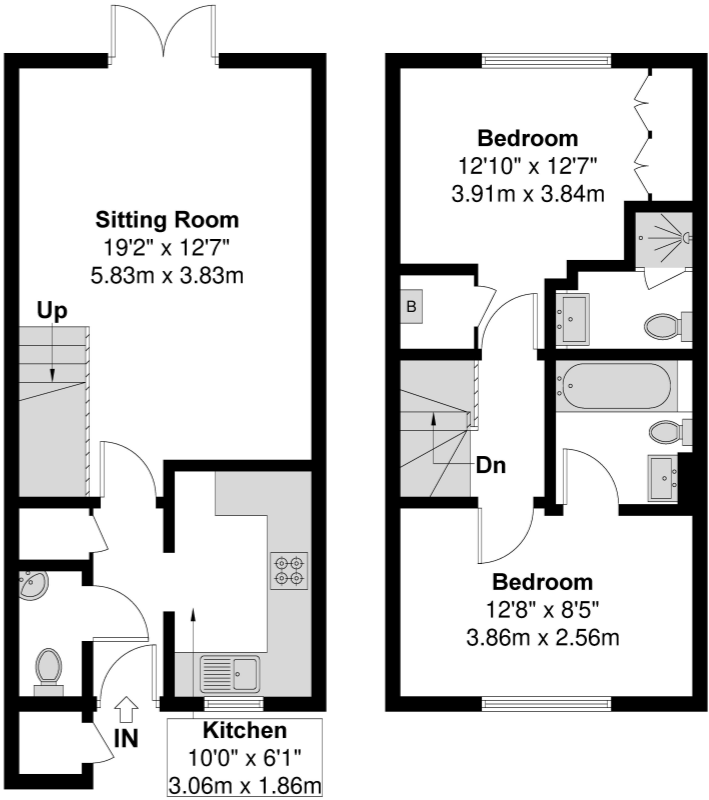
St Bernard's Catholic Grammar School  
1.6 miles away

**Council Tax**  
Band D

Floor Plan



**Bessemer Close**  
Approximate Floor Area = 68.05 Square meters / 732.48 Square feet



**Ground Floor**  
**First Floor**  
Illustration for identification purposes only, measurements are approximate, not to scale.

Prospective purchasers should be aware that these sales particulars are intended as a general guide only and room sizes should not be relied upon for carpets or furnishing. We have not carried out any form of survey nor have we tested any appliance or services, mechanical or electrical. All maps are supplied by Goview.co.uk from Ordnance Survey mapping. Care has been taken in the preparation of these sales particulars, which are thought to be materially correct, although their accuracy is not guaranteed and they do not form part of any contract.

