

7 Woodley Road, Orpington, Kent, BR6 9BN

Property Images

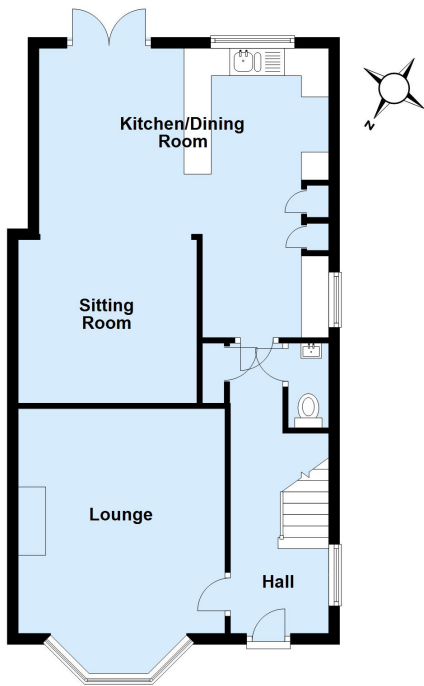






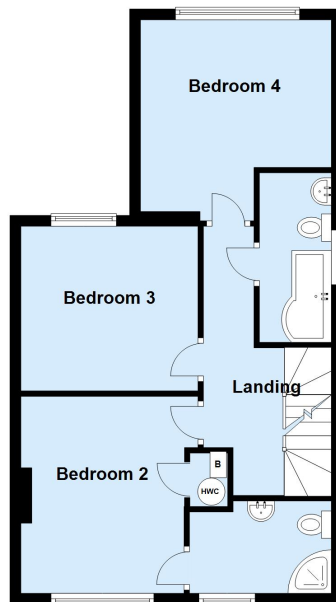
Ground Floor

Approx. 59.9 sq. metres (644.6 sq. feet)



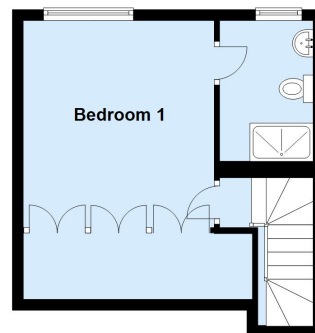
First Floor

Approx. 51.3 sq. metres (552.5 sq. feet)



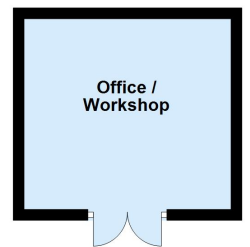
Second Floor

Approx. 27.5 sq. metres (296.4 sq. feet)



Outbuilding

Approx. 13.2 sq. metres (142.1 sq. feet)



Total area: approx. 152.0 sq. metres (1635.6 sq. feet)