

Flat 7 Homenash House, St
Georges Lane North, Barbourne,
Worcester WR1 1RG

This ground floor Retirement Apartment is located in a prestigious and convenient area to the North of Worcester City Centre, close to good transport links and local amenities.

The accommodation includes an Entrance Hall, Sitting/Dining Room, Kitchen, Utility, Double Bedroom, and Bathroom. Additional features include Lift Access, Residential Parking, Beautiful Communal Mature Gardens, Relaxing Lounge Areas, On-Site Manager, Electric Heating, and Double Glazing.

LEASEHOLD

Lease Remaining 88 Years

Annual Ground Rent £440

Annual Service Charge £3,800

Council Tax Band B - Worcester Council






Agents Note

Please note that a Buyers Fee of £950 including VAT is payable at the point of an offer being accepted to Shelton & Lines. For terms and conditions please see Shelton & Lines website under the Sales Tab and "Buyers Info" page.

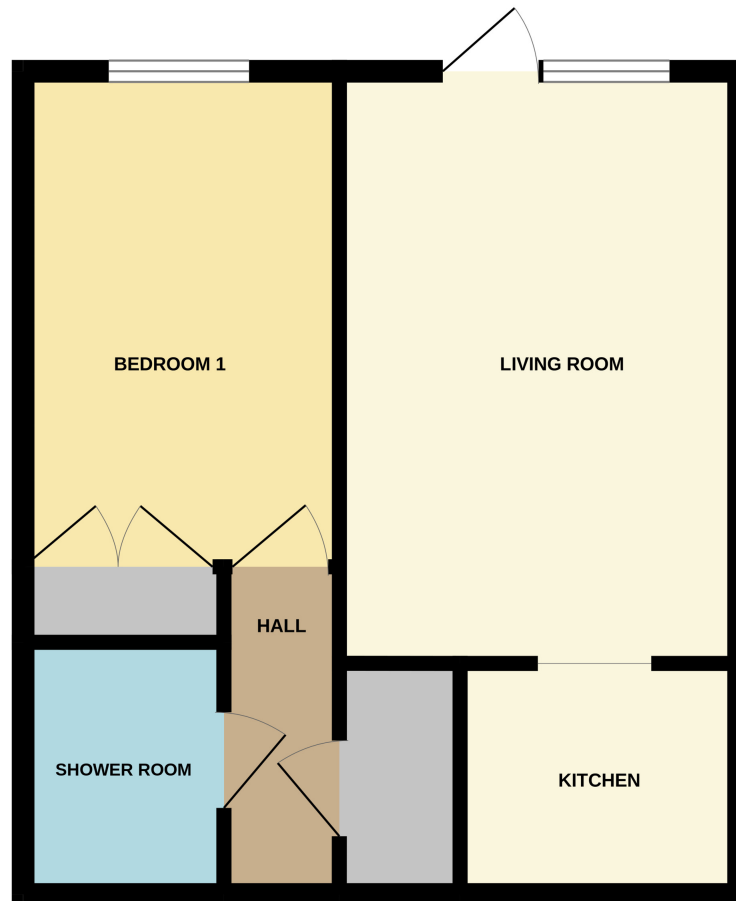


Energy Efficiency Rating		
	Current	Potential
<i>Very energy efficient - lower running costs</i>		
(92+) A		
(81-91) B		81
(69-80) C		
(55-68) D	62	
(39-54) E		
(21-38) F		
(1-20) G		
<i>Not energy efficient - higher running costs</i>		
England, Scotland & Wales	EU Directive 2002/91/EC 	

General Information

Whilst we endeavour to make our sales particulars fair, accurate and reliable, they are only a general guide to the property. Accordingly, if there is any point which is of particular importance to you please contact the office and we will be pleased to check the position for you, especially if you are travelling some distance to view the property. **FIXTURES AND FITTINGS** All items not specifically mentioned within these details are to be excluded from the sale. Any mention of services/appliances within these details does not imply they are in full and efficient working order and no testing has been done by the Agent.

GROUND FLOOR



sheltonandlines.co.uk