



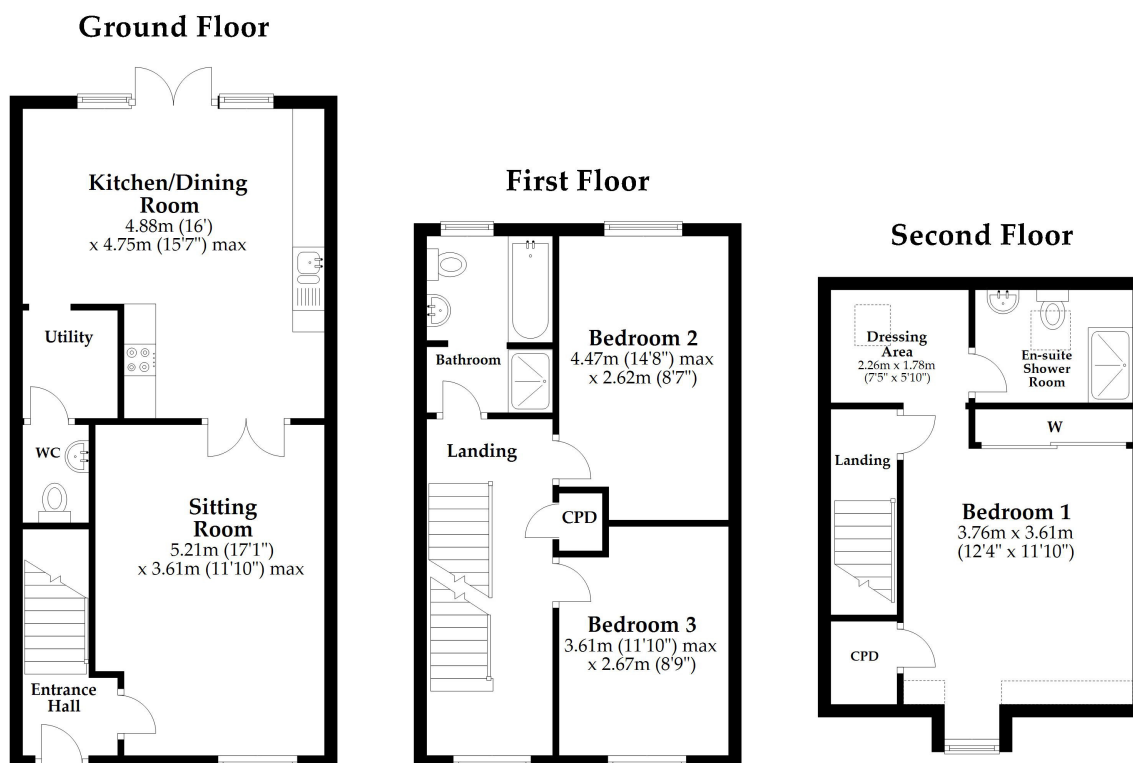
41 Bluebell Crescent

Wimborne, BH21 4FA

£445,000



Note: Measurements were not taken by LJT Surveying and we cannot guarantee their accuracy.



This plan is not to scale and is for general guidance only. LJT Surveying Ltd Ringwood



41 Bluebell Crescent Wimborne, BH21 4FA

A modern and well presented 3 bedroom 2 bathroom semi detached house built in 2020 by Bloor Homes and is situated on a popular residential estate located within easy reach of the Historic town centre of Wimborne. This 3 storey property offers generous sized bedrooms with En-suite, Dressing area and fitted wardrobes to the master bedroom and a family bathroom. To the ground floor there is a spacious Lounge, downstairs cloakroom and separate fully integrated open planned Kitchen/diner. Outside enclosed private gardens with access to a detached single garage and off street parking. **SOLE AGENTS* *NO FORWARD CHAIN***

KEY FEATURES

- 3 GOOD SIZE BEDROOMS
- ENSUITE & FITTED WARDROBES TO MASTER
- OPEN PLANNED KITCHEN/DINER
- SEPARATE LOUNGE
- DETACHED GARAGE AND PARKING



N.B. NONE OF THE APPLIANCES/SERVICES MENTIONED IN THESE DETAILS HAVE BEEN TESTED FOR WORKING CONDITION BY ANTHONYS OF RINGWOOD

Property Ref: 28379896

These particulars are believed to be correct, but their accuracy is not guaranteed and they do not constitute an offer or contract